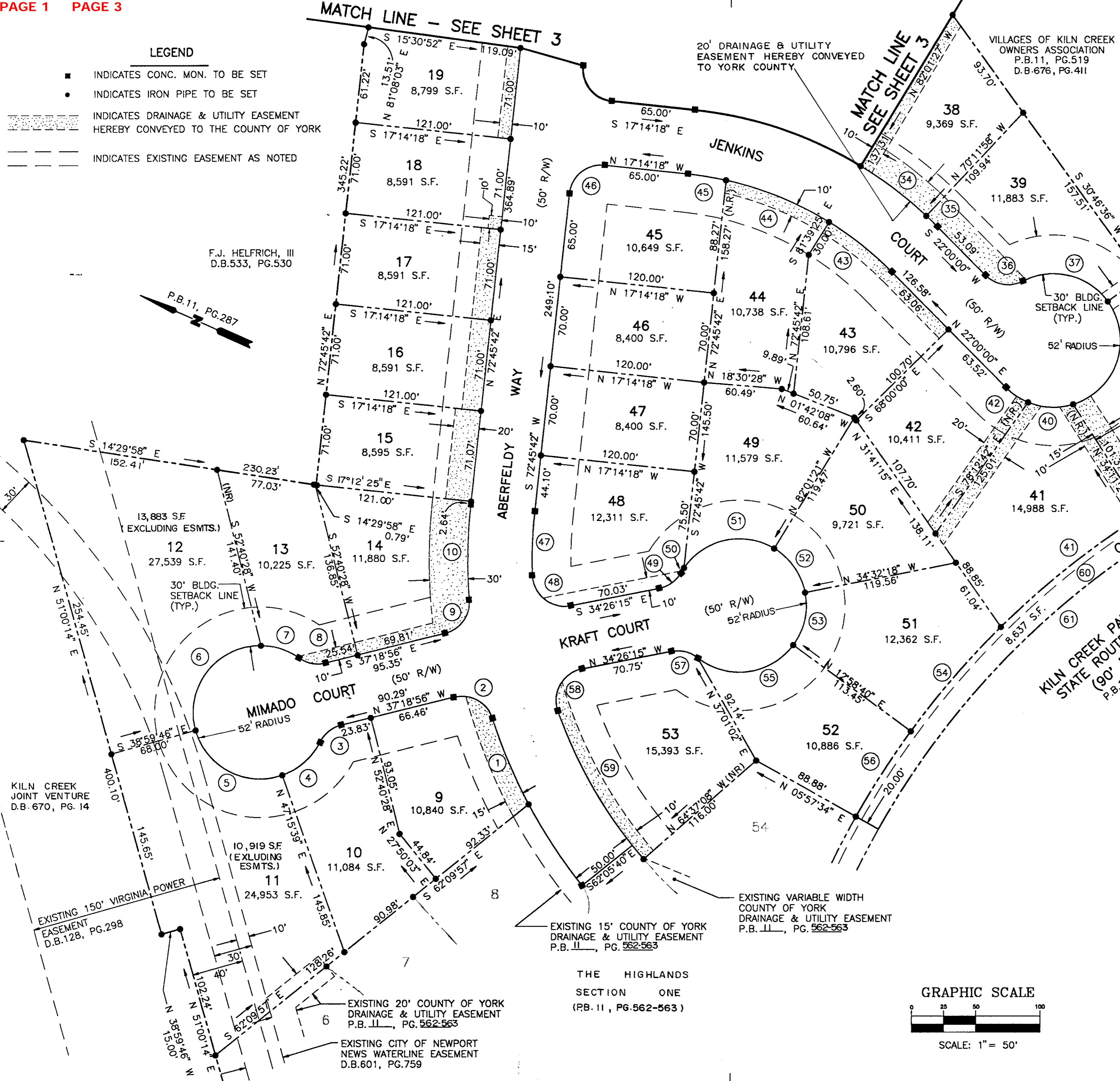


- LEGEND**
- INDICATES CONC. MON. TO BE SET
 - INDICATES IRON PIPE TO BE SET
 - INDICATES DRAINAGE & UTILITY EASEMENT HEREBY CONVEYED TO THE COUNTY OF YORK
 - INDICATES EXISTING EASEMENT AS NOTED

PLAT OF SUBDIVISION
 THE VILLAGES OF KILN CREEK
 SINGLE FAMILY AREA 8
 THE HIGHLANDS
 SECTION TWO
 COUNTY OF YORK, VIRGINIA

DATE: DEC. 2, 1992 SHEET 2 OF 3 SCALE: 1"=50'

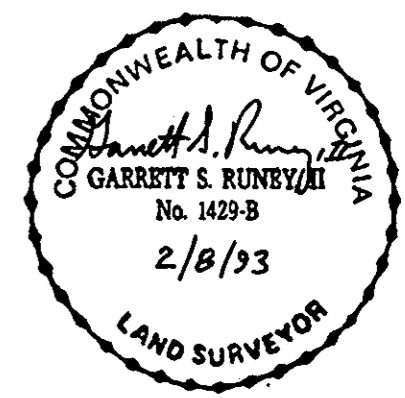
SRA SLEDD, RUNEY & ASSOCIATES, P.C.
 ENGINEERS PLANNERS SURVEYORS
 11832 ROCK LANDING DRIVE, SUITE 203
 NEWPORT NEWS, VIRGINIA 23606
 (804) 873-3386



PROPOSED 15' EASEMENT FOR INGRESS & EGRESS HEREBY CONVEYED TO KILN CREEK OWNERS ASSOCIATION

EXISTING 20' LANDSCAPING, UTILITIES, IRRIGATION, & DRAINAGE EASEMENT RESERVED BY KILN CREEK JOINT VENTURE, SUCCESSOR IN INTEREST TO VILLAGES OF KILN CREEK LIMITED PARTNERSHIP P.B.11, PG.287

EXISTING 15' COUNTY OF YORK DRAINAGE & UTILITY EASEMENT P.B.11, PG.287



APPROVED:
 YORK COUNTY BOARD OF SUPERVISORS

BY: *Mark Dute*
 PAT APPROVING AGENT

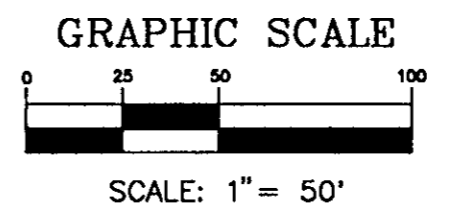
DATE: *March 15, 1993*

STATE OF VIRGINIA
 COUNTY OF YORK

IN THE CLERK'S OFFICE OF THE CIRCUIT COURT FOR THE COUNTY OF YORK, THE 17 DAY OF *March* 1993. THIS MAP WAS PRESENTED AND ADMITTED TO RECORD AS THE LAW DIRECTS IN PLAT BOOK *11*, PAGE *578*.

TESTE: **NANCY B. KANE, CLERK**
 CLERK

BY: *Doraine Bender, D.C.*



THE HIGHLANDS
 SECTION ONE
 (P.B. 11, PG. 562-563)

KILN CREEK JOINT VENTURE
 D.B. 670, PG. 14

EXISTING 150' VIRGINIA POWER EASEMENT
 D.B.128, PG.298

F.J. HELFRICH, III
 D.B.533, PG.530

13,883 S.F. (EXCLUDING ESMTS.)
 27,539 S.F.

10,919 S.F. (EXCLUDING ESMTS.)
 24,953 S.F.

EXISTING 15' COUNTY OF YORK DRAINAGE & UTILITY EASEMENT
 P.B. 11, PG. 562-563

EXISTING VARIABLE WIDTH COUNTY OF YORK DRAINAGE & UTILITY EASEMENT
 P.B. 11, PG. 562-563

EXISTING 20' COUNTY OF YORK DRAINAGE & UTILITY EASEMENT
 P.B. 11, PG. 562-563

EXISTING CITY OF NEWPORT NEWS WATERLINE EASEMENT
 D.B.601, PG.759