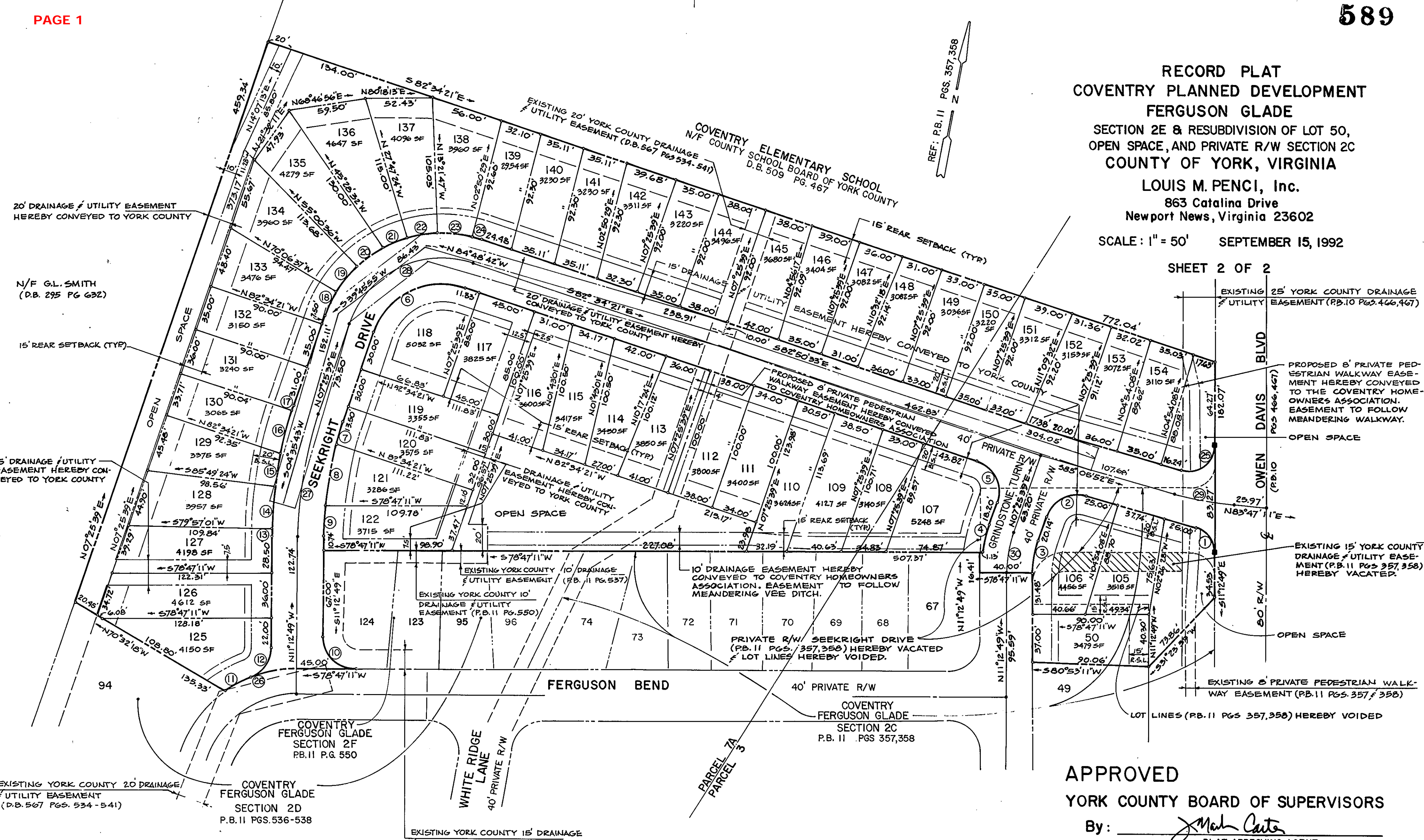


RECORD PLAT
 COVENTRY PLANNED DEVELOPMENT
 FERGUSON GLADE
 SECTION 2E & RESUBDIVISION OF LOT 50,
 OPEN SPACE, AND PRIVATE R/W SECTION 2C
 COUNTY OF YORK, VIRGINIA

LOUIS M. PENCI, Inc.
 863 Catalina Drive
 Newport News, Virginia 23602

SCALE: 1" = 50' SEPTEMBER 15, 1992

SHEET 2 OF 2



APPROVED
 YORK COUNTY BOARD OF SUPERVISORS

By: J. Mark Carter
 PLAT APPROVING AGENT

Date: MARCH 30, 1993

STATE OF VIRGINIA
 COUNTY OF YORK

IN THE CLERK'S OFFICE OF THE CIRCUIT COURT FOR THE COUNTY OF YORK THE 31ST DAY OF MARCH, 1993
 THIS MAP WAS PRESENTED AND ADMITTED TO RECORD AS THE LAW DIRECTS IN PLAT BOOK 11, PAGE 589

TESTE: NANCY B. KANE, CLERK
 CLERK

BY: Janice S. Brown

LEGEND

EASEMENTS SHOWN THUS ARE HEREBY CONVEYED TO THE COUNTY OF YORK FOR DRAINAGE & UTILITIES

MINIMUM BUILDING SETBACK LINE SHOWN THUS

CONCRETE MONUMENTS SHOWN THUS (TO BE SET)

IRON PIPES SHOWN THUS (TO BE SET)

