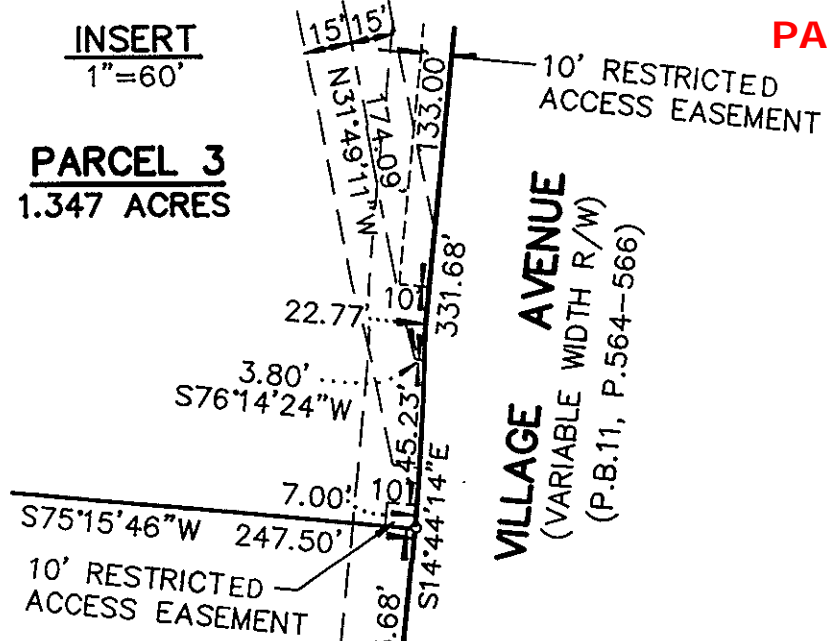


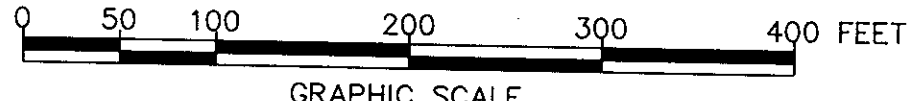
INSERT
1"=60'

PARCEL 3
1.347 ACRES

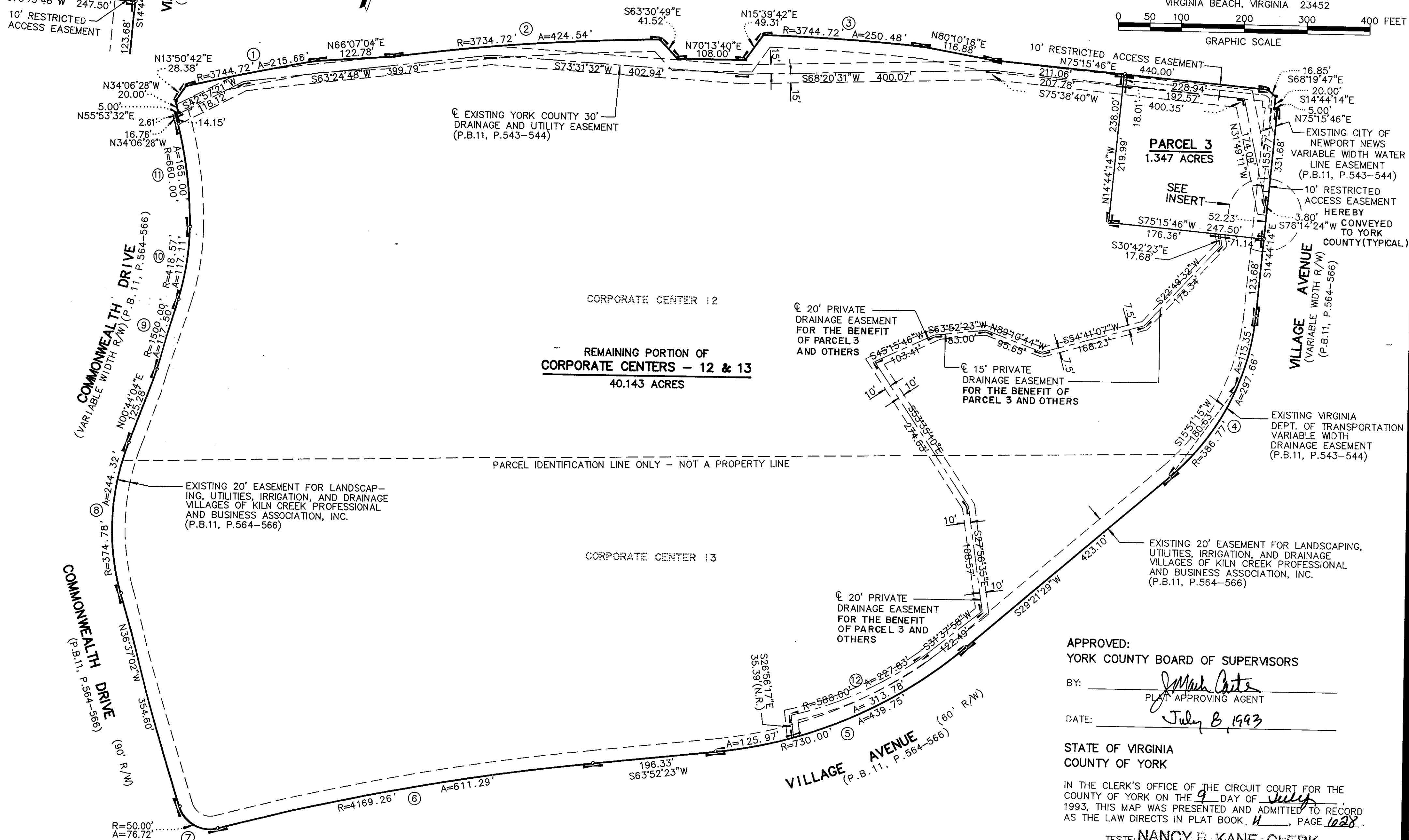


RESUBDIVISION
OF
PLAT OF SUBDIVISION
OF
THE VILLAGES OF KILN CREEK
CORPORATE CENTERS - 12 & 13,
PARCEL 3 (P.B.11, P.543-544)
COUNTY OF YORK, VIRGINIA
SCALE: 1"=100' JUNE 7, 1993
SHEET 2 OF 2

JOHN E. SIRINE AND ASSOCIATES, LTD.
SURVEYORS-ENGINEERS-PLANNERS
4317 BONNEY ROAD
VIRGINIA BEACH, VIRGINIA 23452



STATE ROUTE NO. 171 - VICTORY BOULEVARD
(VARIABLE WIDTH) (D.B. 1244, P. 1535)



REMAINING PORTION OF
CORPORATE CENTERS - 12 & 13
40.143 ACRES

APPROVED:
YORK COUNTY BOARD OF SUPERVISORS
BY: *J. Mark Carter*
PLAT APPROVING AGENT
DATE: *July 8, 1993*

STATE OF VIRGINIA
COUNTY OF YORK
IN THE CLERK'S OFFICE OF THE CIRCUIT COURT FOR THE
COUNTY OF YORK ON THE *9* DAY OF *July*,
1993, THIS MAP WAS PRESENTED AND ADMITTED TO RECORD
AS THE LAW DIRECTS IN PLAT BOOK *H*, PAGE *1028*.

TESTE: *NANCY B. KANE*, CLERK
BY: *Rachael R. ...*