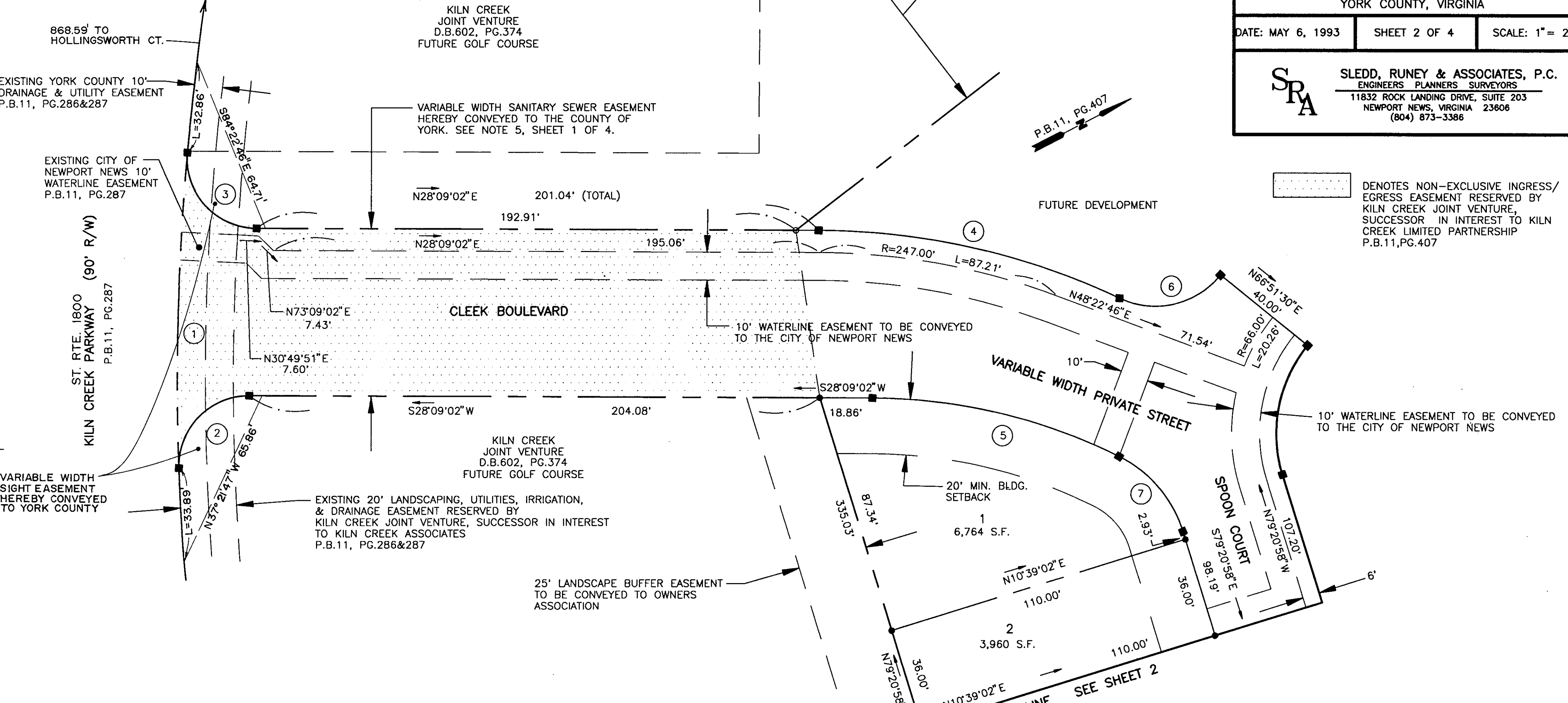


SIGHT EASEMENTS AT EACH STREET INTERSECTION, AS SHOWN ON THIS PLAT, ARE HEREBY CONVEYED TO YORK COUNTY, PURSUANT TO THE PROVISIONS OF SECTION 20.5-101, YORK COUNTY CODE. NO SIGN, PLANTING, STRUCTURES OR OTHER OBSTRUCTIONS WHICH OBSCURE OR IMPEDE SIGHT LINES BETWEEN THREE (3) FEET AND SIX (6) FEET IN HEIGHT SHALL BE ALLOWED WITHIN THESE SIGHT EASEMENT AREAS. THE COUNTY SHALL HAVE THE RIGHT AT ANY TIME TO ENTER INTO THE SIGHT EASEMENT AREAS TO REMOVE ANY OBJECT, MATERIAL OR OTHER OBSTRUCTION THAT HINDERS CLEAR SIGHT ACROSS THE AREA.

PLAT OF SUBDIVISION
THE VILLAGES OF KILN CREEK
THE SANCTUARY AT KILN CREEK
SECTION ONE
SINGLE FAMILY ATTACHED 1
YORK COUNTY, VIRGINIA

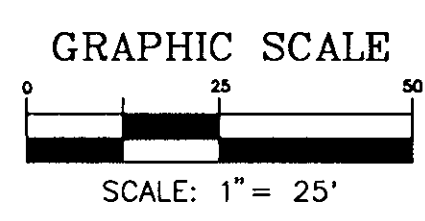
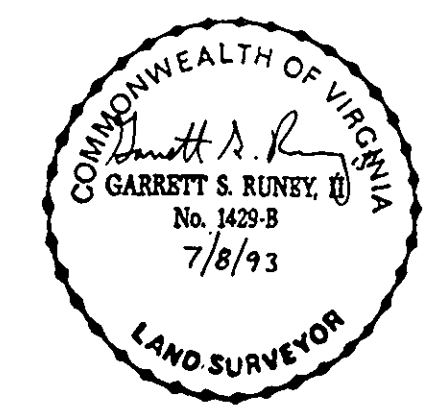
DATE: MAY 6, 1993 SHEET 2 OF 4 SCALE: 1" = 25'

SRA SLEDD, RUNEY & ASSOCIATES, P.C.
ENGINEERS PLANNERS SURVEYORS
11832 ROCK LANDING DRIVE, SUITE 203
NEWPORT NEWS, VIRGINIA 23606
(804) 873-3386



CURVE DATA TABLE

CURVE	DELTA	RADIUS	LENGTH	TANGENT	CHORD	BEARING
1	07°07'35"	910.00'	113.19'	56.67'	113.11'	S60°36'58"E
2	92°19'47"	25.00'	40.29'	26.04'	36.07'	S18°00'52"E
3	94°47'48"	25.00'	41.36'	27.19'	36.80'	N75°32'56"E
4	25°00'13"	255.00'	111.28'	56.54'	110.40'	S40°39'09"W
5	26°14'04"	200.00'	91.58'	46.60'	90.78'	S41°16'04"W
6	76°17'45"	30.00'	39.95'	23.56'	37.06'	N15°00'23"E
7	46°15'56"	45.00'	36.34'	19.22'	35.36'	S77°31'04"W
8	04°52'05"	110.00'	9.35'	4.68'	9.34'	S81°47'01"E
9	12°57'28"	110.00'	24.88'	12.49'	24.82'	N89°18'13"E
10	12°53'27"	110.00'	24.75'	12.43'	24.70'	N76°22'45"E
11	12°06'18"	110.00'	23.24'	11.66'	23.20'	N63°52'52"E
12	12°43'07"	110.00'	24.42'	12.26'	24.37'	N51°28'10"E
13	02°27'35"	110.00'	4.72'	2.36'	4.72'	N43°52'49"E
14	58°00'00"	70.00'	70.86'	38.80'	67.87'	N71°39'02"E
15	03°54'19"	110.00'	7.50'	3.75'	7.50'	N40°41'52"E
16	13°05'30"	110.00'	25.13'	12.62'	25.08'	N32°11'58"E
17	13°56'45"	110.00'	26.77'	13.45'	26.71'	N18°40'50"E
18	13°48'34"	110.00'	26.51'	13.32'	26.45'	N04°48'11"E
19	14°06'59"	110.00'	27.10'	13.62'	27.03'	N09°09'36"W
20	92°00'00"	70.00'	112.40'	72.49'	100.71'	N03°20'58"W
21	94°19'19"	50.00'	82.31'	53.92'	73.33'	S32°11'18"E



APPROVED:
YORK COUNTY BOARD OF SUPERVISORS
BY: Mark Carter
PLAT APPROVING AGENT
DATE: SEPTEMBER 15, 1993

STATE OF VIRGINIA
COUNTY OF YORK
IN THE CLERK'S OFFICE OF THE CIRCUIT COURT FOR THE COUNTY OF YORK, THE 17 DAY OF Sept, 1993. THIS MAP WAS PRESENTED AND ADMITTED TO RECORD AS THE LAW DIRECTS IN PLAT BOOK 11, PAGE 660.
TESTE: Kathy A. Kane CLERK
BY: Imogene S. Barry