

Deed Book 781 Page 660

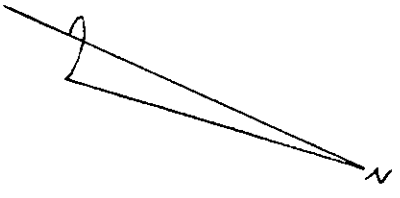
Filed in the Clerk's Office, Circuit Court, York Co., Va.
the 10th day of March 1894

Teste:

Nancy B. Kane, Clerk

10:51 AM

D.C.



FIRST STREET

N 24° 01' 20" W → 114'

BEATRICE CARTER

DB 90 PG 74
DB 151 PG 204

OCCUPATION LINE
N 64° 58' E 150'

MAGGIE L. ASKEW
DB 91 PG 339

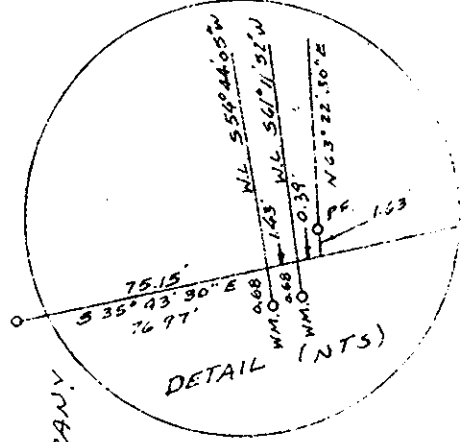
S 65° 58' 40" W →

241.24'

DOROTHY WHITE
DB 126 PG 61

FRAME SHED

DEED LINE
N 65° 58' 40" E



DETAIL (NTS)

H.D. OIL COMPANY
DB 365 PG 6

75.15'

S 35° 43' 30" E 76.97'

U.S. ROUTE 17

PLAT SHOWING WATERLINE
EASEMENTS ON PROPERTY
OF DOROTHY WHITE AND
BEATRICE CARTER.

GRAFTON DISTRICT
YORK COUNTY, VIRGINIA

SCALE: 1" = 40'

THE PROPERTY AS DEPICTED ON THIS PLAT
DOES NOT VIOLATE THE PROVISIONS OF THE
YORK COUNTY SUBDIVISION ORDINANCE

SIGNED: *Mark Out*
DIR. OF PLANNING & COM. DEV.
DATE: March 10, 1994

YORKTOWN INDUSTRIES, INC.
DB 235 PG 392

