

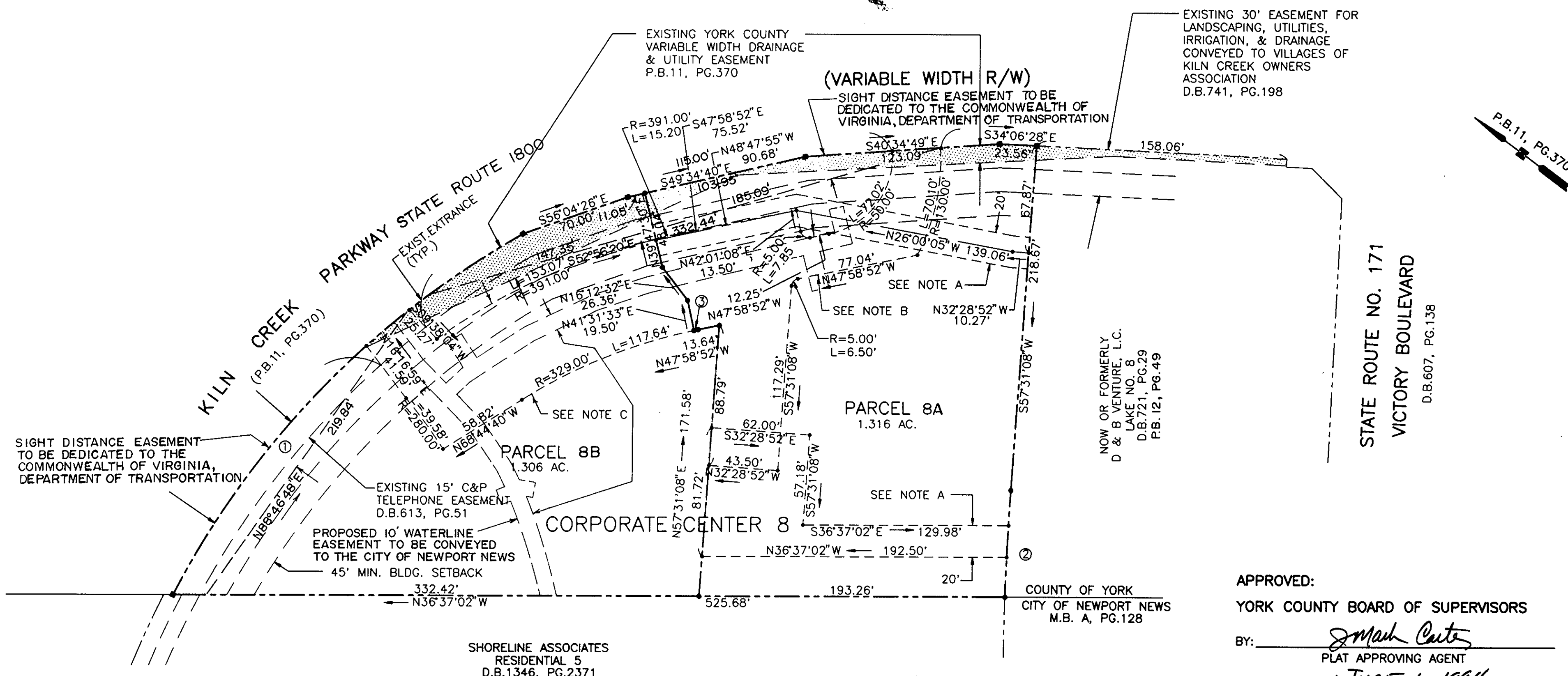
PLAT OF RESUBDIVISION
THE VILLAGES OF KILN CREEK
CORPORATE CENTER 8

COUNTY OF YORK, VIRGINIA

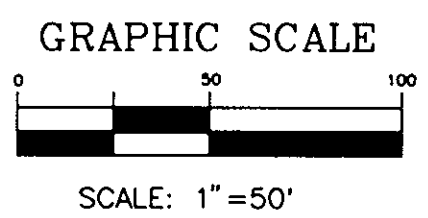
DATE: APR.26, 1994 SHEET 2 OF 2 SCALE: 1"=50'



SLEDD, RONEY & ASSOCIATES, P.C.
ENGINEERS PLANNERS SURVEYORS
11832 ROCK LANDING DRIVE, SUITE 203
NEWPORT NEWS, VIRGINIA 23606
(804) 873-3386



- NOTES: A. DRAINAGE EASEMENT HEREBY RESERVED FOR PARCEL B.
B. INGRESS/EGRESS EASEMENT HEREBY RESERVED FOR PARCEL B.
C. INGRESS/EGRESS EASEMENT HEREBY RESERVED FOR PARCEL A.



SEE SHEET 1 FOR CURVE DATA TABLE.

APPROVED:
YORK COUNTY BOARD OF SUPERVISORS
BY: James Carter
PLAT APPROVING AGENT
DATE: JUNE 1, 1994

STATE OF VIRGINIA
COUNTY OF YORK
IN THE CLERK'S OFFICE OF THE CIRCUIT COURT FOR THE COUNTY OF YORK, THE 12 DAY OF June, 1994.
THIS MAP WAS PRESENTED AND ADMITTED TO RECORD AS THE LAW DIRECTS IN PLAT BOOK 12, PAGE 61.
TESTE: Nancy B. Kane
CLERK
BY: Garrett S. Roney

