

KILN CREEK
JOINT VENTURE
D.B. 602, PG. 374
FUTURE GOLF COURSE

EXISTING VARIABLE WIDTH
PRIVATE DRAINAGE EASEMENT
D.B. 700, PG. 675
TERRY/PETERSON RESIDENTIAL TWO &
CRESTAR BANK

WATERLINE EASEMENT PLAT
OF
**THE SANCTUARY
AT KILN CREEK**

SECTION TWO
SINGLE FAMILY ATTACHED 1
YORK COUNTY, VIRGINIA

105

DATE: APRIL 8, 1994

SHEET 3 OF 4

SCALE: 1" = 25'



SLEDD, RUNEY & ASSOCIATES, P.C.
ENGINEERS PLANNERS SURVEYORS
11832 ROCK LANDING DRIVE, SUITE 203
NEWPORT NEWS, VIRGINIA 23606
(804) 873-3388



MATCHLINE SEE SHEET 2

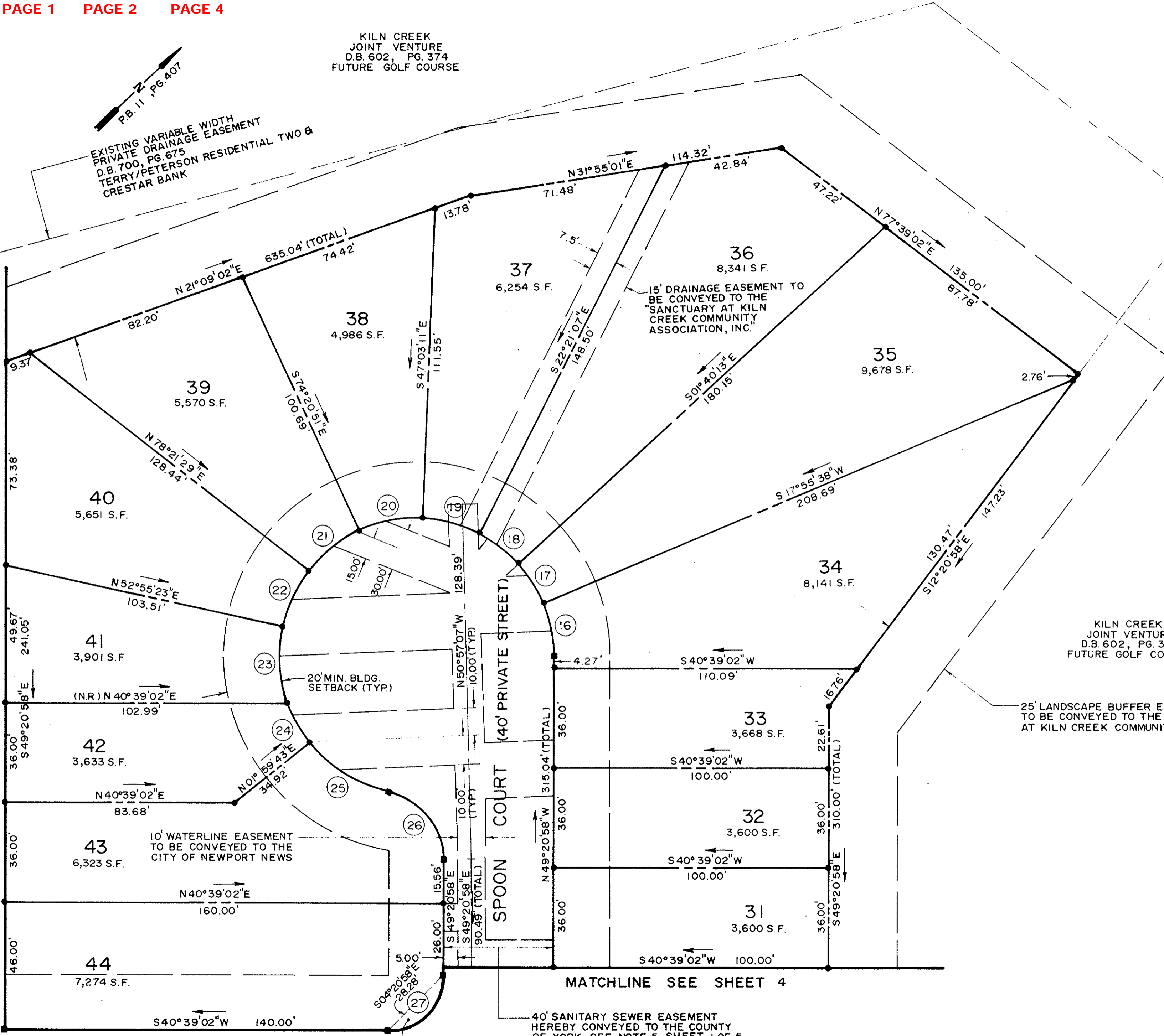
MATCHLINE SEE SHEET 4

MATCHLINE SEE SHEET 4

GRAPHIC SCALE



1 inch = 25 feet



15' DRAINAGE EASEMENT TO
BE CONVEYED TO THE
"SANCTUARY AT KILN
CREEK COMMUNITY
ASSOCIATION, INC."

KILN CREEK
JOINT VENTURE
D.B. 602, PG. 374
FUTURE GOLF COURSE

25' LANDSCAPE BUFFER EASEMENT
TO BE CONVEYED TO THE "SANCTUARY
AT KILN CREEK COMMUNITY ASSOCIATION, INC."

40' SANITARY SEWER EASEMENT
HEREBY CONVEYED TO THE COUNTY
OF YORK. SEE NOTE 5, SHEET 1 OF 5.

VARIABLE WIDTH SIGHT EASEMENT
HEREBY CONVEYED TO THE COUNTY OF YORK

Plat Book No. 12 Page 105

NANCY B. KANE, CLERK
Filed in the Clerk's Office, Circuit Court, York Co., Va.
the 5 day of August 19 94
Teste:
Nancy B. Kane, Clerk
Carol D. [Signature] DC
Deed Book 808 Page 773