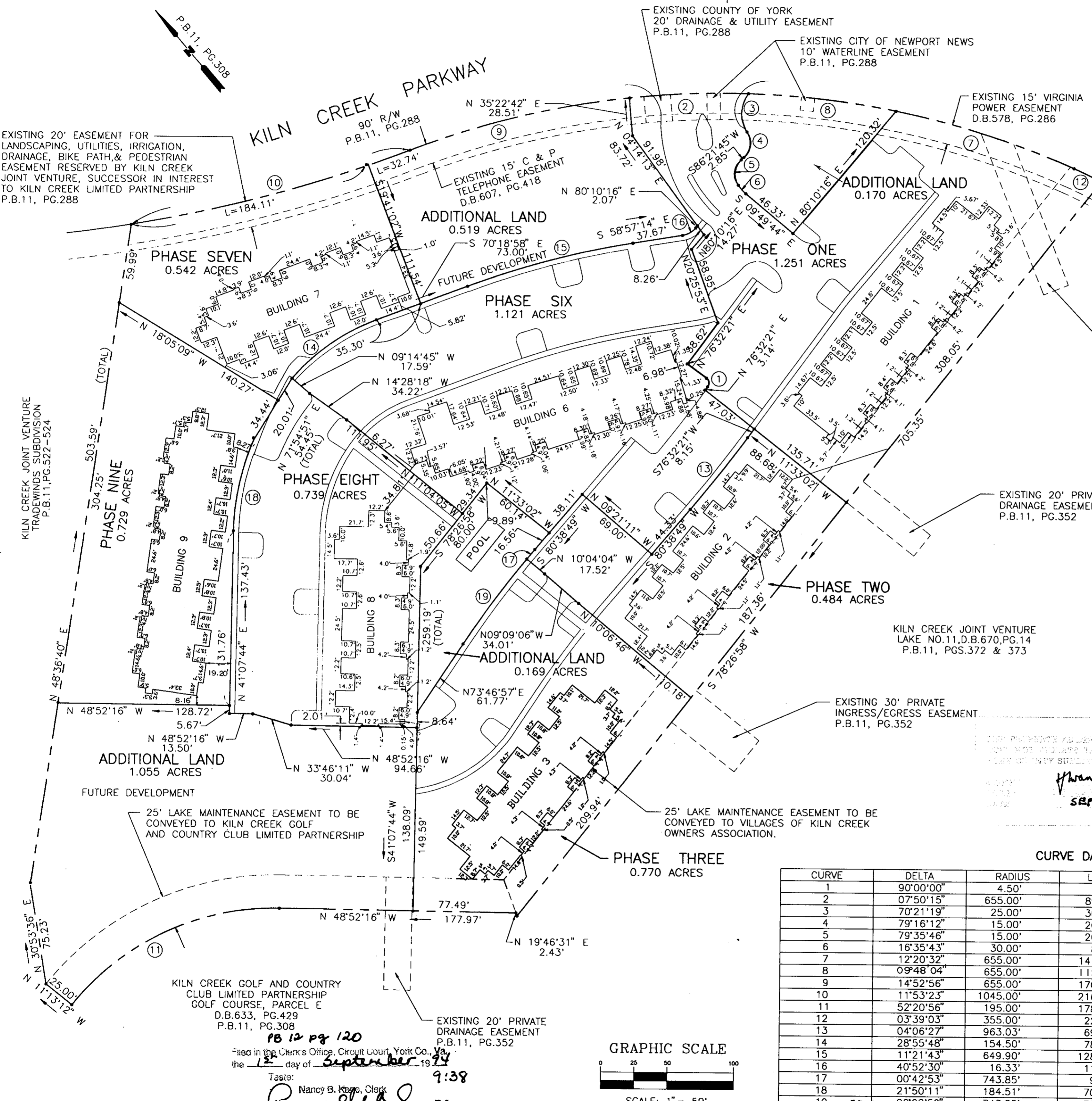


PLAT OF CONDOMINIUM
**EAGLE SOUND
 AT KILN CREEK**
 A CONDOMINIUM
 PHASE NINE
 THE VILLAGES OF KILN CREEK
 COUNTY OF YORK, VIRGINIA

DATE: SEP.28, 1993 SHEET 2 OF 2 SCALE: 1" = 50'

SRA SLEDD, RUNEY & ASSOCIATES, P.C.
 ENGINEERS PLANNERS SURVEYORS
 11832 ROCK LANDING DRIVE, SUITE 203
 NEWPORT NEWS, VIRGINIA 23606
 (804) 873-3386

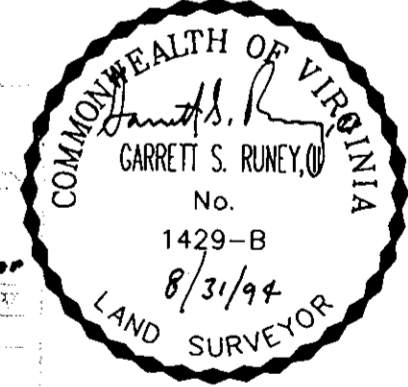
EXHIBIT A-2



AREA TABULATIONS

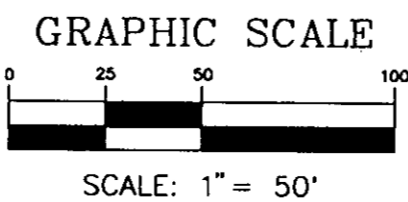
PHASE 1	1.251 AC.
PHASE 2	0.484 AC.
PHASE 3	0.770 AC.
PHASE 6	1.121 AC.
PHASE 7	0.542 AC.
PHASE 8	0.739 AC.
PHASE 9	0.729 AC.
ADDITIONAL LAND	1.913 AC.
TOTAL AREA OF SITE	7.549 AC.

PARKING TABULATION
 178 TOTAL SPACES



CURVE DATA TABLE

CURVE	DELTA	RADIUS	LENGTH	TANGENT	CHORD	BEARING
1	90°00'00"	4.50'	7.07'	4.50'	6.36'	N 31°32'21" E
2	07°50'15"	655.00'	89.60'	44.87'	89.53'	S 52°00'55" E
3	70°21'19"	25.00'	30.70'	17.62'	28.81'	S 42°16'12" W
4	79°16'12"	15.00'	20.75'	12.42'	19.14'	N 46°43'39" E
5	79°35'46"	15.00'	20.84'	12.50'	19.20'	S 46°33'51" W
6	16°35'43"	30.00'	8.69'	4.38'	8.66'	S 01°35'01" E
7	12°20'32"	655.00'	141.10'	70.82'	140.82'	N 32°07'27" W
8	09°48'04"	655.00'	112.04'	56.16'	111.91'	N 43°11'45" W
9	14°52'56"	655.00'	170.13'	85.55'	169.65'	N 63°22'30" W
10	11°53'23"	1045.00'	216.85'	108.82'	216.46'	S 64°52'16" E
11	52°20'56"	195.00'	178.16'	95.84'	172.03'	N 75°02'44" W
12	03°39'03"	355.00'	22.62'	11.31'	22.62'	S 24°07'40" E
13	04°06'27"	963.03'	69.04'	34.54'	69.03'	N 78°35'35" E
14	28°55'48"	154.50'	78.01'	39.86'	77.18'	N 84°46'51" W
15	11°21'43"	649.90'	128.88'	64.65'	128.67'	N 64°38'06" W
16	40°52'30"	16.33'	11.65'	6.09'	11.41'	S 79°23'29" E
17	00°42'53"	743.85'	9.28'	4.64'	9.28'	N 80°17'22" E
18	21°50'11"	184.51'	70.32'	35.59'	69.89'	N 52°29'43" E
19	06°08'59"	743.85'	79.84'	39.96'	79.80'	N 76°51'26" E



Filed in the Clerk's Office, Circuit Court, York Co., Va.
 the 12 day of September 1994
 9:38
 Taster: Nancy B. Kays, Clerk
[Signature] DC