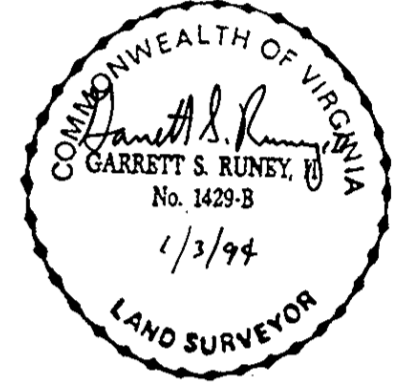


THE FAIRWAYS GROUP L.P.  
D.B. 791, PG. 73  
FUTURE GOLF COURSE

PLAT OF SUBDIVISION  
THE VILLAGES OF KILN CREEK  
**THE SANCTUARY  
AT KILN CREEK**  
SECTION TWO  
SINGLE FAMILY ATTACHED 1  
YORK COUNTY, VIRGINIA

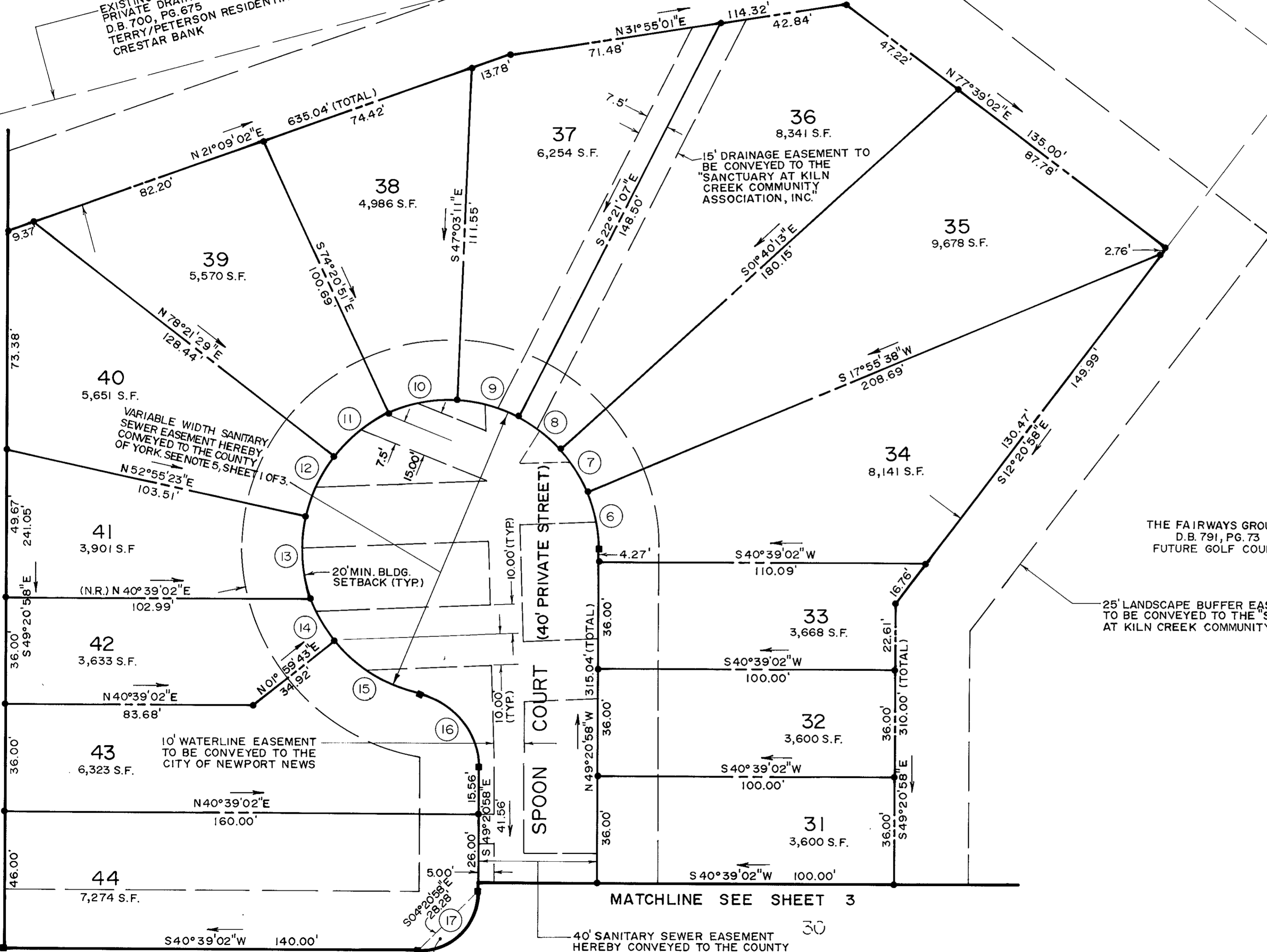
DATE: JAN. 3, 1994 SHEET 2 OF 3 SCALE: 1" = 25'

**SRA** SLEDD, RUNEY & ASSOCIATES, P.C.  
ENGINEERS PLANNERS SURVEYORS  
11832 ROCK LANDING DRIVE, SUITE 203  
NEWPORT NEWS, VIRGINIA 23606  
(804) 873-3386



EXISTING VARIABLE WIDTH  
PRIVATE DRAINAGE EASEMENT  
D.B. 700, PG. 675  
TERRY/PETERSON RESIDENTIAL TWO &  
CRESTAR BANK

FUTURE DEVELOPMENT



THE FAIRWAYS GROUP L.P.  
D.B. 791, PG. 73  
FUTURE GOLF COURSE

25' LANDSCAPE BUFFER EASEMENT  
TO BE CONVEYED TO THE "SANCTUARY  
AT KILN CREEK COMMUNITY ASSOCIATION, INC."

40' SANITARY SEWER EASEMENT  
HEREBY CONVEYED TO THE COUNTY  
OF YORK. SEE NOTE 5, SHEET 1 OF 3.

VARIABLE WIDTH SIGHT EASEMENT  
HEREBY CONVEYED TO THE COUNTY OF YORK

APPROVED:  
YORK COUNTY BOARD OF SUPERVISORS  
BY: Mark Carter  
PLAT APPROVING AGENT  
DATE: SEPTEMBER 7, 1994

STATE OF VIRGINIA  
COUNTY OF YORK

IN THE CLERK'S OFFICE OF THE CIRCUIT COURT FOR  
THE COUNTY OF YORK, THE 12<sup>th</sup> DAY OF Sept, 1994.  
THIS MAP WAS PRESENTED AND ADMITTED TO RECORD AS  
THE LAW DIRECTS IN PLAT BOOK 12, PAGE 137.

TESTE: Nancy B. Kane  
CLERK

BY: R. S. Sledd, P.C.

MATCHLINE SEE SHEET 3

MATCHLINE SEE SHEET 3

BRASSIE DRIVE

GRAPHIC SCALE



1 inch = 25 ft.