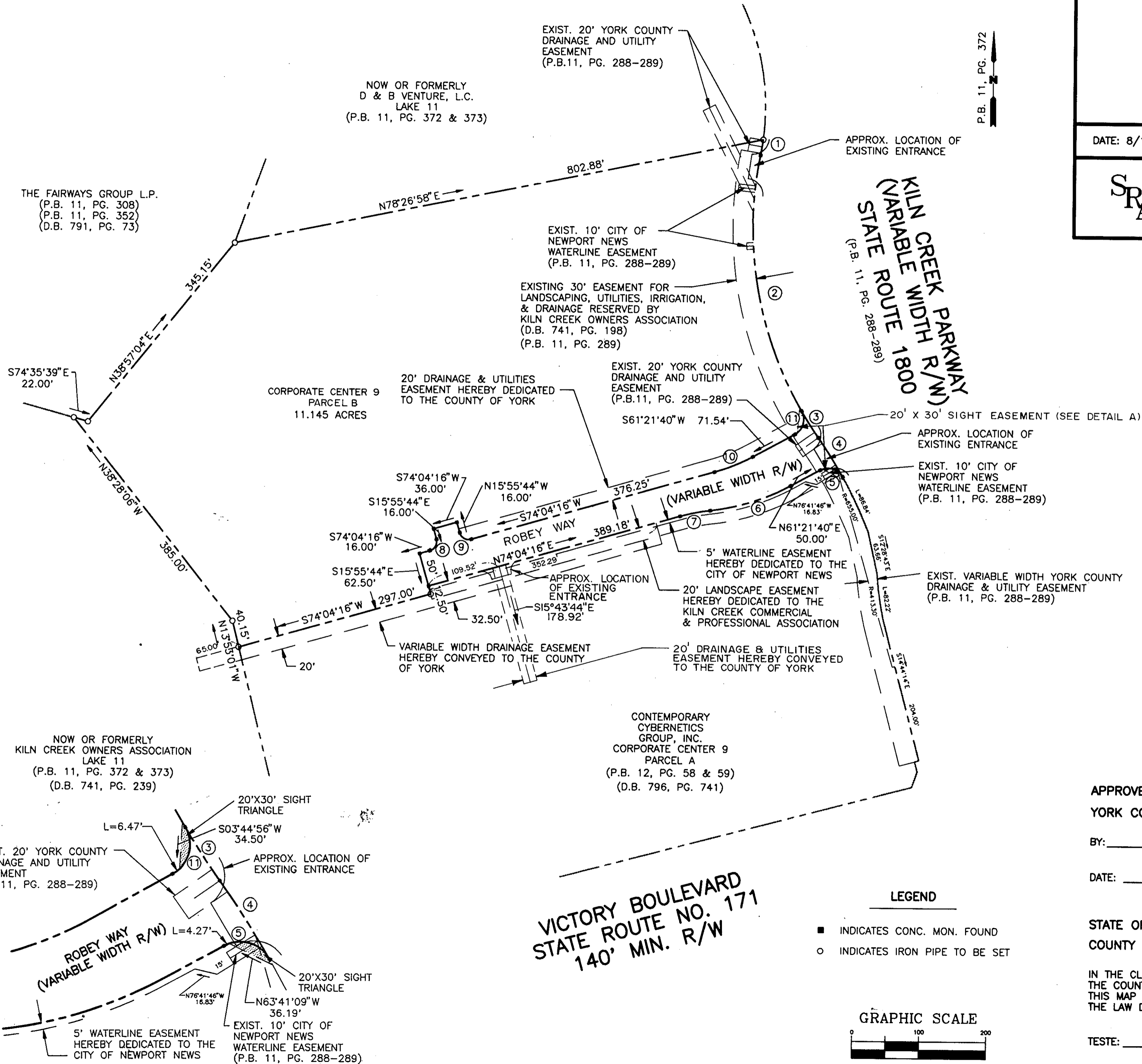


PLAT SHOWING
RIGHT-OF-WAY DEDICATION FOR
ROBEY WAY
COUNTY OF YORK, VIRGINIA

DATE: 8/16/94 SHEET 2 OF 2 SCALE: 1" = 100'

SRA SLEDD, RUNEY & ASSOCIATES, P.C.
ENGINEERS PLANNERS SURVEYORS
11832 ROCK LANDING DRIVE, SUITE 203
NEWPORT NEWS, VIRGINIA 23606
(804) 873-3386



DETAIL A
SCALE: 1" = 50'

LEGEND

- INDICATES CONC. MON. FOUND
- INDICATES IRON PIPE TO BE SET

GRAPHIC SCALE



SCALE: 1" = 100'

APPROVED:
YORK COUNTY BOARD OF SUPERVISORS
BY: James C. Pitt
PLAT APPROVING AGENT
DATE: December 8, 1994

STATE OF VIRGINIA
COUNTY OF YORK
IN THE CLERK'S OFFICE OF THE CIRCUIT COURT FOR THE COUNTY OF YORK, THE 8 DAY OF Dec., 1994
THIS MAP WAS PRESENTED AND ADMITTED TO RECORD AS THE LAW DIRECTS IN PLAT BOOK 12, PAGE 165.

TESTE: NANCY S. KAME
CLERK
BY: Garrett meadows