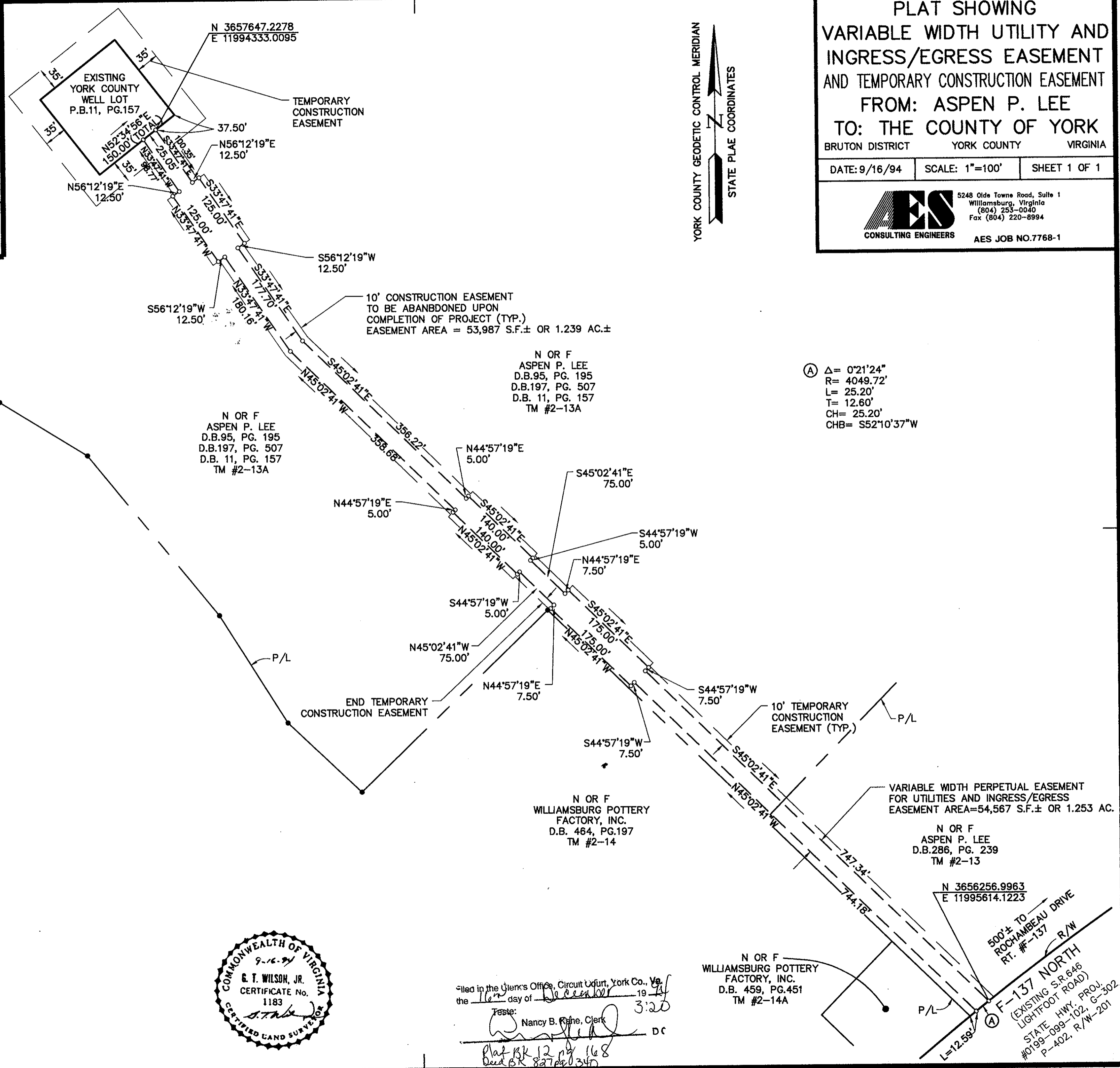
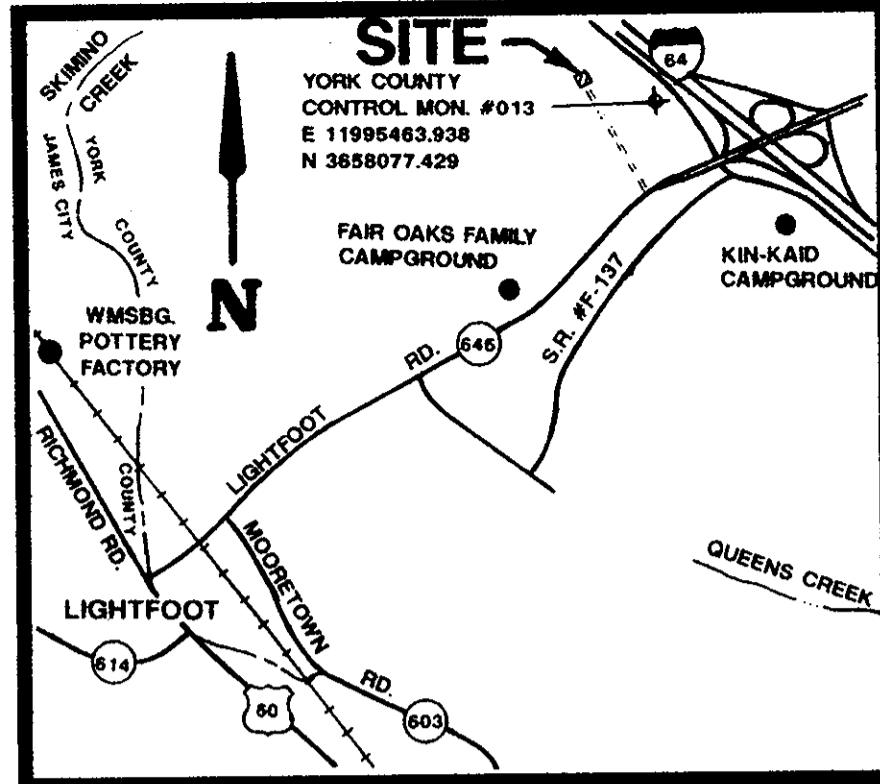
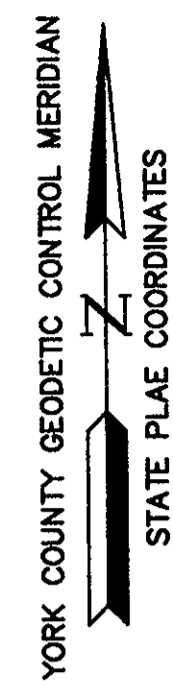


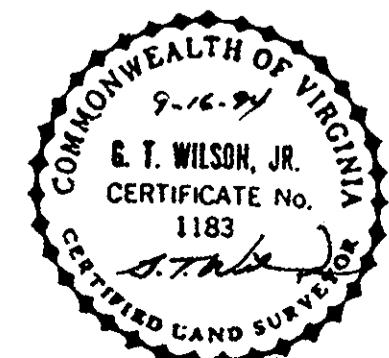
PLAT SHOWING
 VARIABLE WIDTH UTILITY AND
 INGRESS/EGRESS EASEMENT
 AND TEMPORARY CONSTRUCTION EASEMENT
 FROM: ASPEN P. LEE
 TO: THE COUNTY OF YORK

BRUTON DISTRICT YORK COUNTY VIRGINIA
 DATE: 9/16/94 SCALE: 1"=100' SHEET 1 OF 1

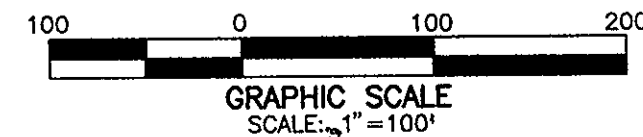
ES CONSULTING ENGINEERS
 5248 Old Towne Road, Suite 1
 Williamsburg, Virginia
 (804) 253-0040
 Fax (804) 220-8994
 AES JOB NO. 7768-1



Ⓐ Δ= 0°21'24"
 R= 4049.72'
 L= 25.20'
 T= 12.60'
 CH= 25.20'
 CHB= S52°10'37"W



Filed in the Clerk's Office, Circuit Court, York Co., Va. on the 16th day of December 1994
 Nancy B. Rife, Clerk
 Plat BK 12 pg 168
 Deed BK 827 pg 340



MARCIA 16.09.94-11:22 7768PL01