

PLAT OF CONDOMINIUM
EAGLE SOUND
 AT KILN CREEK
 A CONDOMINIUM
 PHASE FIVE
 THE VILLAGES OF KILN CREEK
 COUNTY OF YORK, VIRGINIA

DATE: APR.1, 1994 SHEET 2 OF 2 SCALE: 1" = 50'



SLEDD, RUNEY & ASSOCIATES, P.C.
 ENGINEERS PLANNERS SURVEYORS
 11832 ROCK LANDING DRIVE, SUITE 203
 NEWPORT NEWS, VIRGINIA 23606
 (804) 873-3388

EXHIBIT A-2

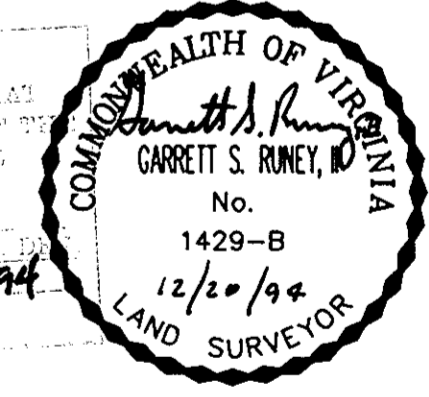
AREA TABULATIONS

PHASE 1	1.251 AC.
PHASE 2	0.484 AC.
PHASE 3	0.770 AC.
PHASE 4	1.055 AC.
PHASE 5	0.858 AC.
PHASE 6	1.121 AC.
PHASE 7	0.542 AC.
PHASE 8	0.739 AC.
PHASE 9	0.729 AC.
TOTAL AREA OF SITE	7.549 AC.

PARKING TABULATION
 226 TOTAL SPACES

THIS PROPERTY AS DEPICTED ON THIS PLAT DOES NOT VIOLATE THE PROVISIONS OF THE YORK COUNTY SUBDIVISION ORDINANCE

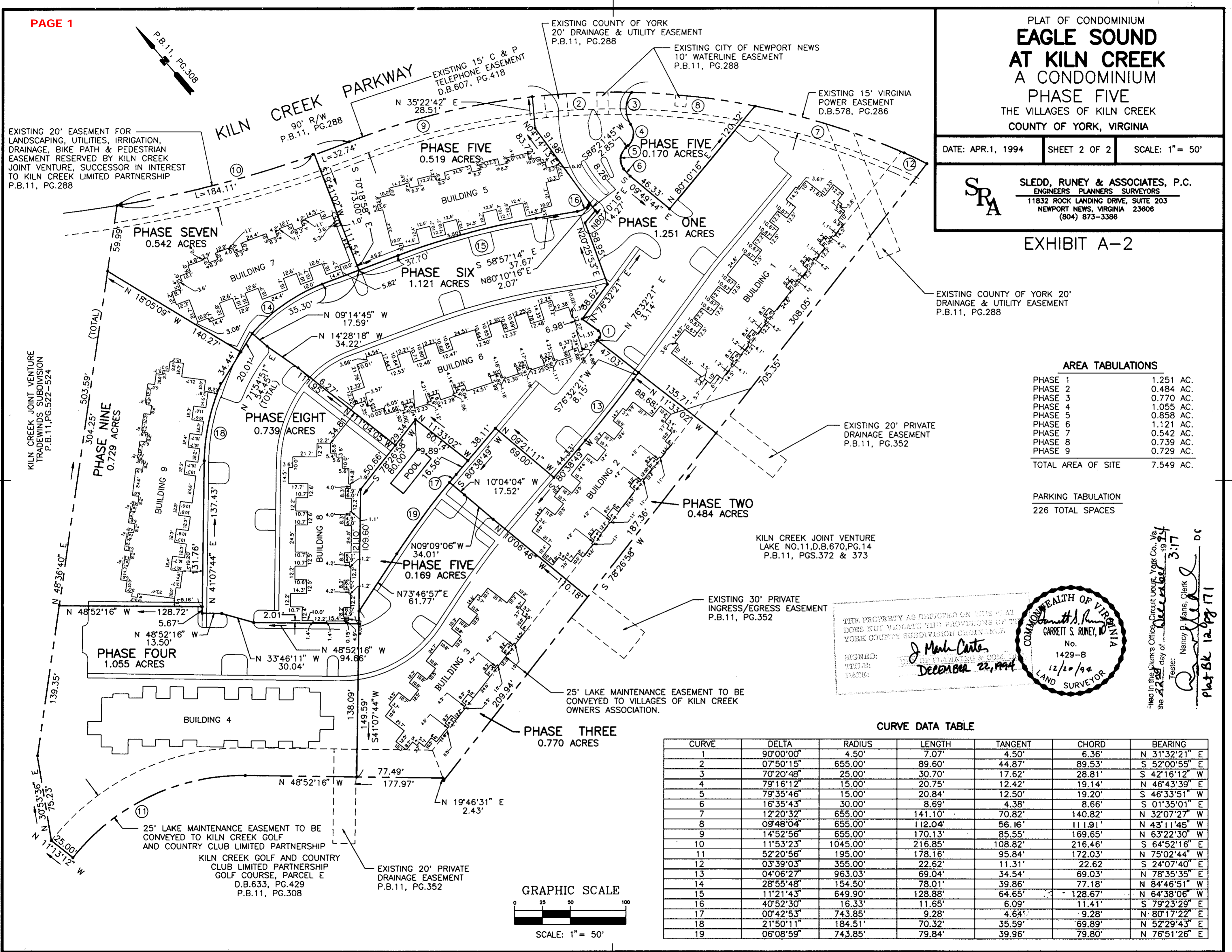
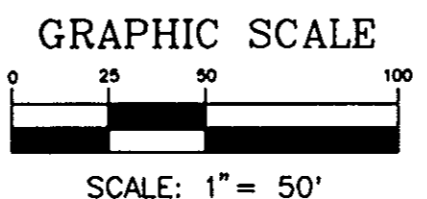
SIGNED: *J. Mark Carter*
 TITLE: *DEPUTY PLANNING & COMM. DEPT.*
 DATE: *December 22, 1994*



Filed in the Clerk's Office, Circuit Court, York Co., Va. the 22nd day of December 1994
 3:17
 Nancy B. Kane, Clerk
 Plat BK 12 pg 11 DC

CURVE DATA TABLE

CURVE	DELTA	RADIUS	LENGTH	TANGENT	CHORD	BEARING
1	90°00'00"	4.50'	7.07'	4.50'	6.36'	N 31°32'21" E
2	07°50'15"	655.00'	89.60'	44.87'	89.53'	S 52°00'55" E
3	70°20'48"	25.00'	30.70'	17.62'	28.81'	S 42°16'12" W
4	79°16'12"	15.00'	20.75'	12.42'	19.14'	N 46°43'39" E
5	79°35'46"	15.00'	20.84'	12.50'	19.20'	S 46°33'51" W
6	16°35'43"	30.00'	8.69'	4.38'	8.66'	S 01°35'01" E
7	12°20'32"	655.00'	141.10'	70.82'	140.82'	N 32°07'27" W
8	09°48'04"	655.00'	112.04'	56.16'	111.91'	N 43°11'45" W
9	14°52'56"	655.00'	170.13'	85.55'	169.65'	N 63°22'30" W
10	11°53'23"	1045.00'	216.85'	108.82'	216.46'	S 64°52'16" E
11	52°20'56"	195.00'	178.16'	95.84'	172.03'	N 75°02'44" W
12	03°39'03"	355.00'	22.62'	11.31'	22.62'	S 24°07'40" E
13	04°06'27"	963.03'	69.04'	34.54'	69.03'	N 78°35'35" E
14	28°55'48"	154.50'	78.01'	39.86'	77.18'	N 84°46'51" W
15	11°21'43"	649.90'	128.88'	64.65'	128.67'	N 64°38'06" W
16	40°52'30"	16.33'	11.65'	6.09'	11.41'	S 79°23'29" E
17	00°42'53"	743.85'	9.28'	4.64'	9.28'	N 80°17'22" E
18	21°50'11"	184.51'	70.32'	35.59'	69.89'	N 52°29'43" E
19	06°08'59"	743.85'	79.84'	39.96'	79.80'	N 76°51'26" E



EXISTING 20' EASEMENT FOR LANDSCAPING, UTILITIES, IRRIGATION, DRAINAGE, BIKE PATH & PEDESTRIAN EASEMENT RESERVED BY KILN CREEK JOINT VENTURE, SUCCESSOR IN INTEREST TO KILN CREEK LIMITED PARTNERSHIP P.B.11, PG.288

KILN CREEK JOINT VENTURE TRADEWINDS SUBDIVISION P.B.11, PG.522-524

PHASE FOUR 1.055 ACRES

25' LAKE MAINTENANCE EASEMENT TO BE CONVEYED TO KILN CREEK GOLF AND COUNTRY CLUB LIMITED PARTNERSHIP KILN CREEK GOLF AND COUNTRY CLUB LIMITED PARTNERSHIP GOLF COURSE, PARCEL E D.B.633, PG.429 P.B.11, PG.308

EXISTING 20' PRIVATE DRAINAGE EASEMENT P.B.11, PG.352

25' LAKE MAINTENANCE EASEMENT TO BE CONVEYED TO VILLAGES OF KILN CREEK OWNERS ASSOCIATION.

EXISTING 30' PRIVATE INGRESS/EGRESS EASEMENT P.B.11, PG.352

EXISTING 20' PRIVATE DRAINAGE EASEMENT P.B.11, PG.352

EXISTING COUNTY OF YORK 20' DRAINAGE & UTILITY EASEMENT P.B.11, PG.288

EXISTING COUNTY OF YORK 20' DRAINAGE & UTILITY EASEMENT P.B.11, PG.288

EXISTING CITY OF NEWPORT NEWS 10' WATERLINE EASEMENT P.B.11, PG.288

EXISTING 15' VIRGINIA POWER EASEMENT D.B.578, PG.286

EXISTING 15' C & P TELEPHONE EASEMENT D.B.607, PG.418

90° R/W P.B.11, PG.288

PHASE SEVEN 0.542 ACRES

PHASE FIVE 0.519 ACRES

PHASE FIVE 0.170 ACRES

PHASE ONE 1.251 ACRES

PHASE SIX 1.121 ACRES

PHASE EIGHT 0.739 ACRES

PHASE FIVE 0.169 ACRES

PHASE TWO 0.484 ACRES

KILN CREEK JOINT VENTURE LAKE NO.11, D.B.670, PG.14 P.B.11, PGS.372 & 373

PHASE THREE 0.770 ACRES

25' LAKE MAINTENANCE EASEMENT TO BE CONVEYED TO KILN CREEK GOLF AND COUNTRY CLUB LIMITED PARTNERSHIP KILN CREEK GOLF AND COUNTRY CLUB LIMITED PARTNERSHIP GOLF COURSE, PARCEL E D.B.633, PG.429 P.B.11, PG.308

EXISTING 20' PRIVATE DRAINAGE EASEMENT P.B.11, PG.352

25' LAKE MAINTENANCE EASEMENT TO BE CONVEYED TO VILLAGES OF KILN CREEK OWNERS ASSOCIATION.

EXISTING 30' PRIVATE INGRESS/EGRESS EASEMENT P.B.11, PG.352

EXISTING 20' PRIVATE DRAINAGE EASEMENT P.B.11, PG.352

EXISTING COUNTY OF YORK 20' DRAINAGE & UTILITY EASEMENT P.B.11, PG.288

EXISTING COUNTY OF YORK 20' DRAINAGE & UTILITY EASEMENT P.B.11, PG.288

EXISTING CITY OF NEWPORT NEWS 10' WATERLINE EASEMENT P.B.11, PG.288

EXISTING 15' VIRGINIA POWER EASEMENT D.B.578, PG.286

EXISTING 15' C & P TELEPHONE EASEMENT D.B.607, PG.418

90° R/W P.B.11, PG.288

PHASE SEVEN 0.542 ACRES

PHASE FIVE 0.519 ACRES

PHASE FIVE 0.170 ACRES

PHASE ONE 1.251 ACRES

PHASE SIX 1.121 ACRES

PHASE EIGHT 0.739 ACRES

PHASE FIVE 0.169 ACRES

PHASE TWO 0.484 ACRES

KILN CREEK JOINT VENTURE LAKE NO.11, D.B.670, PG.14 P.B.11, PGS.372 & 373

PHASE THREE 0.770 ACRES