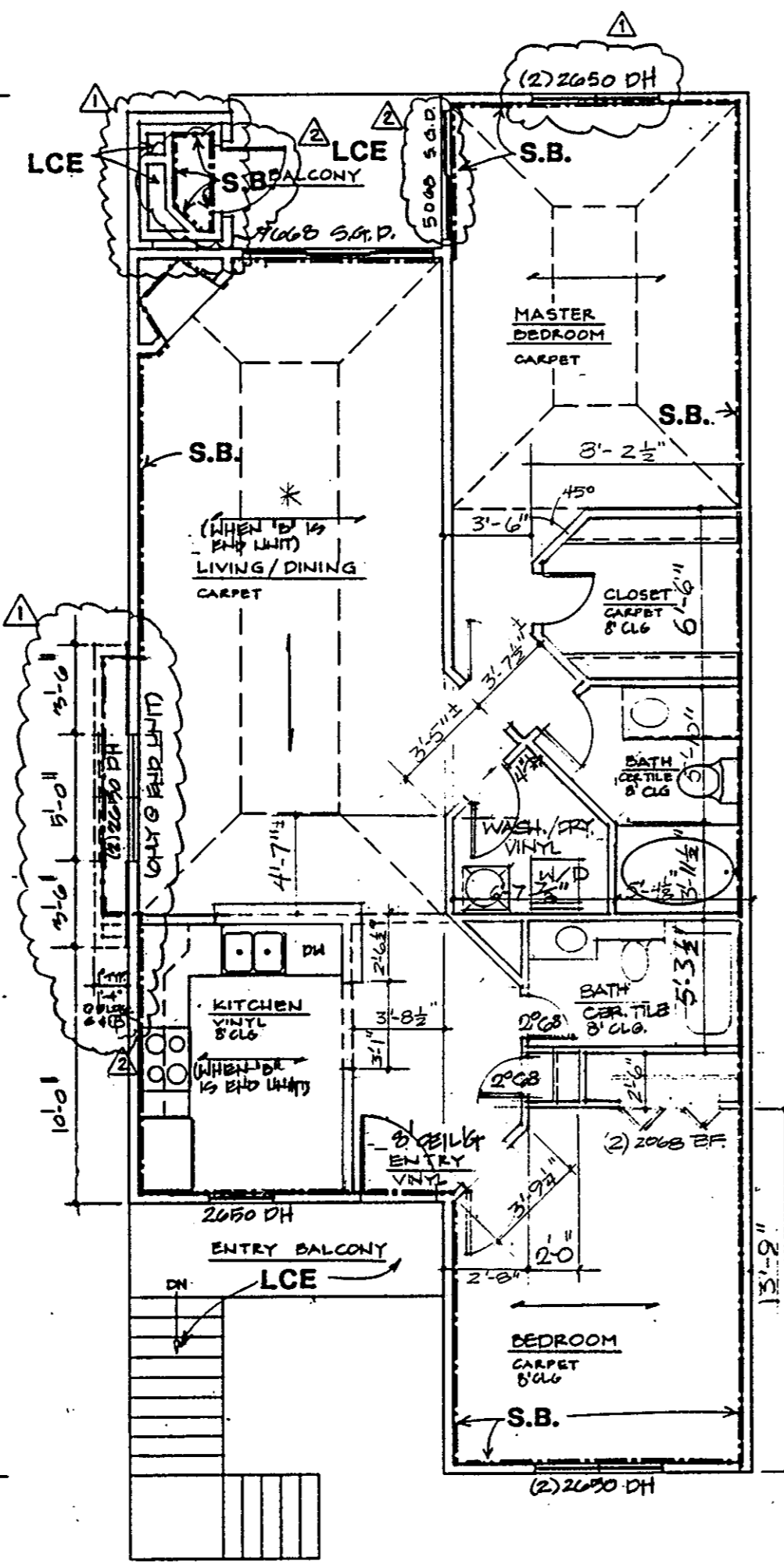
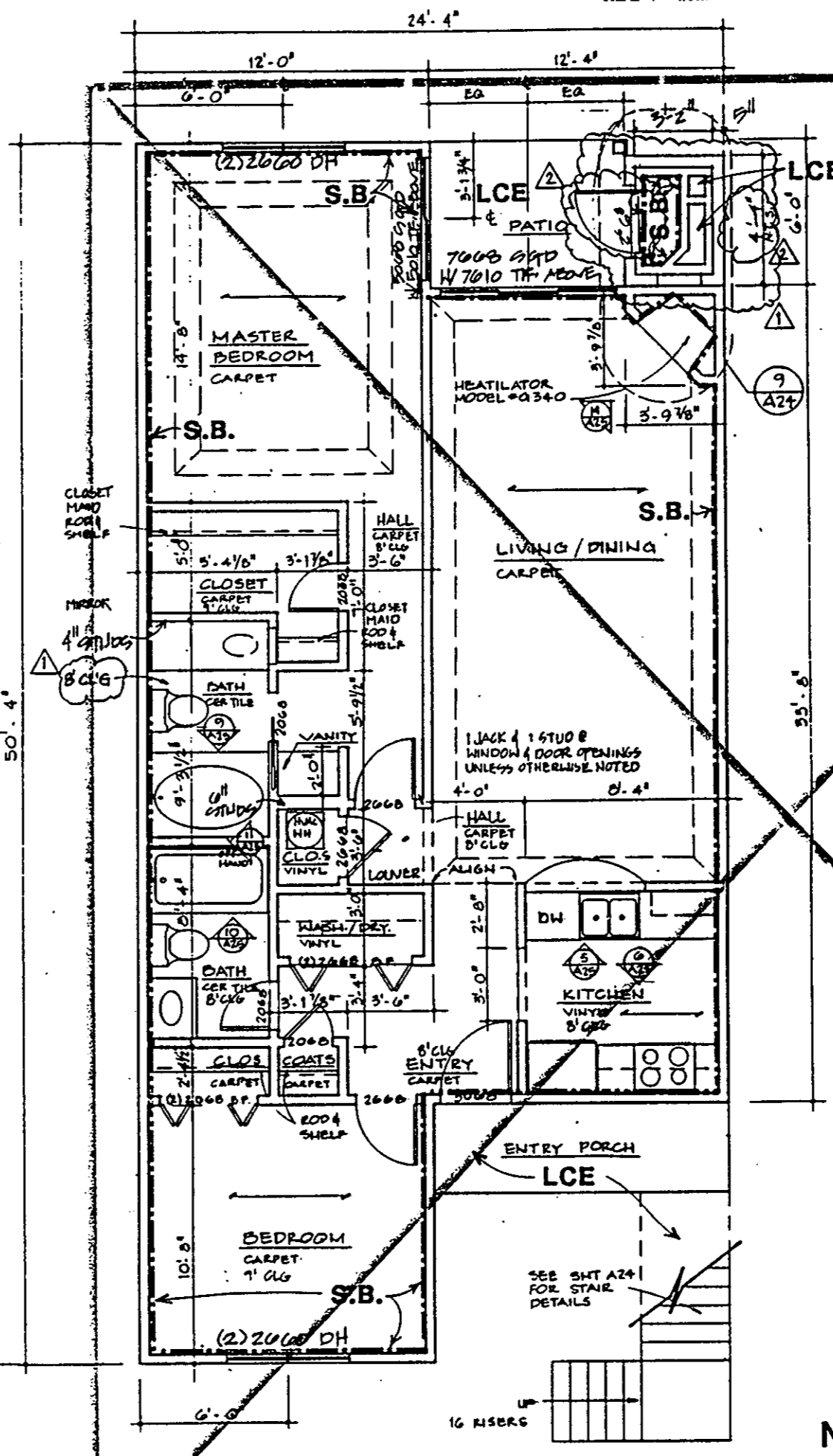


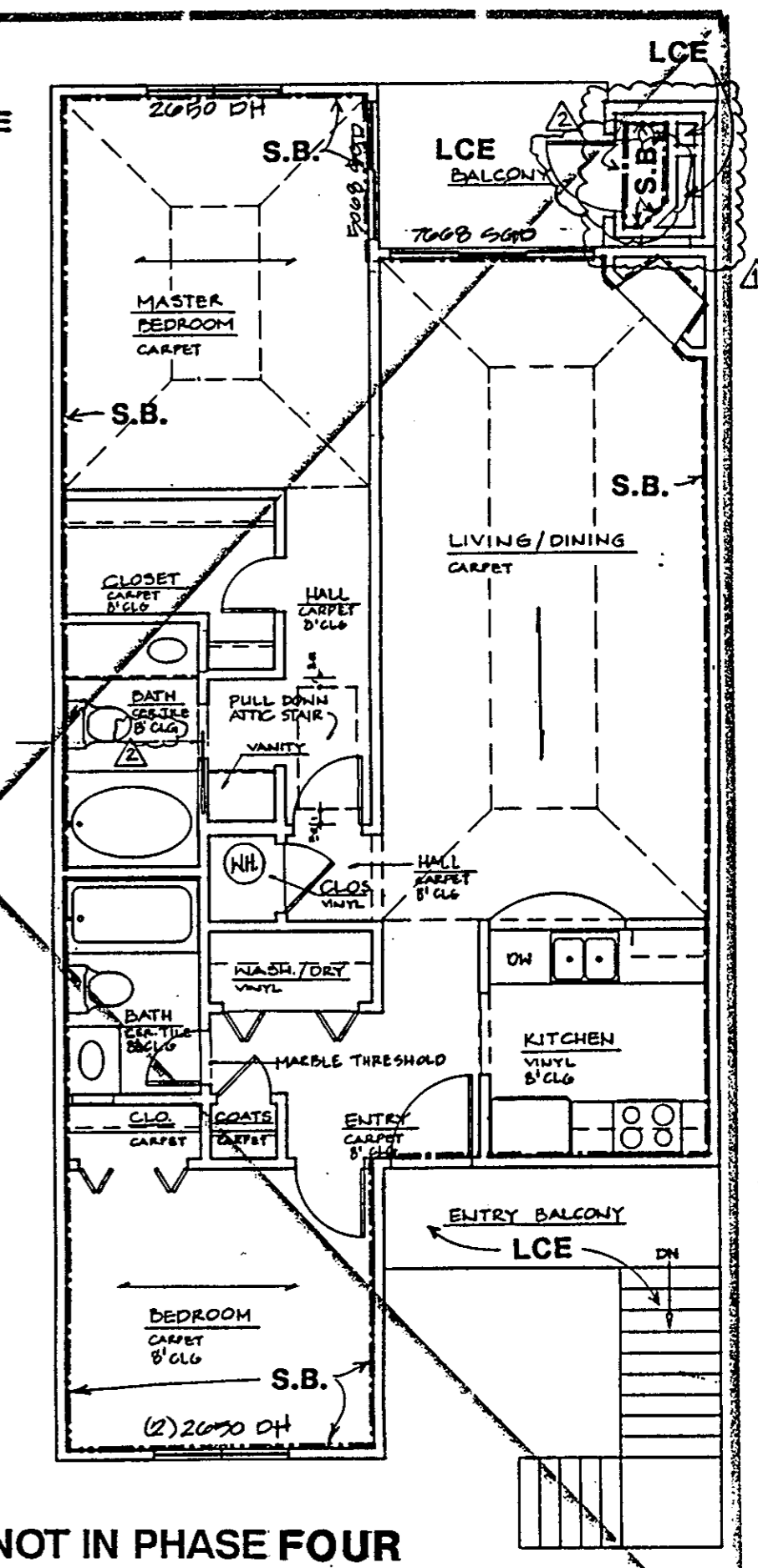
FIRST FLR. PLAN - UNIT 'E'-ALT.



SECOND FLR. PLAN - UNIT 'E'-ALT.



FIRST FLR. PLAN - UNIT 'C'



SECOND FLR. PLAN - UNIT 'C'

NOT IN PHASE FOUR

LEGEND:
 S.B. - SIDE (PERIMETER) BOUNDARY
 LCE - LIMITED COMMON ELEMENT
 CE - COMMON ELEMENT

I hereby certify that this is a correct and accurate plan, that this plan is in compliance with Virginia Code Ann. Subsections 55-79.58 (b) and (e), and that the units depicted hereon have been substantially completed.
 Garrett S. Roney, II, P.E. 4/20/95

Filed in the Clerk's Office, Circuit Court, York Co., Va.
 the 26th day of April 1995
 12:30
 Nancy B. Kane, Clerk
 PB 12 pg 234

NO	DATE	REVISIONS	BY
	10/26/91	ADDENDA	