

THE FAIRWAYS GROUP, L.P.
(P.B. 11, PG. 308)
(P.B. 11, PG. 352)
(D.B. 791, PG. 73)

THIS IS NOT A SUBDIVISION PLAT.

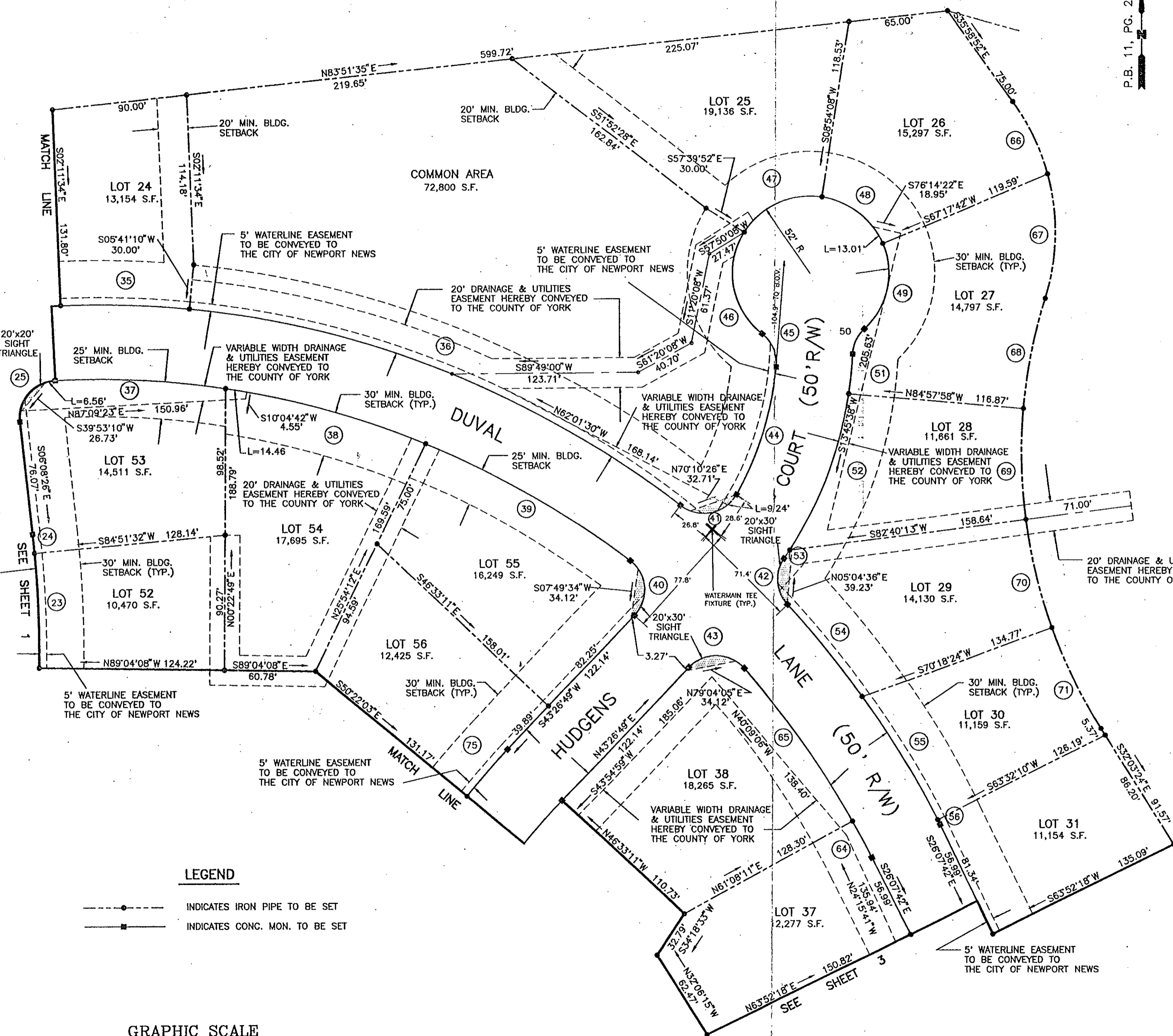
PLAT OF WATERMAIN EASEMENTS LOCATED IN
THE VILLAGES OF KILN CREEK
AVERY WOODS
CORPORATE CENTER 7
COUNTY OF YORK, VIRGINIA
ACROSS THE LANDS OF
D & B VENTURE, L.C.
TO BE CONVEYED TO
THE CITY OF NEWPORT NEWS, VIRGINIA

DATE: FEB. 1, 1995 SHEET 4 OF 4 SCALE: 1"=50'
PROJECT NO: 93-001R DRAWN BY: PAUL MICHAEL

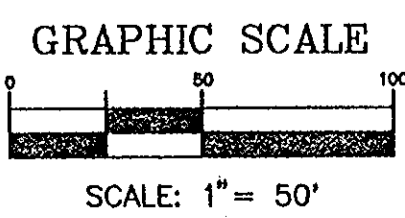
SRA SLEDD, RUNEY & ASSOCIATES, P.C.
ENGINEERS PLANNERS SURVEYORS
11832 ROCK LANDING DRIVE, SUITE 203
NEWPORT NEWS, VIRGINIA 23606
(804) 873-3386

Print File No: N-9003-N-9006 Cost Est. No 028FY95

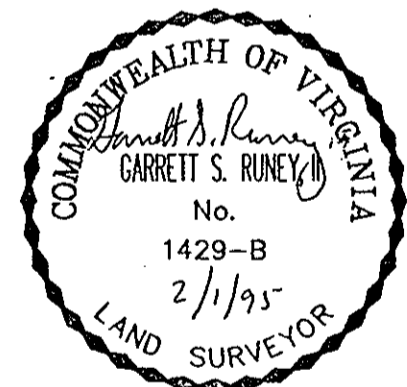
P.B. 11, PG. 288



LEGEND
 - - - - - INDICATES IRON PIPE TO BE SET
 - - - - - INDICATES CONC. MON. TO BE SET



NOW OR FORMERLY
KILN CREEK OWNERS ASSOCIATION
LAKE 11
(P.B. 11, PG. 372 & 373)
(D.B. 741, PG. 239)



Plat Book No. 12 Page 247

Filed in the Clerk's Office, Circuit Court, York Co., Va.
the 24th day of May 19 95

Teste:
Nancy B. Kane, Clerk
Carol Dosselmeier D.C.

NANCY B. KANE, CLERK