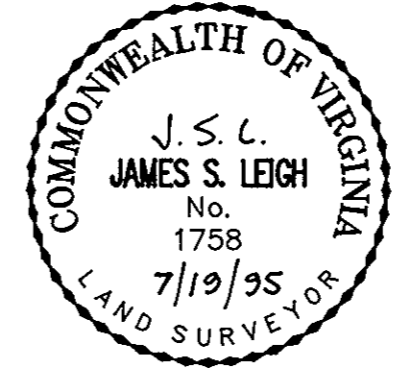
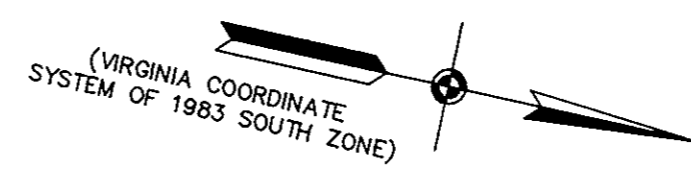
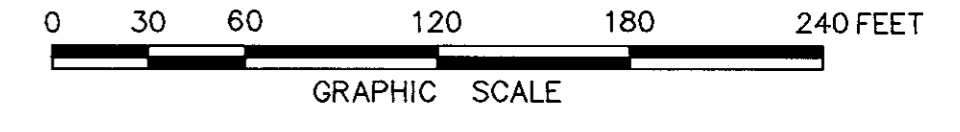


# WYTHE CREEK FARMS SECTION ONE

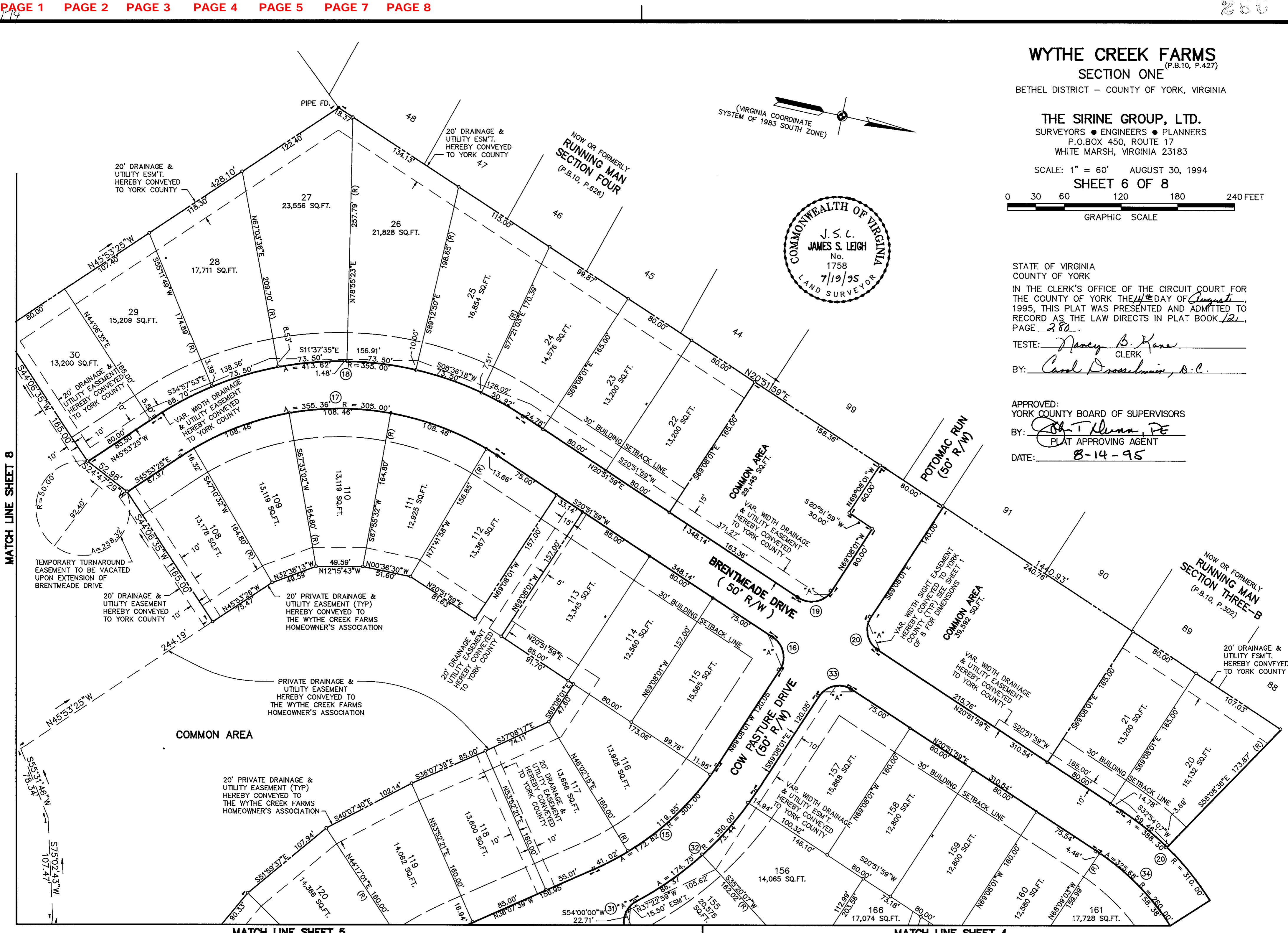
(P.B.10, P.427)  
BETHEL DISTRICT - COUNTY OF YORK, VIRGINIA

**THE SIRINE GROUP, LTD.**  
SURVEYORS • ENGINEERS • PLANNERS  
P.O. BOX 450, ROUTE 17  
WHITE MARSH, VIRGINIA 23183

SCALE: 1" = 60' AUGUST 30, 1994  
**SHEET 6 OF 8**



MATCH LINE SHEET 8



STATE OF VIRGINIA  
COUNTY OF YORK  
IN THE CLERK'S OFFICE OF THE CIRCUIT COURT FOR  
THE COUNTY OF YORK THE 14<sup>th</sup> DAY OF August,  
1995, THIS PLAT WAS PRESENTED AND ADMITTED TO  
RECORD AS THE LAW DIRECTS IN PLAT BOOK 12,  
PAGE 280.  
TESTE: Nancy B. Kane  
CLERK  
BY: Carol Draschman, D.C.  
  
APPROVED:  
YORK COUNTY BOARD OF SUPERVISORS  
BY: John T. Hanna, PE  
PLAT APPROVING AGENT  
DATE: 8-14-95

MATCH LINE SHEET 5

MATCH LINE SHEET 4