

BURNT BRIDGE RUN CONDOMINIUMS

PHASE EIGHTEEN

GRAFTON DISTRICT COUNTY OF YORK, VIRGINIA

SCALE: 1" = 20'


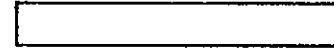

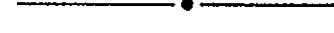
DATE: MAY 11, 1995

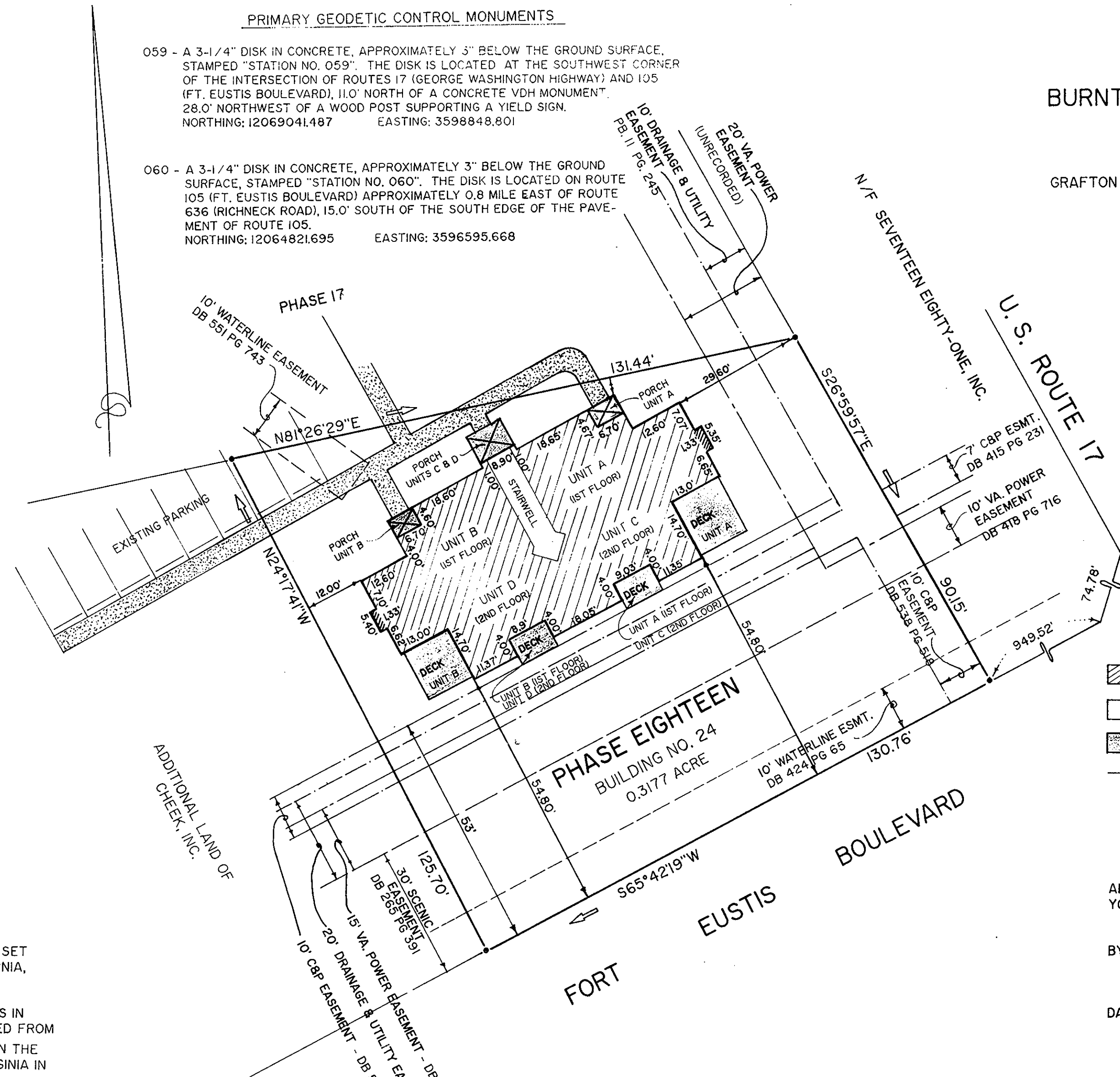
REVISED: MAY 22, 1995

KELLER LAND SURVEYING, P.C.

753D THIMBLE SHOALS BOULEVARD  
NEWPORT NEWS, VIRGINIA 23606  
TELEPHONE: 804-873-2770  
CODE: 94-092

LEGEND

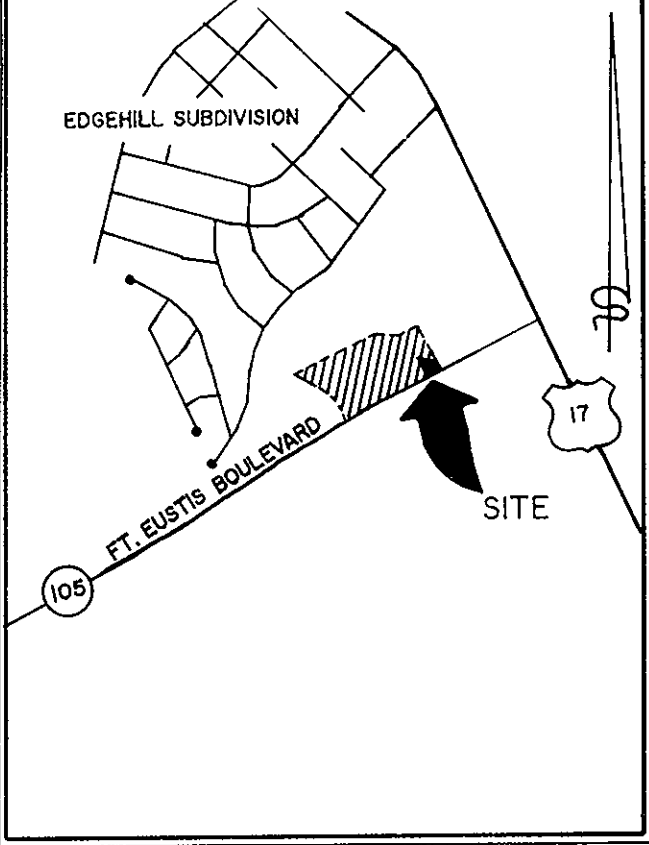
-  UNIT AREA
-  COMMON ELEMENTS
-  LIMITED COMMON ELEMENTS
-  IRON ROD FOUND / SET



PRIMARY GEODETIC CONTROL MONUMENTS

059 - A 3-1/4" DISK IN CONCRETE, APPROXIMATELY 3" BELOW THE GROUND SURFACE, STAMPED "STATION NO. 059". THE DISK IS LOCATED AT THE SOUTHWEST CORNER OF THE INTERSECTION OF ROUTES 17 (GEORGE WASHINGTON HIGHWAY) AND 105 (FT. EUSTIS BOULEVARD), 11.0' NORTH OF A CONCRETE VDH MONUMENT, 28.0' NORTHWEST OF A WOOD POST SUPPORTING A YIELD SIGN.  
NORTHING: 12069041.487 EASTING: 3598848.801

060 - A 3-1/4" DISK IN CONCRETE, APPROXIMATELY 3" BELOW THE GROUND SURFACE, STAMPED "STATION NO. 060". THE DISK IS LOCATED ON ROUTE 105 (FT. EUSTIS BOULEVARD) APPROXIMATELY 0.8 MILE EAST OF ROUTE 636 (RICHNECK ROAD), 15.0' SOUTH OF THE SOUTH EDGE OF THE PAVEMENT OF ROUTE 105.  
NORTHING: 12064821.695 EASTING: 3596595.668



VICINITY MAP  
SCALE: 1" = 2000'

THE PLATTING OF THE CONDOMINIUM SHOWN HEREON IS IN ACCORDANCE WITH THE DESIRES OF THE UNDERSIGNED OWNERS, PROPRIETORS AND TRUSTEES.

Mae A. Cheek, Inc. 6/2/95  
DATE  
KENNETH L. ROBERTS, TRUSTEE (DB 759 PG 465) 6-2-95  
DATE  
PATRICIA E. ROBERTS, TRUSTEE (DB 759 PG 465) 6/2/95  
DATE

I, Dina M. Thomas, A NOTARY PUBLIC IN AND FOR THE CITY/COUNTY OF Newport News, STATE OF VIRGINIA DO HEREBY CERTIFY THAT THE ABOVE NAMED PERSON WHOSE NAME IS SIGNED TO THE FOREGOING WRITING HAS ACKNOWLEDGED THE SAME BEFORE ME IN MY CITY/COUNTY AND STATE AFORESAID.

GIVEN UNDER MY HAND THIS 2nd DAY OF June, 1995.

MY COMMISSION EXPIRES: August 31, 1998

Dina M. Thomas  
NOTARY PUBLIC

TO THE BEST OF MY KNOWLEDGE AND BELIEF, ALL REQUIREMENTS AS SET FORTH IN THE SUBDIVISION ORDINANCE OF THE COUNTY OF YORK, VIRGINIA, HAVE BEEN COMPLIED WITH, INCLUDING A CLOSURE OF NOT LESS THAN 1/20,000.

THIS IS TO CERTIFY THAT THE LAND EMBRACED IN THIS CONDOMINIUM IS IN THE NAME OF CHEEK, INC., A VIRGINIA CORPORATION, AND WAS ACQUIRED FROM R. L. CHEEK BY DEED DATED NOVEMBER 12, 1993 AND DULY RECORDED IN THE CLERKS OFFICE OF THE CIRCUIT COURT OF THE COUNTY OF YORK, VIRGINIA IN DEED BOOK 759, PAGE 462.

I CERTIFY THAT THE MONUMENTS SHOWN ON THIS PLAT WILL BE SET BY JULY 1, 1995

I CERTIFY THAT THIS PLAT IS ACCURATE AND COMPLIES WITH THE PROVISIONS OF SECTION 55-79.58(a) CODE OF VIRGINIA OF 1950 AS AMENDED AND THAT ALL UNITS SHOWN HEREON HAVE BEEN SUBSTANTIALLY COMPLETED.

Edward J. Keller  
EDWARD J. KELLER, L.S.



PHASE EIGHTEEN  
BUILDING NO. 24  
0.3177 ACRE

UTILITY NOTES

1. DRAINAGE AND UTILITY EASEMENTS SHOWN HEREON ARE EXISTING EASEMENTS AS RECORDED IN PLAT BOOK II, PAGE 245 AND IN DEED BOOK 265, PAGE 391.

2. WATER - EACH UNIT WITHIN THIS CONDOMINIUM IS SERVED BY PUBLIC WATER PROVIDED BY THE CITY OF NEWPORT NEWS.

SEWER - EACH UNIT WITHIN THIS CONDOMINIUM IS SERVED BY PUBLIC SEWER PROVIDED BY THE COUNTY OF YORK & H.R.S.D.

NOTES

- ALL BUILDING DIMENSIONS SHOWN HEREON ARE EXTERIOR AND ARE IN FEET.
- THE DESIGNATION OF UNIT AREA IS SUPERCEDED BY THE DECLARATION AND DOES NOT IMPLY THAT EXTERIOR WALLS, BEARING WALLS AND OTHER COMMON ELEMENTS ARE UNIT AREA.

APPROVED  
YORK COUNTY BOARD OF SUPERVISORS

BY: [Signature]  
PLAT APPROVING AGENT

DATE: 6-28-95

THE PROPERTY AS DEPICTED ON THIS PLAT DOES NOT VIOLATE THE PROVISIONS OF THE YORK COUNTY SUBDIVISION ORDINANCE

SIGNED: [Signature]  
TITLE: DIR. OF ENVIRONMENTAL & DEVELOPMENT SERVICES  
DATE: 6-28-95

STATE OF VIRGINIA  
COUNTY OF YORK

IN THE CLERK'S OFFICE OF THE CIRCUIT COURT FOR THE COUNTY OF YORK THE 29th DAY OF August 1995, THIS MAP WAS PRESENTED AND ADMITTED TO RECORD AS THE LAW DIRECTS IN PLAT BOOK 12 AT PAGE 288.

TESTE: Nancy B. Kane  
CLERK

BY: Carol Drosselmaier, Deputy Clerk  
NB 860 Page 214