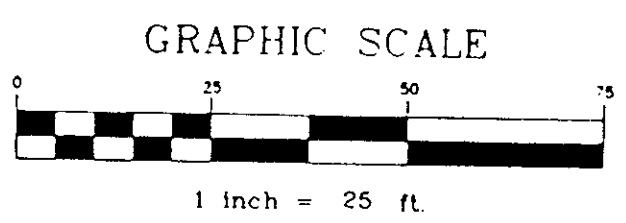
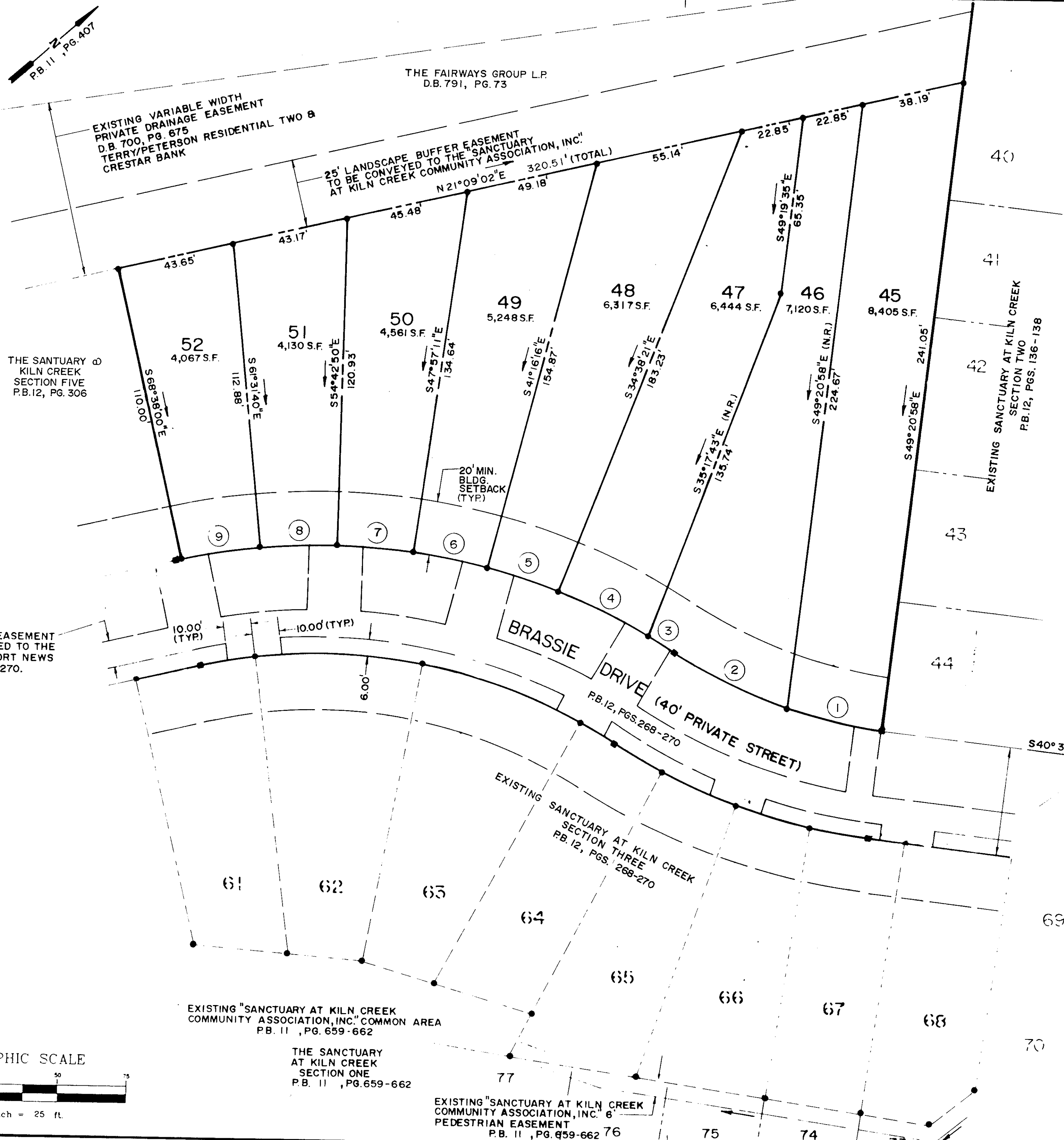
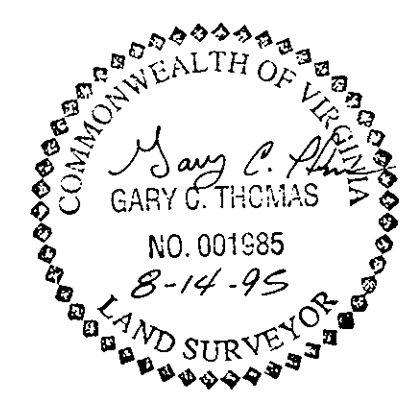


PLAT OF SUBDIVISION  
 THE VILLAGES OF KILN CREEK  
**THE SANCTUARY  
 AT KILN CREEK**  
 SECTION FOUR  
 SINGLE FAMILY ATTACHED 1  
 YORK COUNTY, VIRGINIA

DATE: 8/14/95 SHEET 2 OF 2 SCALE: 1" = 25'

**SA SLEDD & ASSOCIATES, P.C.**  
 ENGINEERS PLANNERS SURVEYORS  
 11832 ROCK LANDING DRIVE, SUITE 203  
 NEWPORT NEWS, VIRGINIA 23608  
 (804) 873-3386



APPROVED:  
 YORK COUNTY BOARD OF SUPERVISORS  
 BY: John Thomas, PE  
 PLAT APPROVING AGENT  
 DATE: 1-17-96

STATE OF VIRGINIA  
 COUNTY OF YORK

IN THE CLERK'S OFFICE OF THE CIRCUIT COURT FOR THE COUNTY OF YORK, THE 18 DAY OF January, 19 96  
 THIS MAP WAS PRESENTED AND ADMITTED TO RECORD AS THE LAW DIRECTS IN PLAT BOOK 12, PAGE 330.

TESTE: Nancy B. Kane  
 CLERK

BY: Dorinda R. Donnell