

CURVE DATA TABLE

CURVE	DELTA	RADIUS	LENGTH	TANGENT	CHORD	BEARING
1	02°26'05"	910.00'	38.67'	19.34'	38.67'	S65°23'48"E
2	92°19'47"	25.00'	40.29'	26.04'	36.07'	S18°00'52"E
3	94°47'48"	25.00'	41.36'	27.19'	36.80'	N75°32'56"E
4	15°26'21"	910.00'	245.21'	123.35'	244.47'	S49°20'01"E
5	07°07'34"	910.00'	113.18'	56.66'	113.11'	S60°36'58"E

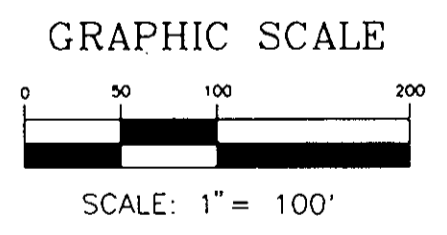
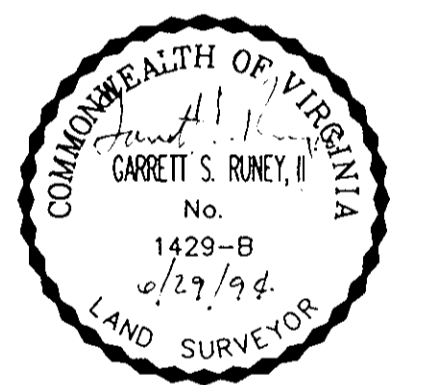
SUBDIVISION  
OF THE PROPERTY OF  
KILN CREEK GOLF &  
COUNTRY CLUB LIMITED PARTNERSHIP  
**PARCEL G**  
YORK COUNTY, VIRGINIA

DATE: MAR.25, 1994      SHEET 2 OF 2      SCALE: 1"=100'

**SRA** SLEDD, RUNEY & ASSOCIATES, P.C.  
ENGINEERS PLANNERS SURVEYORS  
11832 ROCK LANDING DRIVE, SUITE 203  
NEWPORT NEWS, VIRGINIA 23606  
(804) 873-3386

LEGEND

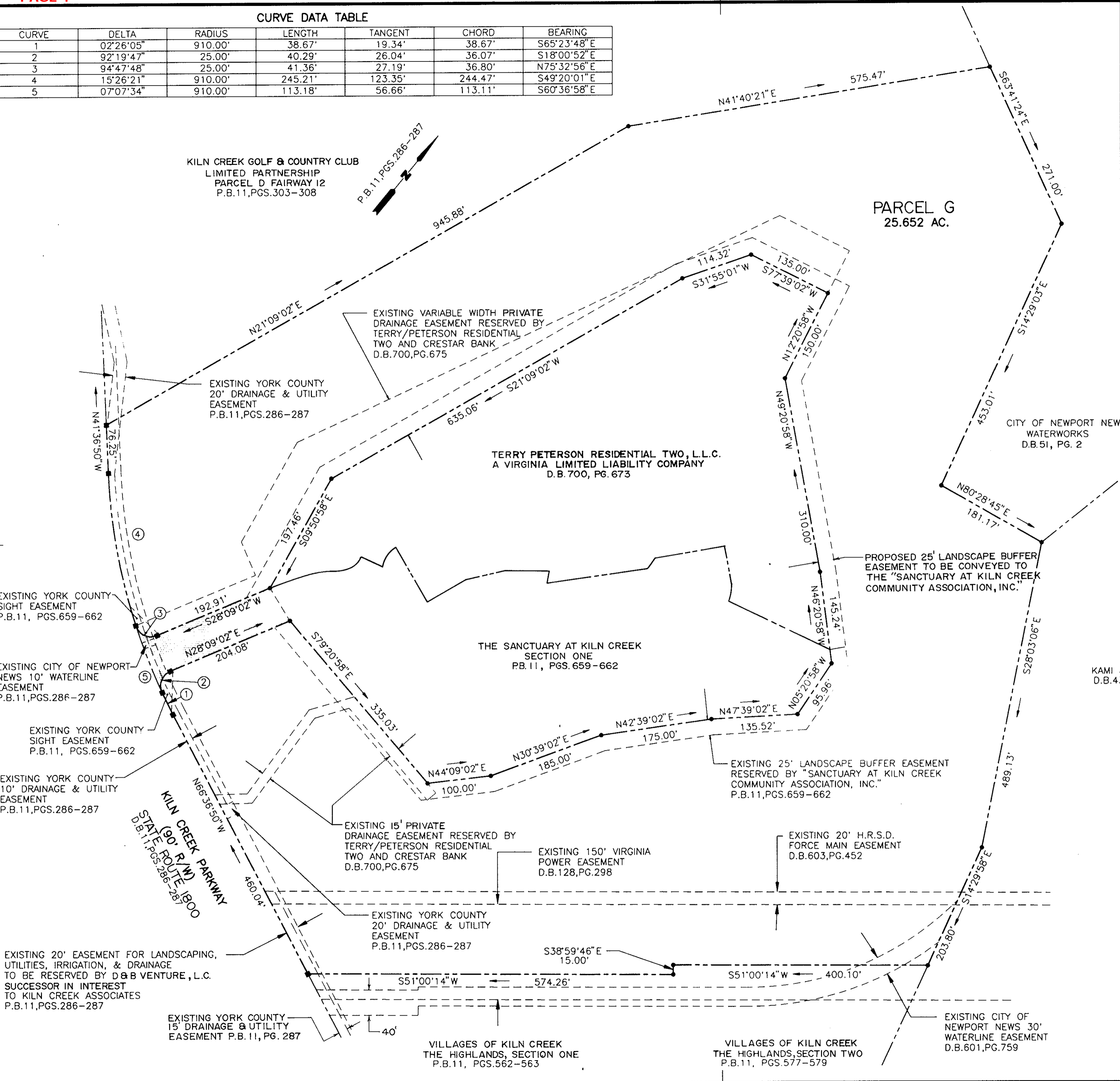
- INDICATES CONC. MON. TO BE SET
- INDICATES IRON PIPE TO BE SET
- DENOTES NON-EXCLUSIVE INGRESS/EGRESS EASEMENT RESERVED BY D & B VENTURE, L.C., SUCCESSOR IN INTEREST TO KILN CREEK LIMITED PARTNERSHIP P.B.11, PG.407



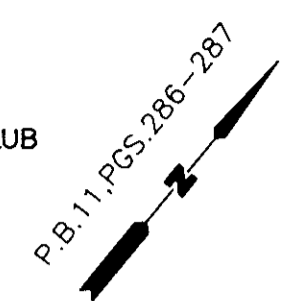
KAMI J. GLOVER  
D.B.436, PG.543

APPROVED:  
YORK COUNTY BOARD OF SUPERVISORS  
BY: John T. Danna, PE  
PLAT APPROVING AGENT  
DATE: 12-22-95

STATE OF VIRGINIA  
COUNTY OF YORK  
IN THE CLERK'S OFFICE OF THE CIRCUIT COURT FOR THE COUNTY OF YORK, THE 7 DAY OF February 1996  
THIS MAP WAS PRESENTED AND ADMITTED TO RECORD AS THE LAW DIRECTS IN PLAT BOOK 12, PAGE 343.  
TESTE: Nancy B. Kane  
CLERK  
BY: Debra OR Darnouse



KILN CREEK GOLF & COUNTRY CLUB  
LIMITED PARTNERSHIP  
PARCEL D FAIRWAY I2  
P.B.11, PGS.303-308



PARCEL G  
25.652 AC.

EXISTING VARIABLE WIDTH PRIVATE  
DRAINAGE EASEMENT RESERVED BY  
TERRY/PETERSON RESIDENTIAL  
TWO AND CRESTAR BANK  
D.B.700, PG.675

EXISTING YORK COUNTY  
20' DRAINAGE & UTILITY  
EASEMENT  
P.B.11, PGS.286-287

TERRY PETERSON RESIDENTIAL TWO, L.L.C.  
A VIRGINIA LIMITED LIABILITY COMPANY  
D.B. 700, PG. 673

CITY OF NEWPORT NEWS  
WATERWORKS  
D.B.51, PG. 2

PROPOSED 25' LANDSCAPE BUFFER  
EASEMENT TO BE CONVEYED TO  
THE "SANCTUARY AT KILN CREEK  
COMMUNITY ASSOCIATION, INC."

THE SANCTUARY AT KILN CREEK  
SECTION ONE  
PB.11, PGS.659-662

EXISTING YORK COUNTY  
SIGHT EASEMENT  
P.B.11, PGS.659-662

EXISTING CITY OF NEWPORT  
NEWS 10' WATERLINE  
EASEMENT  
P.B.11, PGS.286-287

EXISTING YORK COUNTY  
SIGHT EASEMENT  
P.B.11, PGS.659-662

EXISTING YORK COUNTY  
10' DRAINAGE & UTILITY  
EASEMENT  
P.B.11, PGS.286-287

KILN CREEK PARKWAY  
STATE ROUTE 1900  
D.B.11, PGS.286-287

EXISTING 15' PRIVATE  
DRAINAGE EASEMENT RESERVED BY  
TERRY/PETERSON RESIDENTIAL  
TWO AND CRESTAR BANK  
D.B.700, PG.675

EXISTING 150' VIRGINIA  
POWER EASEMENT  
D.B.128, PG.298

EXISTING 20' H.R.S.D.  
FORCE MAIN EASEMENT  
D.B.603, PG.452

EXISTING 25' LANDSCAPE BUFFER EASEMENT  
RESERVED BY "SANCTUARY AT KILN CREEK  
COMMUNITY ASSOCIATION, INC."  
P.B.11, PGS.659-662

EXISTING YORK COUNTY  
20' DRAINAGE & UTILITY  
EASEMENT  
P.B.11, PGS.286-287

EXISTING 20' EASEMENT FOR LANDSCAPING,  
UTILITIES, IRRIGATION, & DRAINAGE  
TO BE RESERVED BY D & B VENTURE, L.C.  
SUCCESSOR IN INTEREST  
TO KILN CREEK ASSOCIATES  
P.B.11, PGS.286-287

EXISTING YORK COUNTY  
15' DRAINAGE & UTILITY  
EASEMENT P.B. 11, PG. 287

VILLAGES OF KILN CREEK  
THE HIGHLANDS, SECTION ONE  
P.B.11, PGS.562-563

VILLAGES OF KILN CREEK  
THE HIGHLANDS, SECTION TWO  
P.B.11, PGS.577-579

EXISTING CITY OF  
NEWPORT NEWS 30'  
WATERLINE EASEMENT  
D.B.601, PG.759