

WYTHE CREEK FARMS

(D.B.775, P.375; P.B.10, P.427)

SECTION TWO

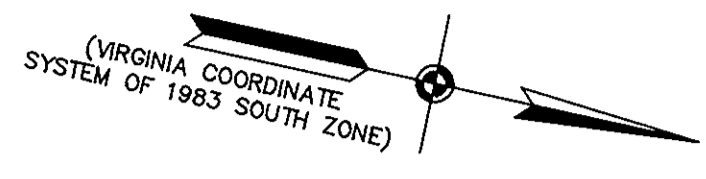
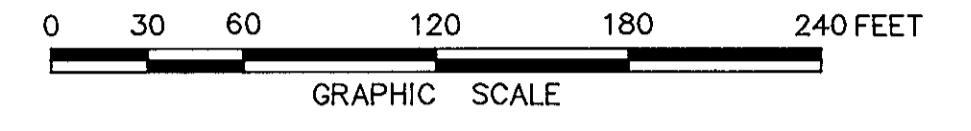
BETHEL DISTRICT - COUNTY OF YORK, VIRGINIA

THE SIRINE GROUP, LTD.

SURVEYORS • ENGINEERS • PLANNERS
P.O. BOX 450, ROUTE 17
WHITE MARSH, VIRGINIA 23183

SCALE: 1" = 60' AUGUST 4, 1995

SHEET 2 OF 3



NOW OR FORMERLY
VIRGINIA ENTERPRISES, INC.,
A VIRGINIA CORPORATION
(D.B.775, P.375)
(FUTURE DEVELOPMENT)

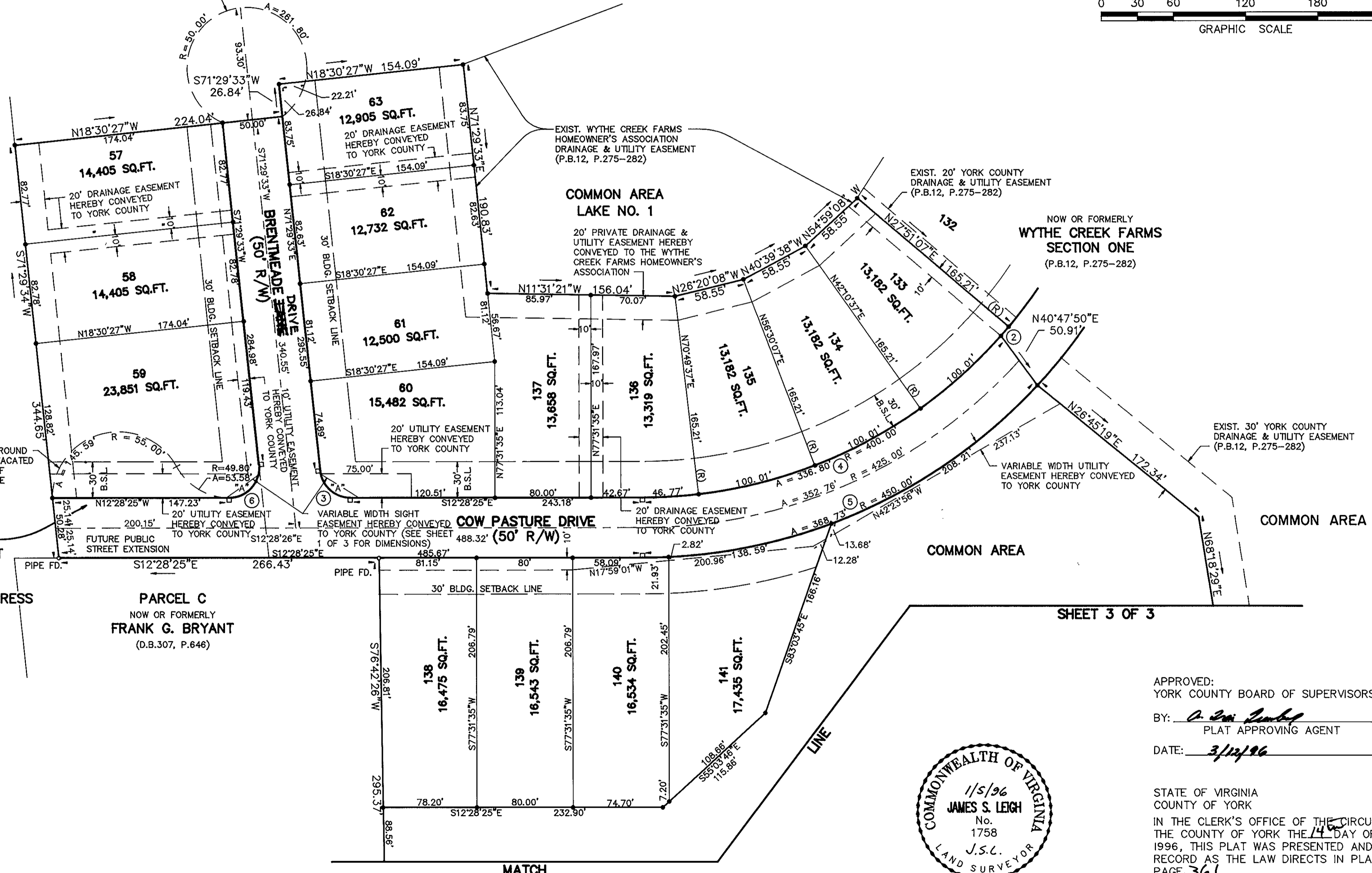
TEMPORARY TURNAROUND
EASEMENT TO BE VACATED
UPON EXTENSION OF
BRENTMEADE DRIVE

NOW OR FORMERLY
WILLIE HOWARD ESTATE
(D.B.32, P.429)

TEMPORARY TURNAROUND
EASEMENT TO BE VACATED
UPON EXTENSION OF
COW PASTURE DRIVE

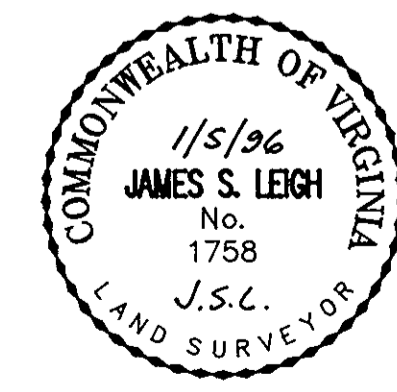
THIS RIGHT-OF-WAY IS
PLATTED WITH THE INTENT
OF BEING EXTENDED AND
CONTINUED IN ORDER TO
PROVIDE INGRESS AND EGRESS
TO AND FROM ADJOINING
PROPERTIES.

PARCEL C
NOW OR FORMERLY
FRANK G. BRYANT
(D.B.307, P.646)



MATCH

SHEET 3 OF 3



APPROVED:
YORK COUNTY BOARD OF SUPERVISORS
BY: [Signature]
PLAT APPROVING AGENT
DATE: 3/12/96

STATE OF VIRGINIA
COUNTY OF YORK
IN THE CLERK'S OFFICE OF THE CIRCUIT COURT FOR
THE COUNTY OF YORK THE 14 DAY OF March,
1996, THIS PLAT WAS PRESENTED AND ADMITTED TO
RECORD AS THE LAW DIRECTS IN PLAT BOOK 12,
PAGE 361.

TESTE: Nancy B. Kane, CLERK
CLERK
BY: [Signature]