

13th June 96  
239

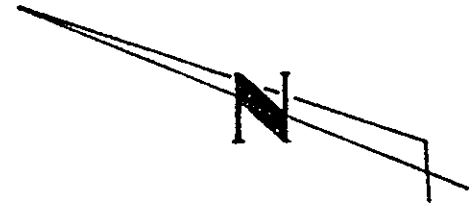
Approved York Co  
and recorded

376

Plat Book No. 12 Page 376

NOW OR FORMERLY  
BOOKER

S 05° 50' 30" E 58.00'  
S 19° 41' 50" E 54.11'



309.29'  
4.35'  
0.11'

YORK COUNTY  
APPROVED FOR RECORDATION  
BY: John I. Curran  
TITLE: DIRECTOR EDS  
DATE: MAY 29, 1996

34,022 S.F.  
OR  
0.7810 AC.

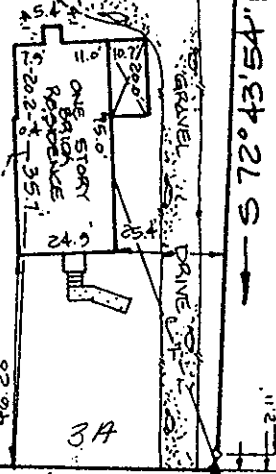
NOW OR FORMERLY  
LOCKOWITZ  
(D.B. 413, Pg. 599)

NOW OR FORMERLY  
HOWELL  
(Pg. 101, 279)

Filed in the Clerk's Office, Circuit Court, York Co., Va.  
the 29 day of May 1996  
4:05 PM  
Teste:  
Nancy B. Kane, Clerk  
D.C.

0.51 MILE TO  
FORT ELUSTIS BLD.  
(ROUTE #105)

24-111

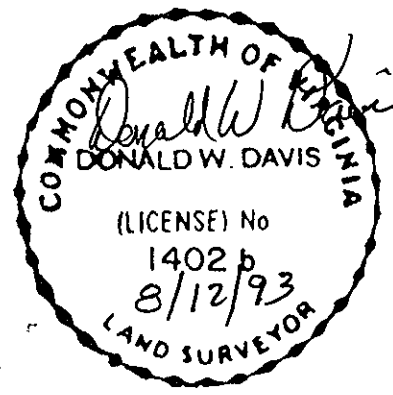


115.68' P-T-Tv N 13° 45' 31" E 116.53' P-T-Tv N 19° 22' 00" W 1.98' P-T-Tv 1.20'

### GEORGE WASHINGTON MEMORIAL HIGHWAY (U.S. ROUTE #17) (110' R/W)

NOTE : PROPERTY SHOWN HEREON IS LOCATED  
IN ZONE X AS SHOWN ON FLOOD  
INSURANCE RATE MAP COMMUNITY-  
PANEL NUMBER 510182 0036 B,  
EFFECTIVE DATE : DECEMBER 16, 1988.

- SYMBOLS:**
- PIPE FOUND
  - PIPE SET
  - ROD FOUND
  - CONC. MONUMENT



I, Donald W. Davis  
HEREBY CERTIFY THAT THE  
SURVEY REPRESENTED BY THIS  
PLAT WAS MADE BY ME ON  
THIS DATE AND IS CORRECT  
TO THE BEST OF MY KNOW-  
LEDGE AND BELIEF THERE ARE  
NO ENCROACHMENTS OF BUILD-  
INGS UNLESS SHOWN HEREON.  
**DAVIS & ASSOCIATES**  
SURVEYORS & PLANNERS  
YORK COUNTY, VIRGINIA

JOB LOCATION # 7438 (U.S. ROUTE #17)  
GEORGE WASHINGTON MEMORIAL HIGHWAY  
PLAT OF THE PROPERTY OF:  
**EARL CHISMAN**  
**PARCEL OF LAND**  
CONTAINING: 34,022 S.F. OR 0.7810 AC.  
COUNTY OF YORK, VIRGINIA  
D.B. 413, Pg. 599  
W.B. 50, Pg. 105