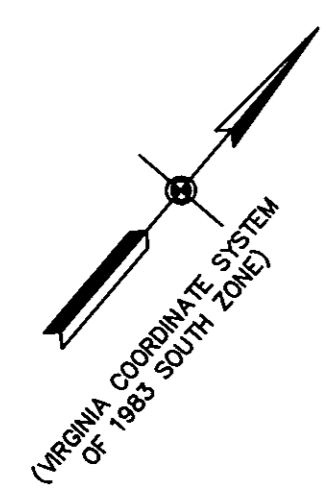
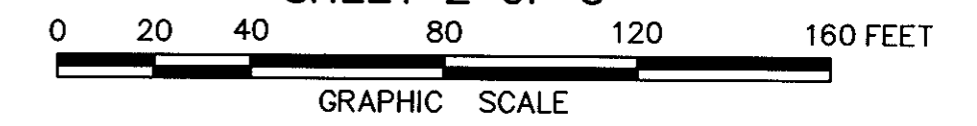


GLEN LAUREL SECTION EIGHT

GRAFTON DISTRICT - COUNTY OF YORK, VIRGINIA

THE SIRINE GROUP, LTD.
SURVEYORS • ENGINEERS • PLANNERS
P.O. BOX 450, ROUTE 17
WHITE MARSH, VIRGINIA 23183

SCALE: 1" = 40' APRIL 1, 1996
SHEET 2 OF 3



NOW OR FORMERLY
GLEN LAUREL SECTION SEVEN
(P.B.12, P.372-373)

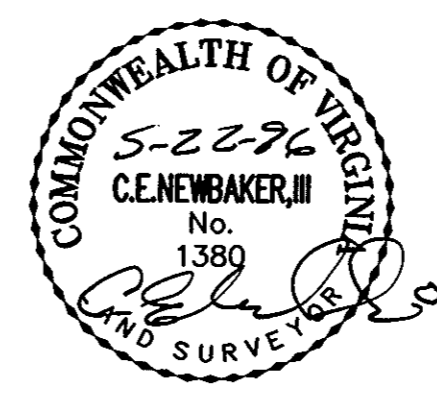
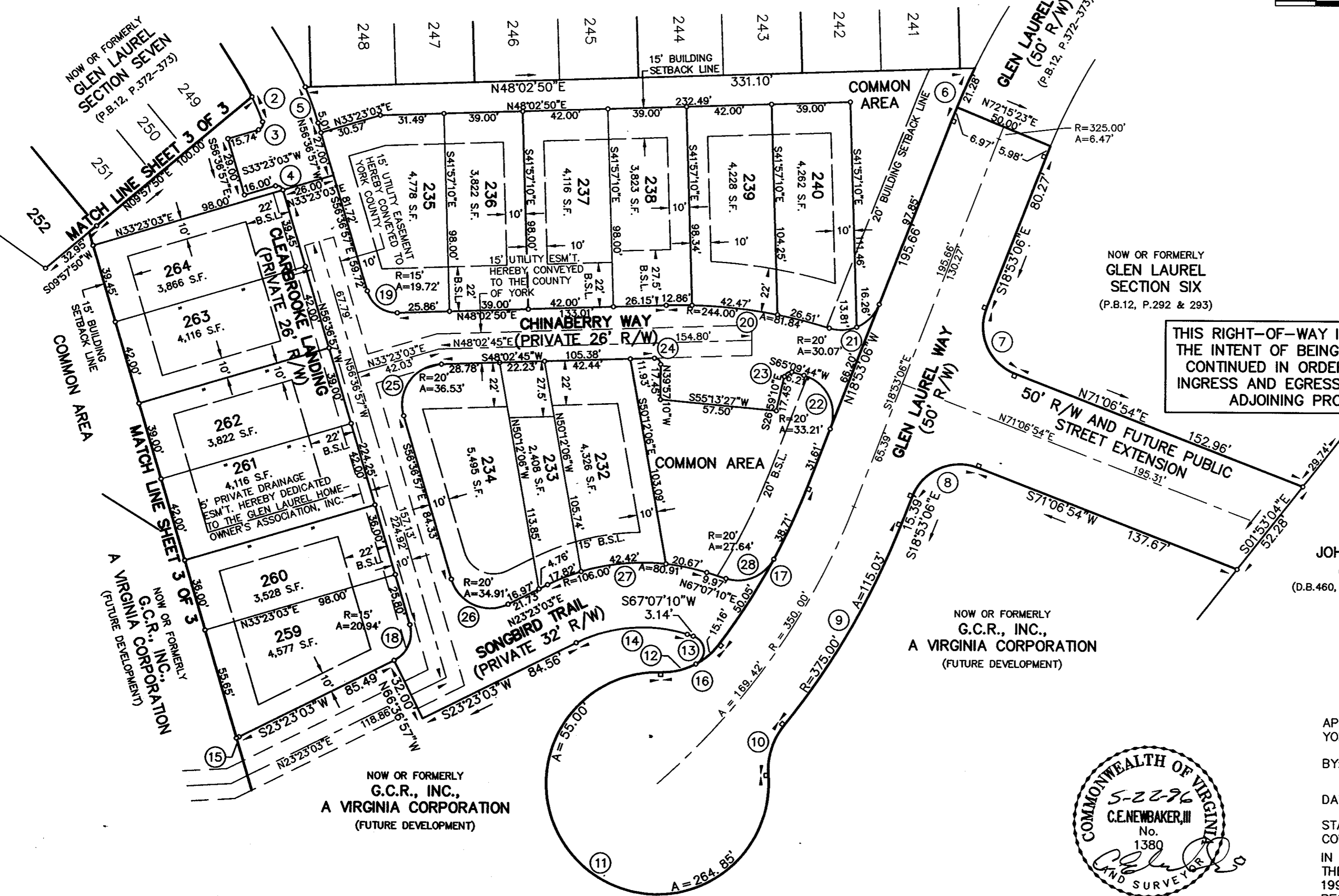
NOW OR FORMERLY
GLEN LAUREL SECTION SIX
(P.B.12, P.292 & 293)

THIS RIGHT-OF-WAY IS PLATTED WITH THE INTENT OF BEING EXTENDED AND CONTINUED IN ORDER TO PROVIDE INGRESS AND EGRESS TO AND FROM ADJOINING PROPERTIES.

NOW OR FORMERLY
JOHN GOODE MARTIN, JR. & BETTY L. MARTIN
(D.B.460, P.115; W.B.25, P.237; D.B.207, P.47)

NOW OR FORMERLY
G.C.R., INC., A VIRGINIA CORPORATION
(FUTURE DEVELOPMENT)

NOW OR FORMERLY
G.C.R., INC., A VIRGINIA CORPORATION
(FUTURE DEVELOPMENT)



APPROVED:
YORK COUNTY BOARD OF SUPERVISORS
BY: [Signature]
PLAT APPROVING AGENT
DATE: 8-12-96

STATE OF VIRGINIA
COUNTY OF YORK
IN THE CLERK'S OFFICE OF THE CIRCUIT COURT FOR THE COUNTY OF YORK THE 13 DAY OF August, 1996, THIS PLAT WAS PRESENTED AND ADMITTED TO RECORD AS THE LAW DIRECTS IN PLAT BOOK 12, PAGE 395.

TESTE: Nancy B. Kane
CLERK
BY: Carol Donnell, Deputy Clerk