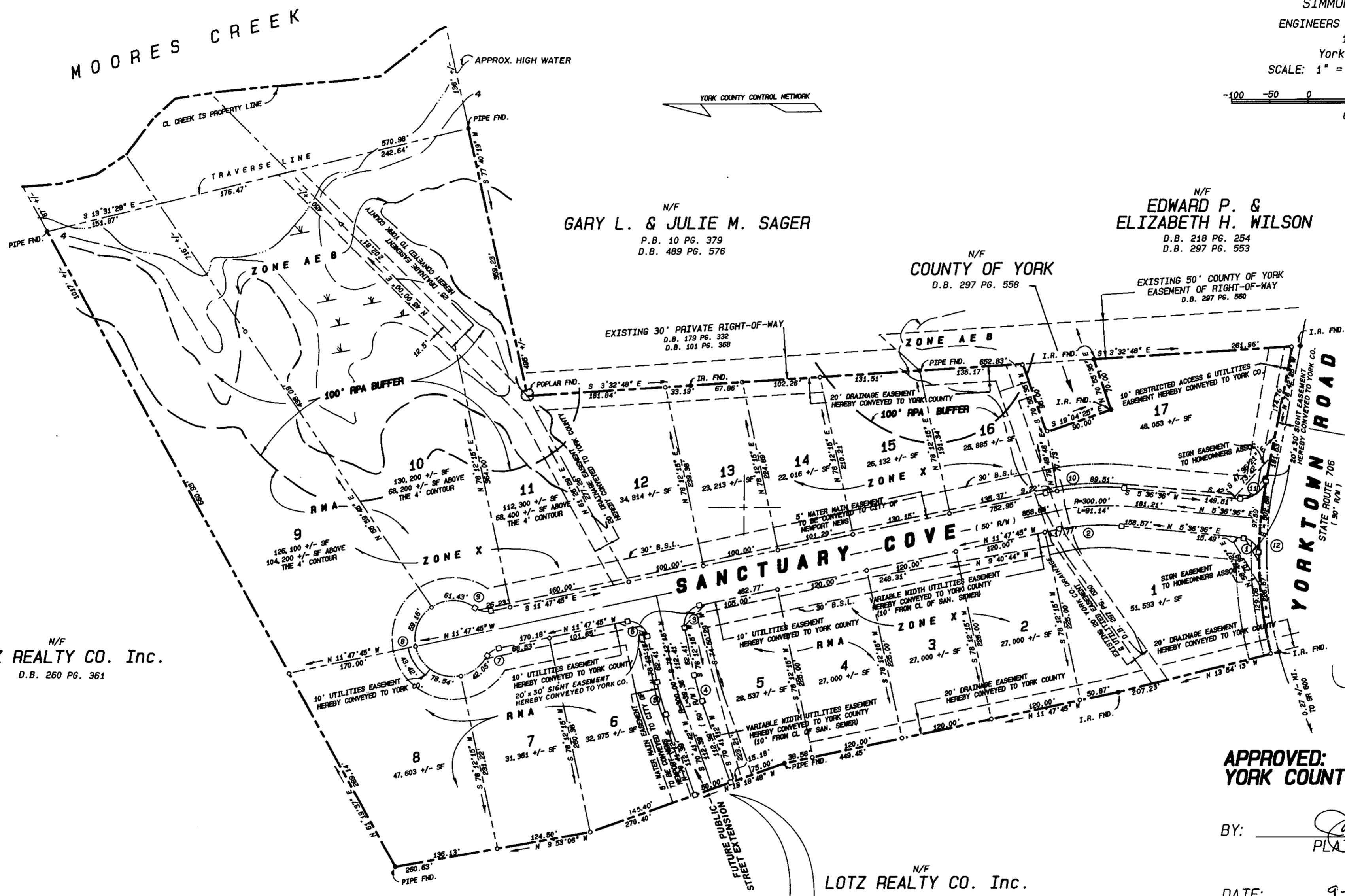


PLAT OF SUBDIVISION OF
HERON'S WALK
 BETHEL DISTRICT, COUNTY OF YORK, VIRGINIA
 SIMMONS NEWSOME, P.C.
 ENGINEERS SURVEYORS PLANNERS
 110A Dare Road
 Yorktown, Virginia 23692
 SCALE: 1" = 100' DATE: JULY 30, 1996
 GRAPHIC SCALE
 SHEET 2 of 2



N/F
LOTZ REALTY CO. Inc.
 D.B. 260 PG. 361

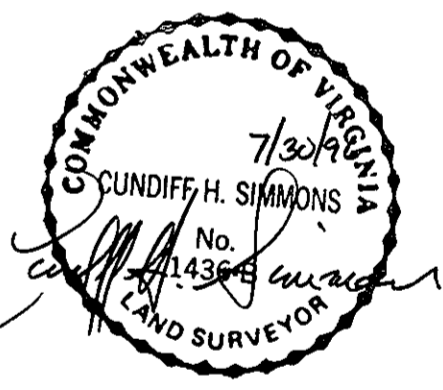
N/F
GARY L. & JULIE M. SAGER
 P.B. 10 PG. 379
 D.B. 489 PG. 576

N/F
EDWARD P. & ELIZABETH H. WILSON
 D.B. 218 PG. 254
 D.B. 297 PG. 553

N/F
COUNTY OF YORK
 D.B. 297 PG. 558

LEGEND
 ---●--- Iron Pipe Found
 ---○--- Iron Pipe Set
 ---I.R.--- Iron Rod Found
 ---□--- Monument Set
 RPA = Resource Protection Area
 RMA = Resource Management Area

10' STRIP HEREBY DEDICATED TO THE COMMONWEALTH OF VIRGINIA, DEPT. OF TRANSPORTATION, FOR RIGHT-OF-WAY PURPOSES



APPROVED:
YORK COUNTY BOARD OF SUPERVISORS

BY: John T. Dunn, PE
 PLAT APPROVING AGENT

DATE: 9-26-96

N/F
LOTZ REALTY CO. Inc.
 D.B. 254 PG. 190
 D.B. 361 PG. 535

This Right-of-Way is platted with the intent of being extended and continued in order to provide ingress and egress to and from adjoining properties.

CURVE TABLE						
No.	DELTA	RADIUS	ARC	TANGENT	CHORD	CH. BRG.
1	84 33' 53"	25.00'	36.90'	22.73'	33.64'	N 47 53' 33" E
2	17 24' 21"	275.00'	83.54'	42.10'	83.22'	N 03 05' 35" W
3	90 00' 00"	25.00'	39.27'	25.00'	35.36'	N 56 47' 45" W
4	07 31' 03"	275.00'	36.08'	18.07'	36.06'	S 74 26' 43" W
5	07 31' 03"	325.00'	42.64'	21.35'	42.61'	N 74 26' 43" E
6	90 00' 00"	25.00'	39.27'	25.00'	35.36'	N 33 12' 15" E
7	48 11' 23"	25.00'	21.03'	11.18'	20.41'	N 35 53' 26" W
8	276 22' 46"	50.00'	241.18'	∞	66.67'	S 78 12' 15" W
9	48 11' 23"	25.00'	21.03'	11.18'	20.41'	S 12 17' 56" W
10	17 24' 21"	325.00'	98.73'	49.75'	98.35'	S 03 05' 35" E
11	84 19' 01"	35.00'	51.51'	31.69'	46.98'	S 36 32' 54" E
12	25 49' 31"	502.88'	226.67'	115.29'	224.75'	S 88 22' 49" W

STATE OF VIRGINIA
COUNTY OF YORK
 In the Clerk's Office of the Circuit Court for the County of York the 27th day of Sept, 1996 this map was presented and admitted to record as the law directs in PLAT BOOK 12 at PAGE 409
 TESTE: Marcy B. Kane
 Clerk
 BY: Dathaine Bender, DC
 0B 916, P. 549