

GLEN LAUREL

SECTION NINE

GRAFTON DISTRICT - COUNTY OF YORK, VIRGINIA

THE SIRINE GROUP, LTD.

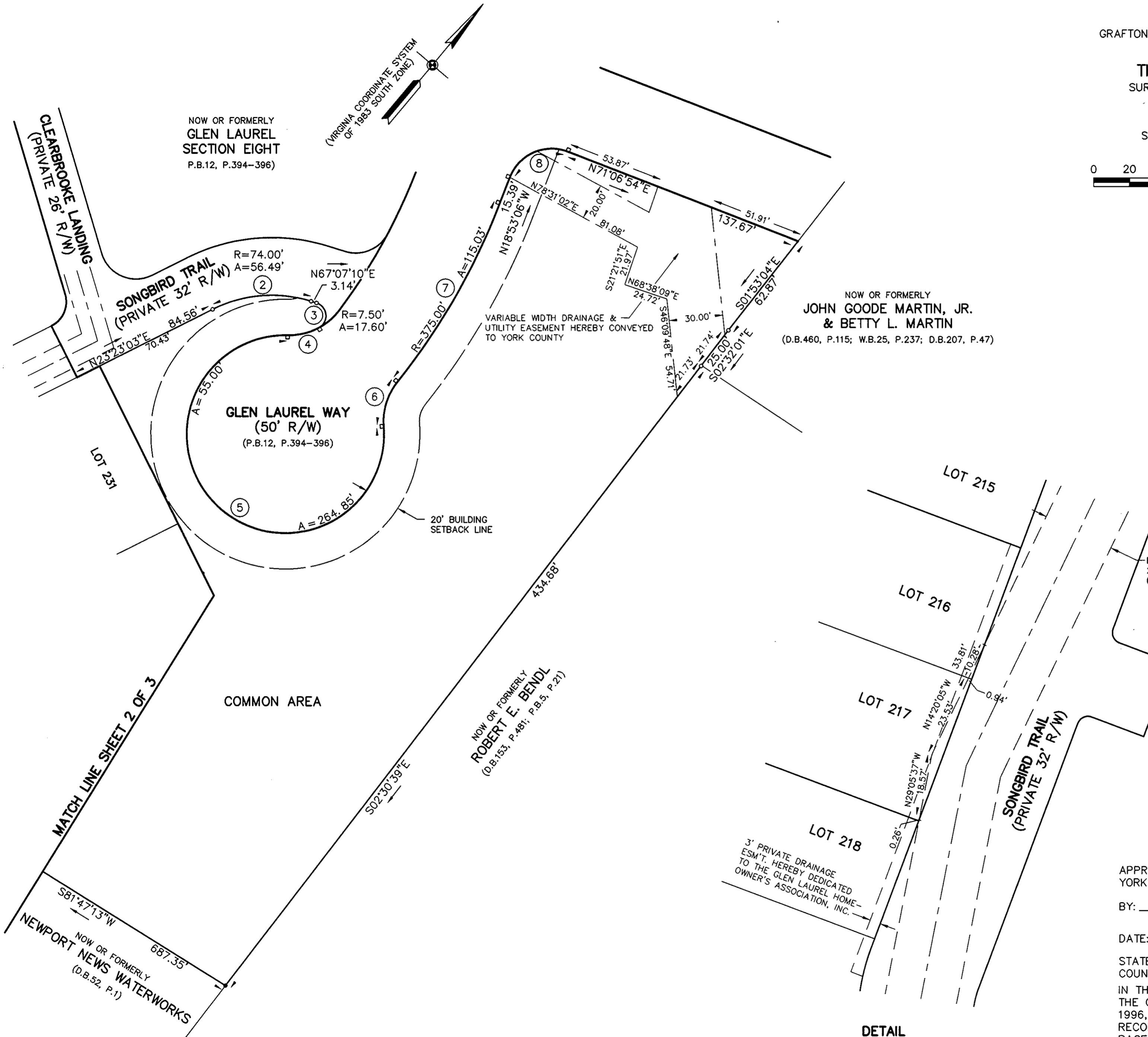
SURVEYORS • ENGINEERS • PLANNERS
P.O. BOX 450, ROUTE 17
WHITE MARSH, VIRGINIA 23183

SCALE: 1" = 40' MAY 6, 1996

SHEET 3 OF 3

0 20 40 80 120 160 FEET

GRAPHIC SCALE



NOW OR FORMERLY
GLEN LAUREL
SECTION EIGHT
P.B.12, P.394-396

NOW OR FORMERLY
JOHN GOODE MARTIN, JR.
& BETTY L. MARTIN
(D.B.460, P.115; W.B.25, P.237; D.B.207, P.47)

NOW OR FORMERLY
ROBERT E. BENDL
(D.B.153, P.481; P.B.3, P.21)

EXISTING YORK COUNTY
20' UTILITY EASEMENT
(P.B.12, P.394-396)



APPROVED:
YORK COUNTY BOARD OF SUPERVISORS

BY: John T. Quinn, PE
PLAT APPROVING AGENT

DATE: 9-26-96

STATE OF VIRGINIA
COUNTY OF YORK

IN THE CLERK'S OFFICE OF THE CIRCUIT COURT FOR
THE COUNTY OF YORK THE 11 DAY OF Oct
1996, THIS PLAT WAS PRESENTED AND ADMITTED TO
RECORD AS THE LAW DIRECTS IN PLAT BOOK 12
PAGE 412.

TESTE: Nancy B. Kase, Clerk
CLERK

BY: [Signature]

DETAIL
SCALE 1" = 20'