

SECOND FLOOR PLAN VIEW

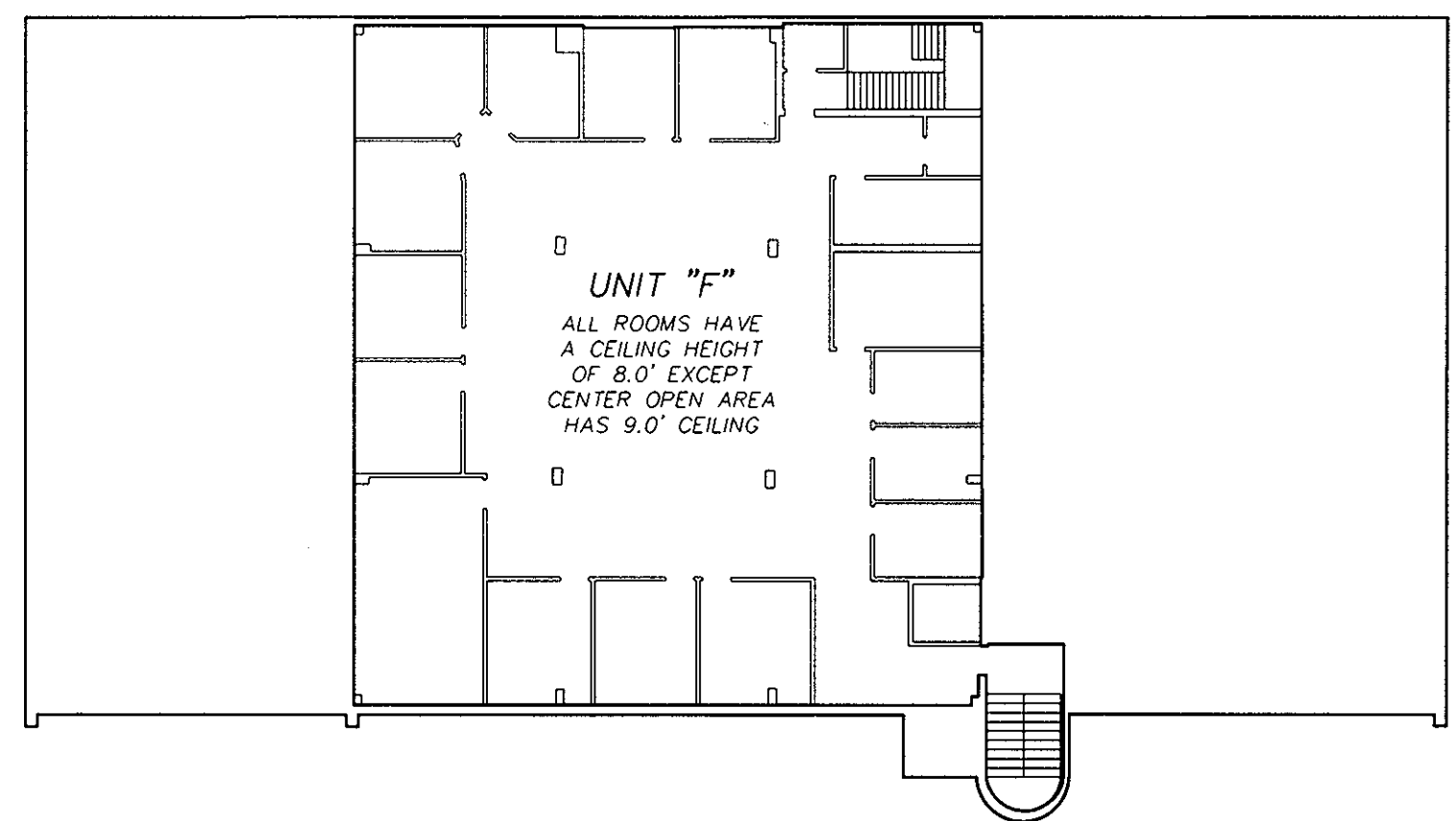
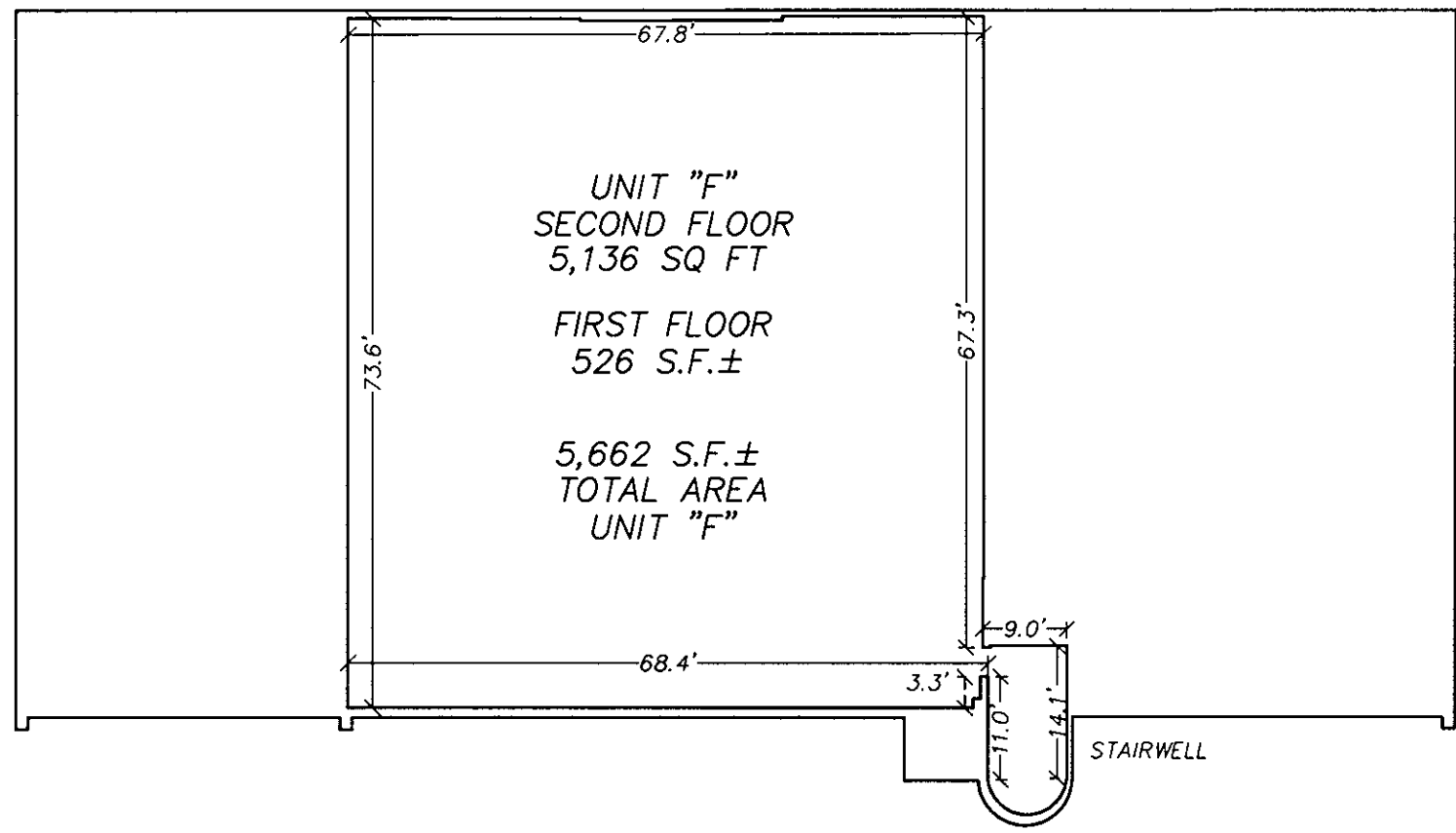
I DO HEREBY CERTIFY THAT I HAVE SURVEYED THE SUBMITTED LAND AND DO FURTHER CERTIFY THAT TO THE BEST OF MY KNOWLEDGE AND BELIEF, THIS PLAT SHOWING LOCATION AND DIMENSIONS OF THE SUBMITTED LAND IS ACCURATE AND THE PLAT COMPLIES WITH THE PROVISIONS OF SECTION 55-79.58 (A) OF THE CODE OF VIRGINIA AS AMENDED. ALL UNITS HAVE BEEN SUBSTANTIALLY COMPLETED.

SECOND FLOOR PLAN VIEW

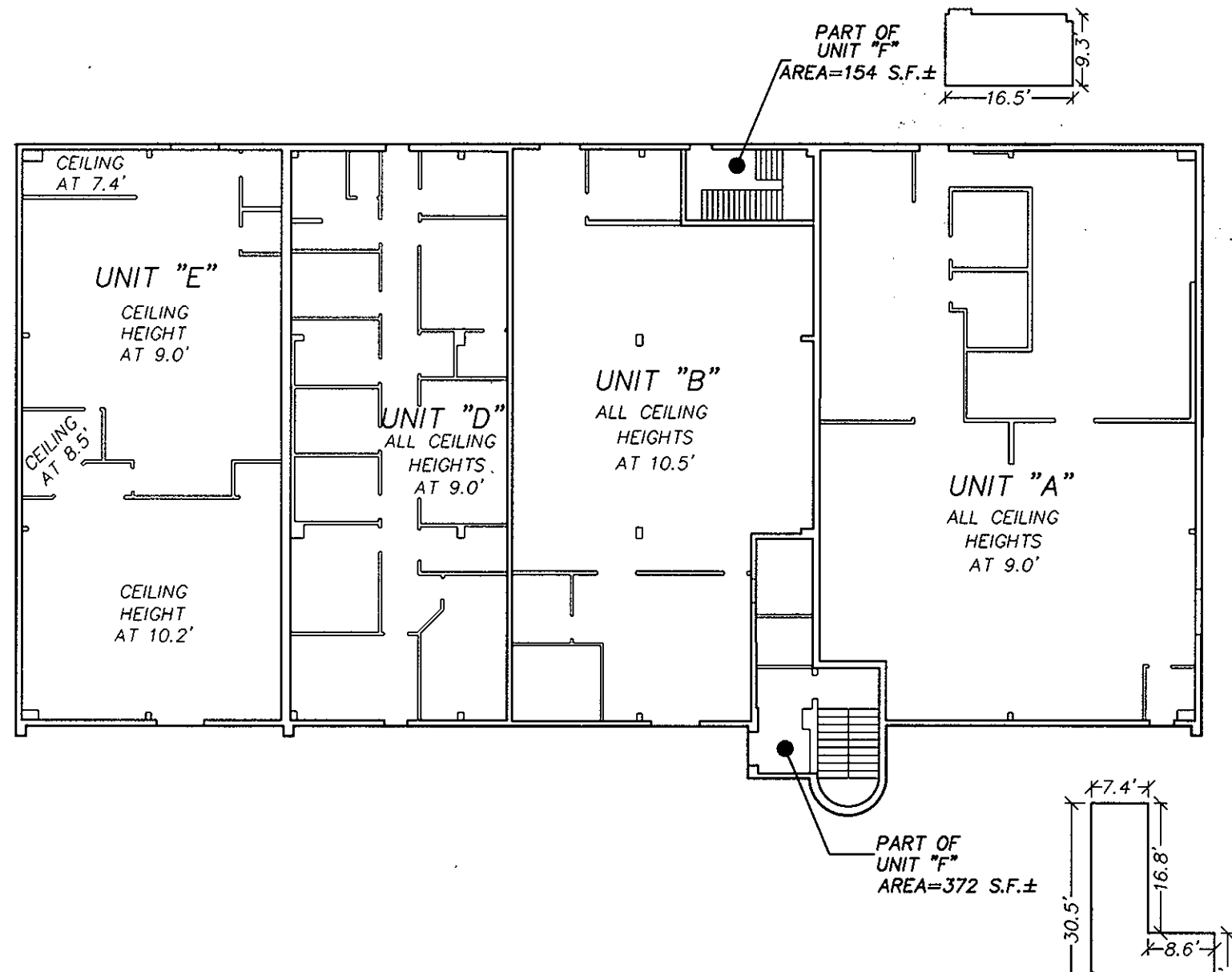
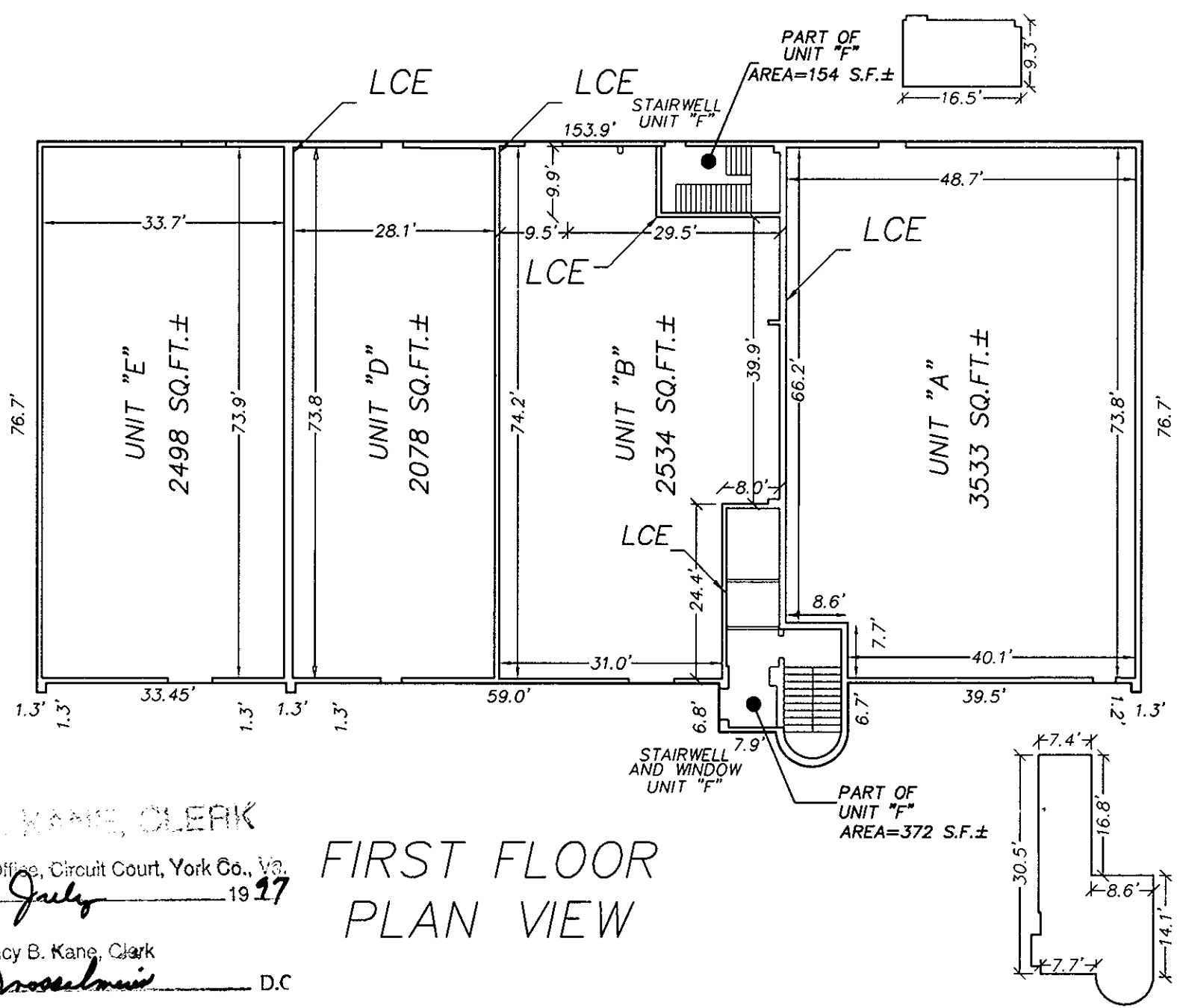
AES CONSULTING ENGINEERS

Ronald W. Eads - 6-2-97
RONALD W. EADS, L.S. #1948

John Decker, PE
Sub-agent
7/16/97

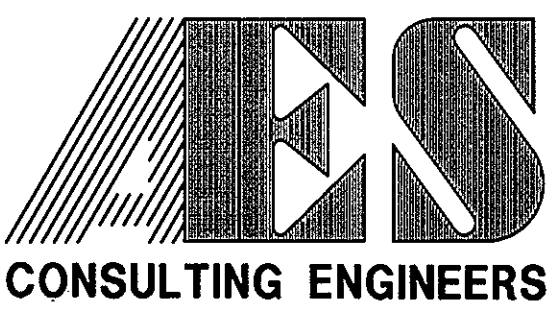


FIRST FLOOR PLAN VIEW



NANCY B. KANE, CLERK
Filed in the Clerk's Office, Circuit Court, York Co., Va.
the 18 day of July 19 97
Teste: *Nancy B. Kane, Clerk*
Carol Drosselmann D.C.

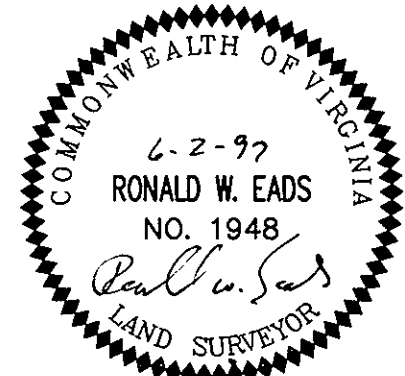
FIRST FLOOR PLAN VIEW



5248 Olde Towne Road, Suite 1
Williamsburg, Virginia 23188
(757) 253-0040
Fax (757) 220-8994

EXHIBIT 2
PLAT OF CONDOMINIUM
TABB LAKES CENTER COMMERCIAL CONDOMINIUMS
UNITS A, B, D, E & F
OWNER/DEVELOPER: TABB CENTER DEVELOPERS

KILN CREEK DISTRICT YORK COUNTY VIRGINIA



No.	DATE	REVISION / COMMENT / NOTE	BY

Designed 000	Drawn TGP
Scale 1"=20'	Date 06/02/97
Project No. 8166-1	
Drawing No. 2 OF 3	