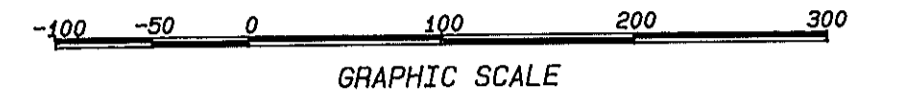


PLAT OF SUBDIVISION OF
TABB MEADOWS
BETHEL DISTRICT, COUNTY OF YORK, VIRGINIA
SIMMONS NEWSOME, P.C.

ENGINEERS SURVEYORS PLANNERS
110A Dare Road
Yorktown, Virginia 23692

SCALE: 1" = 100' DATE: MARCH 26, 1997



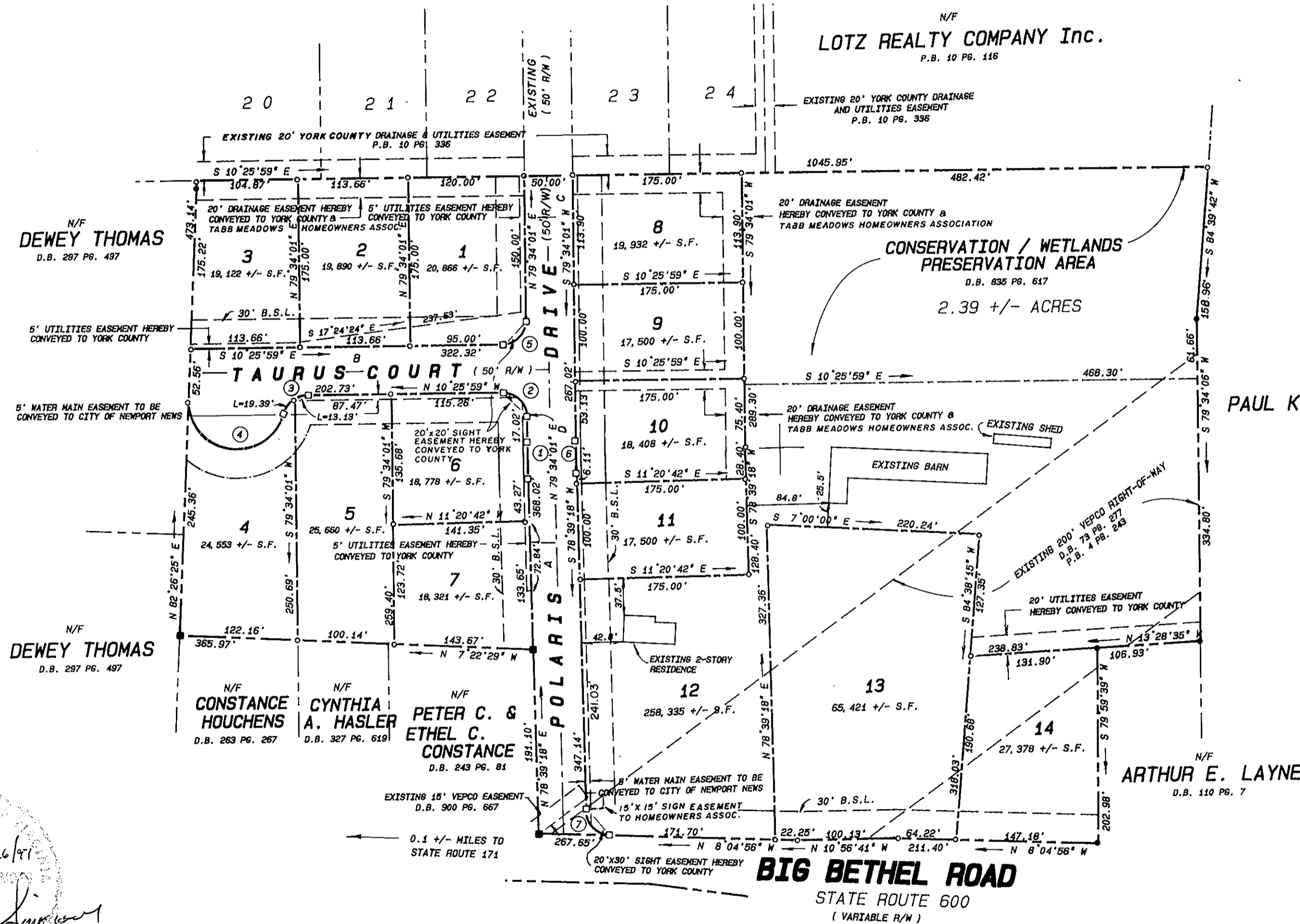
SHEET 2 of 2

CURVE TABLE

No.	DELTA	RADIUS	LENGTH	TANGENT	CHORD	CHORD BEARING
1	00° 54' 43"	3025.00'	48.15'	24.07'	48.15'	N79° 06' 39"E
2	90° 00' 00"	25.00'	39.27'	25.00'	35.36'	N34° 34' 01"E
3	74° 32' 02"	25.00'	32.52'	19.02'	30.28'	N47° 42' 00"W
4	167° 24' 26"	50.00'	146.09'	453.16'	99.40'	N01° 15' 48"W
5	90° 00' 00"	25.00'	39.27'	25.00'	35.36'	S55° 25' 59"E
6	00° 54' 43"	2975.00'	47.35'	23.68'	47.35'	S79° 06' 39"W
7	86° 44' 14"	35.00'	52.99'	33.06'	48.07'	S35° 17' 11"W

LOTZ ACRES ESTATE SECTION 2

P.B. 10 PG. 336



LEGEND

- Iron Pipe Found
- Iron Pipe Set
- I.R.--- Iron Rod Found
- Monument Found
- Monument Set

N/F
PAUL K. & MARY B. LOTZ
D.B. 392 PG. 657

N/F
ARTHUR E. LAYNE
D.B. 110 PG. 7

APPROVED:
YORK COUNTY BOARD OF SUPERVISORS

BY: John D. Newsome, PE
PLAT APPROVING AGENT

DATE: 9-4-97

STATE OF VIRGINIA
COUNTY OF YORK
In the Clerk's Office of the Circuit Court for the County of York the 5th day of Sept. 1997 this map was presented and admitted to record as the law directs in PLAT BOOK 12 at PAGE 506

TESTE: Nancy B. Kane
Clerk
BY: Carol D. Prosser, Deputy Clerk

CENTERLINE COURSE TABLE

COURSE	BEARING	DISTANCE
A	N 78° 39' 18" E	369.34'
B	N 10° 25' 59" W	373.57'
C	N 79° 34' 01" E	267.03'

CURVE No.	DELTA	RADIUS	LENGTH	TANGENT	CHORD	CHORD BEARING
D	00° 54' 43"	3000.00'	47.75'	23.87'	47.75'	N 79° 05' 39" E

