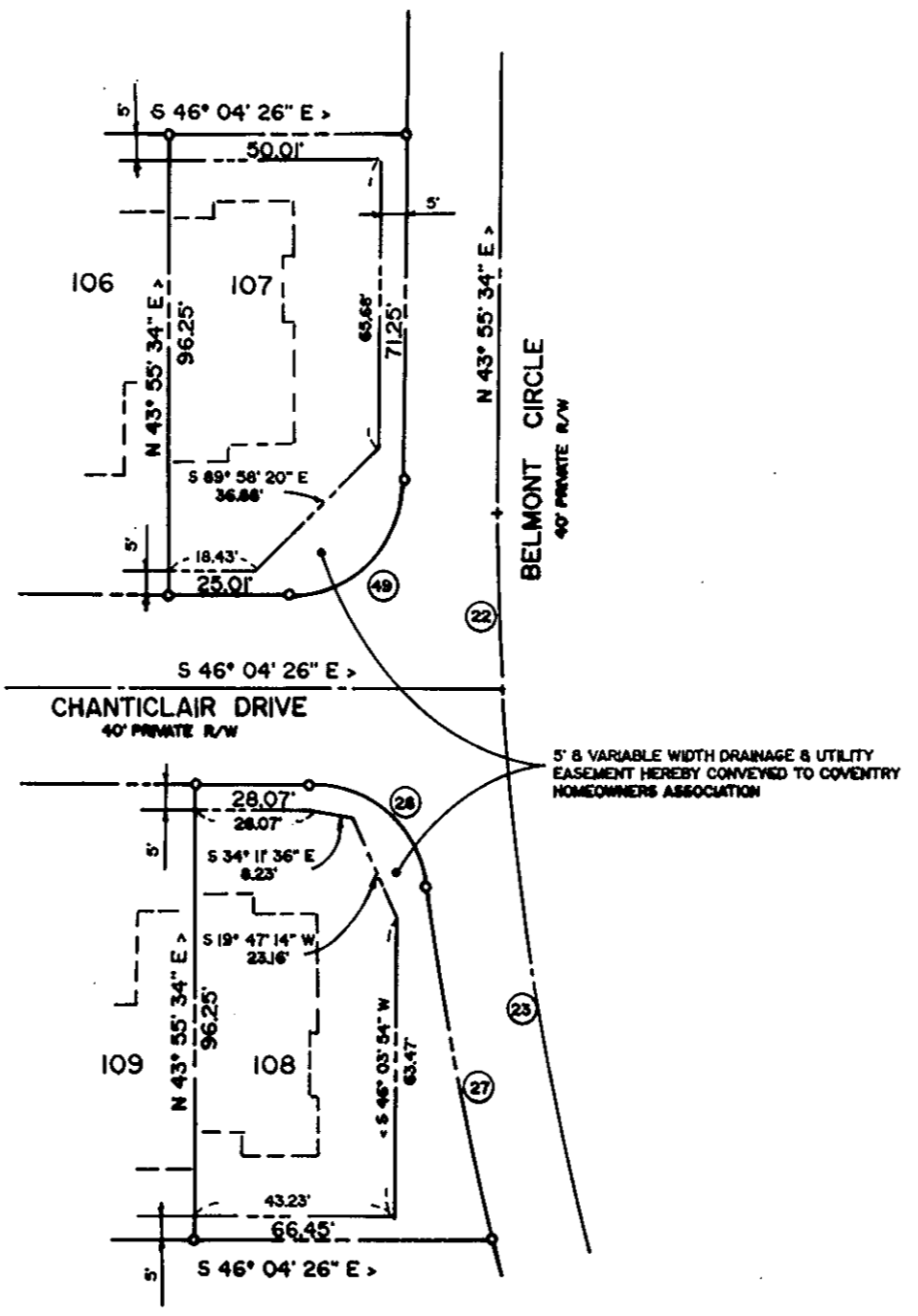


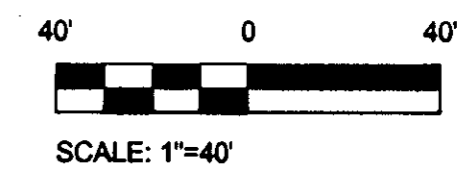
LOT TABULATION			
LOT NO.	AREA S.F.	LOT NO.	AREA S.F.
19	3800.00	97	3485.00
20	3850.00	98	2117.50
21	3850.00	99	2117.50
22	3650.00	100	3239.80
23	3425.00	101	3239.80
24	3650.00	102	2117.50
25	3825.00	103	2117.50
26	3449.11	104	3561.25
27	3593.95	105	3561.25
28	4568.79	106	2117.50
29	6371.49	107	4679.16
30	6377.78	108	5408.96
51	5039.32	109	2117.50
52	4142.34	110	2117.50
53	5012.87	111	3657.50
54	5200.75	112	3657.50
55	4000.75	113	2117.50
56	3971.05	114	3239.80
57	4013.53	115	3239.80
58	4212.37	116	2117.50
59	3859.88	117	2117.50
60	3960.00	118	3561.25
90	4582.12	119	3561.25
91	2117.50	120	2117.50
92	2117.50	121	2117.50
93	3657.50	122	3561.25
94	3657.50	123	3561.25
95	2117.50	124	2117.50
96	3485.00	125	4582.12



EASEMENT DETAIL - LOTS 107 & 108  
SCALE: 1" = 40'

RECORD PLAT  
COVENTRY PLANNED DEVELOPMENT  
FINCH TERRACE  
SECTION 5B  
COUNTY OF YORK, VIRGINIA

CAMPBELL LAND SURVEYING, INC.  
P.O. BOX 855  
YORKTOWN, VIRGINIA 23692  
(757) 890-0837  
MAY 20, 1997  
SCALE: 1" = 40' SHEET 3 OF 3

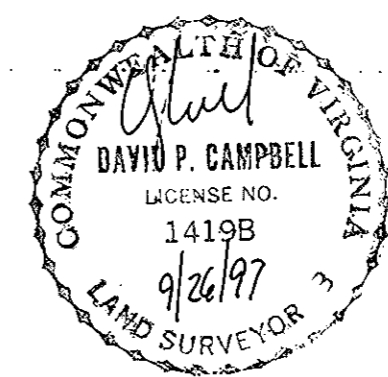


CURVE DATA

	DELTA	RADIUS	LENGTH	TANGENT	CHORD BEARING	CHORD DIST.
1	02° 10' 38"	500.00'	19.00'	9.50'	S 42° 50' 15" W	19.00'
2	03° 57' 12"	500.00'	34.50'	17.26'	S 39° 46' 20" W	34.49'
3	03° 46' 00"	500.00'	32.87'	16.44'	S 35° 54' 44" W	32.87'
4	03° 43' 37"	500.00'	32.52'	16.27'	S 32° 09' 56" W	32.52'
5	05° 09' 23"	500.00'	45.00'	22.51'	S 27° 43' 26" W	44.98'
6	07° 21' 50"	500.00'	64.26'	32.18'	S 21° 27' 49" W	64.22'
7	26° 08' 40"	500.00'	228.15'	116.10'	S 30° 51' 14" W	226.18'
8	59° 46' 46"	75.00'	78.25'	43.11'	N 59° 26' 25" E	75.75'
9	59° 46' 46"	95.00'	99.12'	54.60'	N 59° 26' 25" E	94.68'
10	59° 46' 46"	115.00'	119.98'	66.10'	N 59° 26' 25" E	114.62'
11	10° 28' 21"	115.00'	21.02'	10.54'	N 84° 05' 37" E	20.99'
12	14° 21' 29"	115.00'	28.82'	14.49'	N 71° 40' 42" E	28.74'
13	12° 52' 11"	115.00'	25.82'	12.97'	N 58° 03' 52" E	25.78'
14	12° 27' 19"	115.00'	25.00'	12.55'	N 45° 24' 08" E	24.95'
15	09° 37' 26"	115.00'	19.31'	9.66'	N 34° 21' 45" E	19.29'
16	14° 22' 32"	610.00'	153.05'	76.93'	N 36° 44' 18" E	152.65'
17	00° 45' 05"	610.00'	8.00'	4.00'	N 29° 55' 35" E	8.00'
18	03° 43' 37"	610.00'	39.68'	19.85'	N 32° 09' 56" E	39.67'
19	03° 46' 00"	610.00'	40.10'	20.06'	N 35° 54' 44" E	40.10'
20	03° 57' 12"	610.00'	42.09'	21.05'	N 39° 46' 20" E	42.08'
21	02° 10' 38"	610.00'	23.18'	11.59'	N 42° 50' 15" E	23.18'
22	03° 24' 45"	630.00'	37.52'	18.77'	S 42° 16' 12" W	37.52'
23	10° 57' 47"	630.00'	120.54'	60.46'	S 35° 01' 56" W	120.36'
24	07° 21' 19"	650.00'	83.44'	41.78'	N 33° 13' 41" E	83.38'
25	00° 14' 21"	650.00'	2.71'	1.36'	N 29° 40' 13" E	2.71'

CURVE DATA

	DELTA	RADIUS	LENGTH	TANGENT	CHORD BEARING	CHORD DIST.
26	00° 27' 15"	650.00'	5.15'	2.58'	N 30° 01' 00" E	5.15'
27	06° 39' 43"	650.00'	75.58'	37.83'	N 33° 34' 29" E	75.53'
28	82° 58' 47"	25.00'	36.21'	22.11'	N 04° 35' 03" W	33.12'
29	36° 10' 26"	30.00'	18.94'	9.80'	N 64° 09' 39" W	18.63'
30	03° 07' 44"	30.00'	1.64'	0.82'	N 83° 48' 44" W	1.64'
31	78° 36' 20"	54.00'	74.08'	44.20'	N 46° 04' 26" W	68.41'
32	03° 07' 44"	30.00'	1.64'	0.82'	N 08° 20' 08" W	1.64'
33	36° 10' 26"	30.00'	18.94'	9.80'	N 27° 59' 13" W	18.63'
34	90° 00' 00"	25.00'	39.27'	25.00'	S 88° 55' 34" W	35.36'
35	52° 55' 26"	70.00'	64.66'	34.84'	S 17° 27' 51" W	62.38'
36	52° 55' 26"	90.00'	83.13'	44.80'	N 17° 27' 51" E	80.21'
37	52° 55' 26"	110.00'	101.61'	54.75'	N 17° 27' 51" E	98.03'
38	13° 31' 24"	110.00'	25.96'	13.04'	N 02° 14' 11" W	25.90'
39	06° 33' 13"	110.00'	12.58'	6.30'	N 07° 48' 08" E	12.58'
40	11° 45' 17"	110.00'	22.57'	11.32'	N 16° 57' 23" E	22.53'
41	15° 55' 21"	110.00'	30.57'	15.38'	N 30° 47' 42" E	30.47'
42	05° 10' 11"	110.00'	9.93'	4.97'	N 41° 20' 28" E	9.92'
43	90° 00' 00"	25.00'	39.27'	25.00'	S 01° 04' 26" E	35.36'
44	36° 10' 26"	30.00'	18.94'	9.80'	S 64° 09' 39" E	18.63'
45	03° 07' 44"	30.00'	1.64'	0.82'	S 83° 48' 44" E	1.64'
46	78° 36' 20"	54.00'	74.08'	44.20'	S 46° 04' 26" E	68.41'
47	03° 07' 44"	30.00'	1.64'	0.82'	S 08° 20' 08" E	1.64'
48	36° 10' 26"	30.00'	18.94'	9.80'	S 27° 59' 13" E	18.63'
49	90° 00' 00"	25.00'	39.27'	25.00'	N 88° 55' 34" E	35.36'



APPROVED  
YORK COUNTY BOARD OF SUPERVISORS

By: John T. Allen, PE  
PLAT APPROVING AGENT  
Date: 11-10-97

STATE OF VIRGINIA  
COUNTY OF YORK  
IN THE CLERK'S OFFICE OF THE CIRCUIT COURT FOR THE COUNTY OF YORK  
THE 12<sup>th</sup> DAY OF November 1997, THIS  
MAP WAS PRESENTED AND ADMITTED TO RECORD AS THE LAW DIRECTS  
IN PLAT BOOK 12, PAGE 529. 2:55

TESTE Nancy B. Kane CLERK  
BY David P. Campbell, Inc.