

N OR F
WALLACE EUGENE BANK, ET UX
T.M. 25-343
DB 405, PG 763
DB 405, PG 764 (PLAT)

N OR F
OLIVE B. HILL, TRUSTEE FOR
THE COHEN REVOCABLE
LIVING TRUST
T.M. 25-342
DB 60, PG 92
DB 772, PG 596

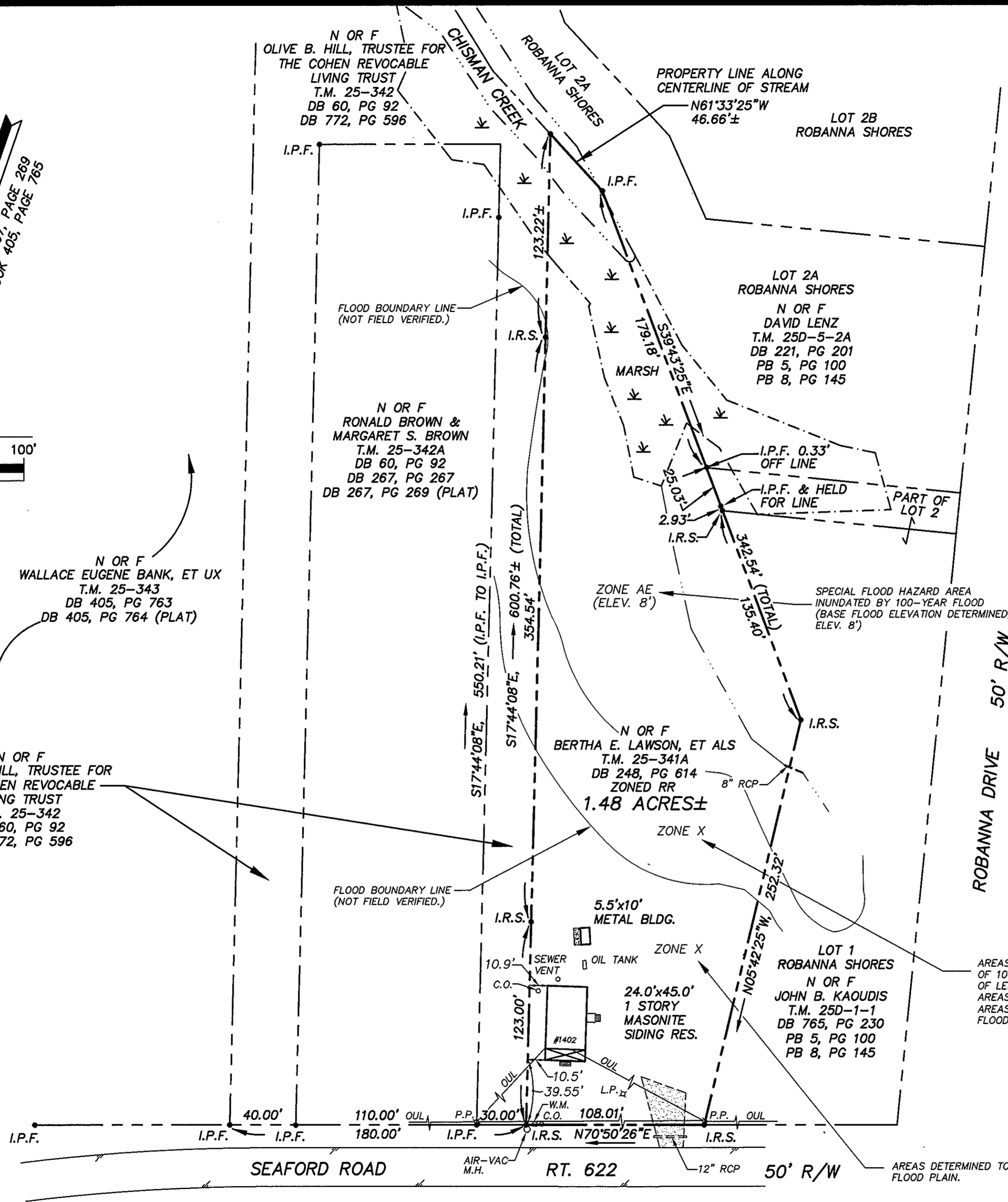
N OR F
OLIVE B. HILL, TRUSTEE FOR
THE COHEN REVOCABLE
LIVING TRUST
T.M. 25-342
DB 60, PG 92
DB 772, PG 596

N OR F
RONALD BROWN &
MARGARET S. BROWN
T.M. 25-342A
DB 60, PG 92
DB 267, PG 267
DB 267, PG 269 (PLAT)

N OR F
BERTHA E. LAWSON, ET ALS
T.M. 25-341A
DB 248, PG 614
ZONED RR
1.48 ACRES±

LOT 1
ROBANNA SHORES
N OR F
JOHN B. KAUDIS
T.M. 25D-1-1
DB 765, PG 230
PB 5, PG 100
PB 8, PG 145

LOT 2A
ROBANNA SHORES
N OR F
DAVID LENZ
T.M. 25D-5-2A
DB 221, PG 201
PB 5, PG 100
PB 8, PG 145



NOTE:
FLOOD ZONE INFORMATION SHOWN WAS TAKEN
FROM F.E.M.A. FLOOD INSURANCE RATE MAP
COMMUNITY-PANEL NUMBER 510182-0018 B,
DATED DECEMBER 16, 1988 HAS NOT BEEN
FIELD VERIFIED BY THE SURVEYOR.

NOTE:
PROPERTY MAY LIE WITHIN A RESOURCE PROTECTION AREA (RPA)
AND/OR A RESOURCE MANAGEMENT AREA (RMA). HOWEVER, LIMITS
OF ANY RPA AND/OR RMA HAVE NOT BEEN FIELD MAPPED BY THIS
SURVEY

ROBANNA DRIVE 50' R/W

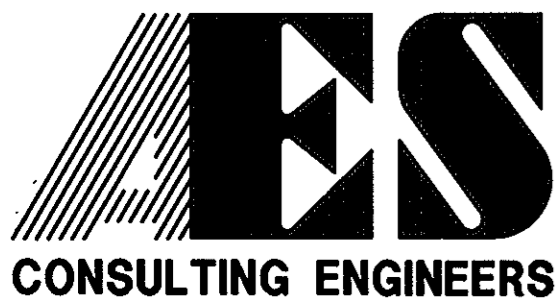
AREAS OF 500-YEAR FLOOD; AREAS
OF 100 YEAR FLOOD WITH AVERAGE DEPTHS
OF LESS THAN 1 FOOT OR WITH DRAINAGE
AREAS LESS THAN 1 SQUARE MILE; AND
AREAS PROTECTED BY LEVEES FROM 100-YEAR
FLOOD.

AREAS DETERMINED TO BE OUTSIDE 500-YEAR
FLOOD PLAN.

Plat Book No. 12 Page 553

Filed in the Clerk's Office, Circuit Court, York Co., Va.
the 29th day of December 19 97

Teste:
Nancy B. Kane, Clerk
[Signature] D.C.



5248 Olde Towne Road, Suite 1
Williamsburg, Virginia 23188
(757) 253-0040
Fax (757) 220-8994

PLAT OF SURVEY
A PARCEL CONTAINING 1.48 ACRES±

OWNED BY:
BERTHA E. LAWSON, ET ALS

GRAFTON DISTRICT YORK COUNTY VIRGINIA



No.	DATE	REVISION / COMMENT / NOTE	BY

Designed CMA	Drawn CMA
Scale 1" = 50'	Date 6/17/97
Project No. 8362	
Drawing No. 1 OF 1	