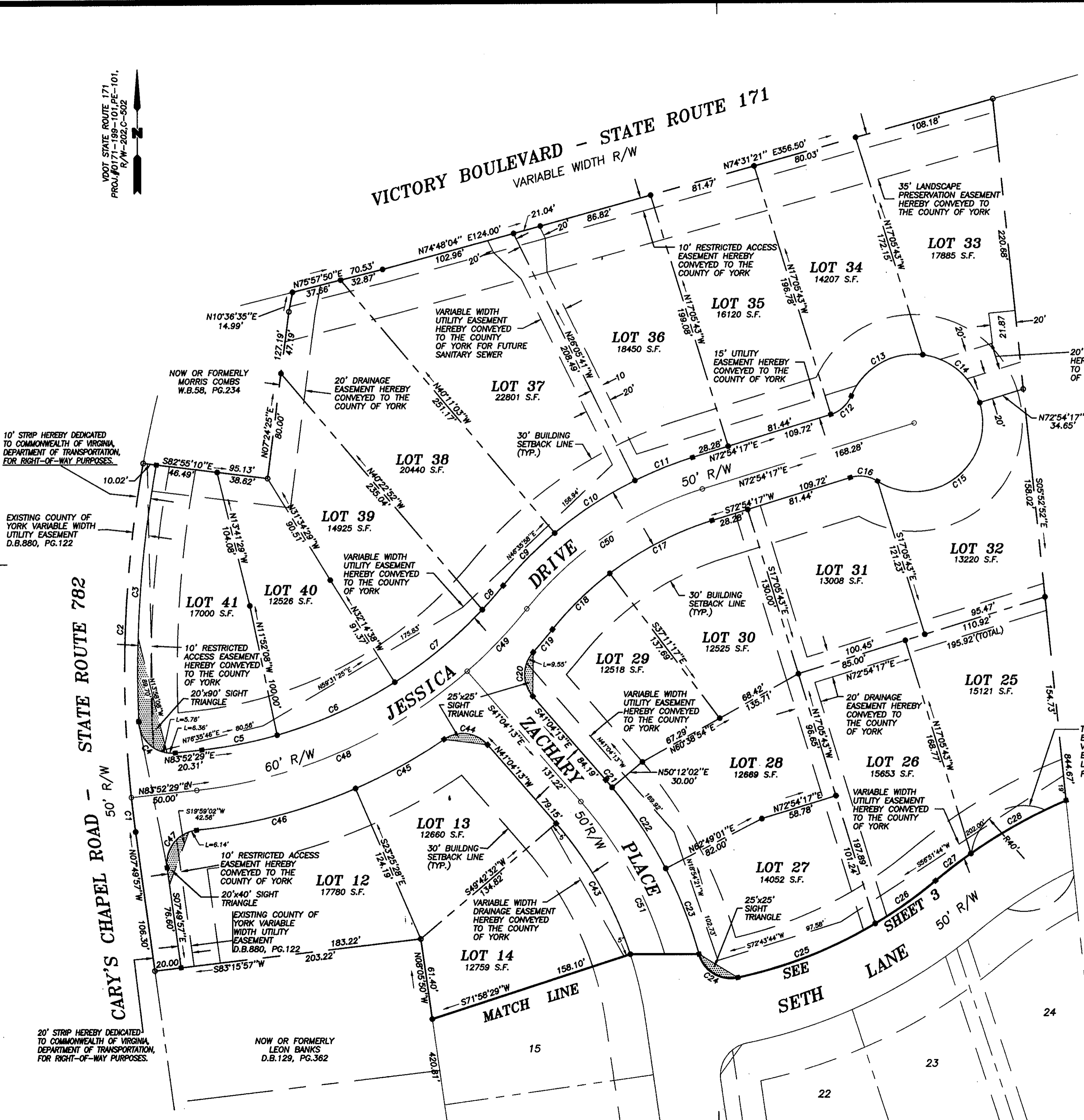
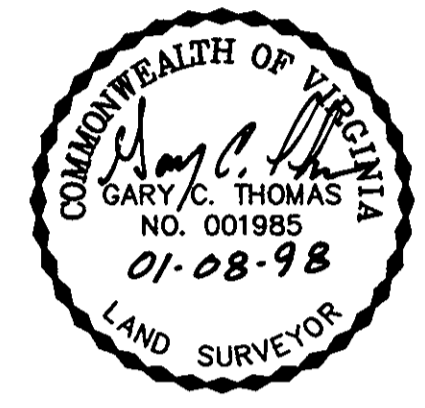


VDOT STATE ROUTE 171
 PROJ. #0171-199-101, PE-101,
 R/W-202, C-502

PLAT OF SUBDIVISION
YORK COLONY
 BETHEL MAGISTERIAL DISTRICT
 COUNTY OF YORK, VIRGINIA

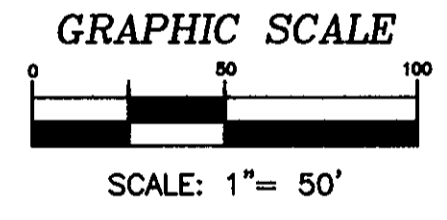
DATE: 11/17/97	SHEET 2 OF 4	SCALE: 1"=50'
PROJECT NO: 95-006	DRAWN BY: PAUL MICHAEL	

SLEDD & ASSOCIATES, P.C.
 ENGINEERS PLANNERS SURVEYORS
 11832 ROCK LANDING DRIVE, SUITE 203
 NEWPORT NEWS, VIRGINIA 23606
 (757) 873-3386



NOW OR FORMERLY
 A. B. SOUTHALL, JR.
 D.B.208, PG.368

- LEGEND**
- INDICATES IRON PIPE TO BE SET
 - INDICATES VARIABLE WIDTH SIGHT EASEMENT HEREBY CONVEYED TO THE COUNTY OF YORK
 - INDICATES IRON PIPE FOUND
 - INDICATES MONUMENTS TO BE SET



APPROVED:
YORK COUNTY BOARD OF SUPERVISORS
 BY: Paul Michael, PE
 PLAT-APPROVING AGENT
 DATE: 1-20-98

STATE OF VIRGINIA
COUNTY OF YORK
 IN THE CLERK'S OFFICE OF THE CIRCUIT COURT FOR THE COUNTY OF YORK, THE 21st DAY OF January, 1998.
 THIS MAP WAS PRESENTED AND ADMITTED TO RECORD AS THE LAW DIRECTS IN PLAT BOOK 12, PAGE 557.
NANCY B. KANE, CLERK
 TESTE: _____
 CLERK
 BY: Kristen N. Potter