

SECTION ONE

BRUTON DISTRICT - COUNTY OF YORK, VIRGINIA

SCALE: 1" = 50' AUGUST 12, 1997

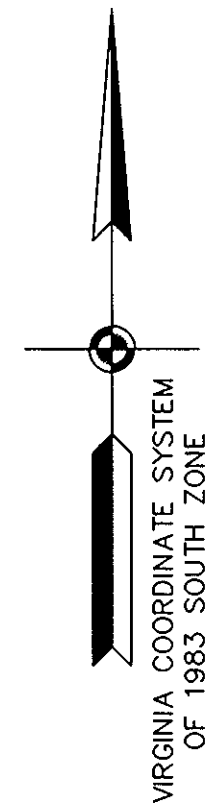
SHEET 2 OF 3

0 25 50 100 150 200 FEET

GRAPHIC SCALE

THE SIRINE GROUP, LTD.

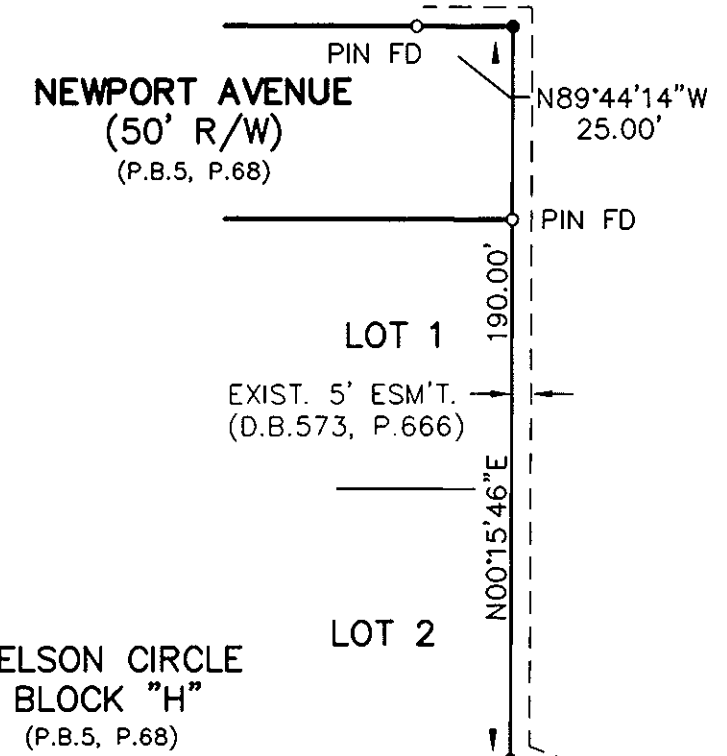
SURVEYORS • ENGINEERS • PLANNERS  
4794 GEORGE WASHINGTON MEMORIAL HIGHWAY  
U.S. ROUTE 17  
P.O. BOX 450  
WHITE MARSH, VIRGINIA 23183



NOW OR FORMERLY  
BRUTON GLEN L.L.C.,  
A VIRGINIA LIMITED LIABILITY COMPANY  
(D.B.938, P.681)  
(FUTURE DEVELOPMENT)

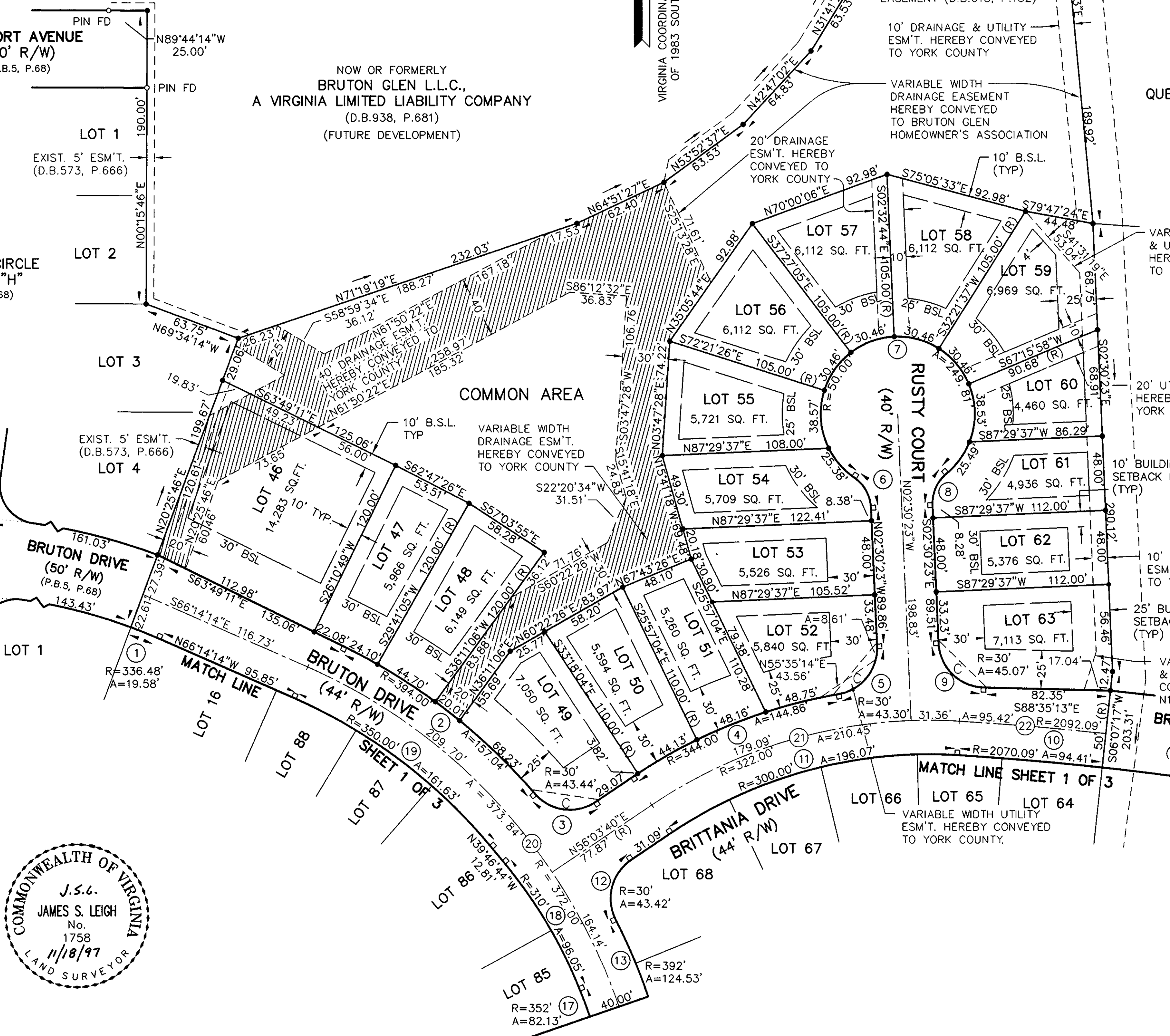
QUEEN'S CREEK ESTATES  
SECTION 1  
(P.B.12, P.26)  
COMMON AREA

QUEEN'S CREEK ESTATES  
SECTION 2B  
(P.B.12, P.438)  
COMMON AREA



NELSON CIRCLE  
BLOCK "H"  
(P.B.5, P.68)

NELSON DRIVE  
(50' R/W)



EXIST. YORK COUNTY 20'  
DRAINAGE & UTILITY  
EASEMENT (D.B.615, P.132)

10' DRAINAGE & UTILITY  
ESM'T. HEREBY CONVEYED  
TO YORK COUNTY

VARIABLE WIDTH  
DRAINAGE EASEMENT  
HEREBY CONVEYED  
TO BRUTON GLEN  
HOMEOWNER'S ASSOCIATION

20' DRAINAGE  
ESM'T. HEREBY  
CONVEYED TO  
YORK COUNTY

10' B.S.L.  
(TYP)

VARIABLE WIDTH DRAINAGE  
& UTILITY EASEMENT  
HEREBY CONVEYED  
TO YORK COUNTY

20' UTILITY EASEMENT  
HEREBY CONVEYED TO  
YORK COUNTY

COMMON AREA

VARIABLE WIDTH  
DRAINAGE ESM'T.  
HEREBY CONVEYED  
TO YORK COUNTY

10' DRAINAGE & UTILITY  
ESM'T. HEREBY CONVEYED  
TO YORK COUNTY

25' BUILDING  
SETBACK LINE  
(TYP)

VARIABLE WIDTH DRAINAGE  
& UTILITY ESM'T. HEREBY  
CONVEYED TO YORK COUNTY

BRITANIA DRIVE  
(50' R/W)  
(P.B.12, P.438)

APPROVED:  
YORK COUNTY BOARD OF SUPERVISORS

BY: *[Signature]*  
PLAT APPROVING AGENT

DATE: 4-21-98

STATE OF VIRGINIA  
COUNTY OF YORK  
IN THE CLERK'S OFFICE OF THE CIRCUIT COURT FOR  
THE COUNTY OF YORK THE 27 DAY OF April,  
1998, THIS PLAT WAS PRESENTED AND ADMITTED TO  
RECORD AS THE LAW DIRECTS IN PLAT BOOK 12,  
PAGE 575.

TESTE: *[Signature]*  
CLERK

BY: *[Signature]*  
Deed Book 1008 Pg 506

PROPERTY IS TAX MAP 10, PARCEL 10-51A, A PORTION

