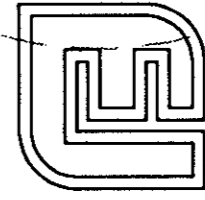


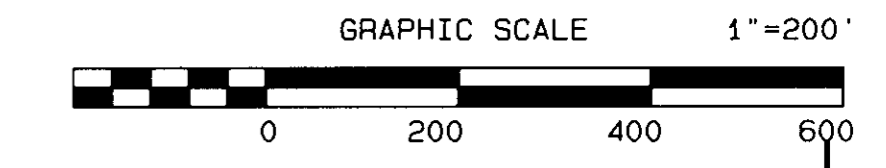
PLAT SHOWING RESUBDIVISION OF WHITTAKERS MILL TRACT

BRUTON DISTRICT YORK COUNTY, VIRGINIA
 DATE: 05/28/98 SCALE: 1"=200'

SHEET 5 OF 6



Langley and McDonald, P.C.
 Engineers · Surveyors · Planners
 Landscape Architects · Environmental Consultants
 VIRGINIA BEACH WILLIAMSBURG
 201 PACKETS COURT
 WILLIAMSBURG, VA 23185
 (804) 253-2975



PARCEL 2
 222 ACRES +/-

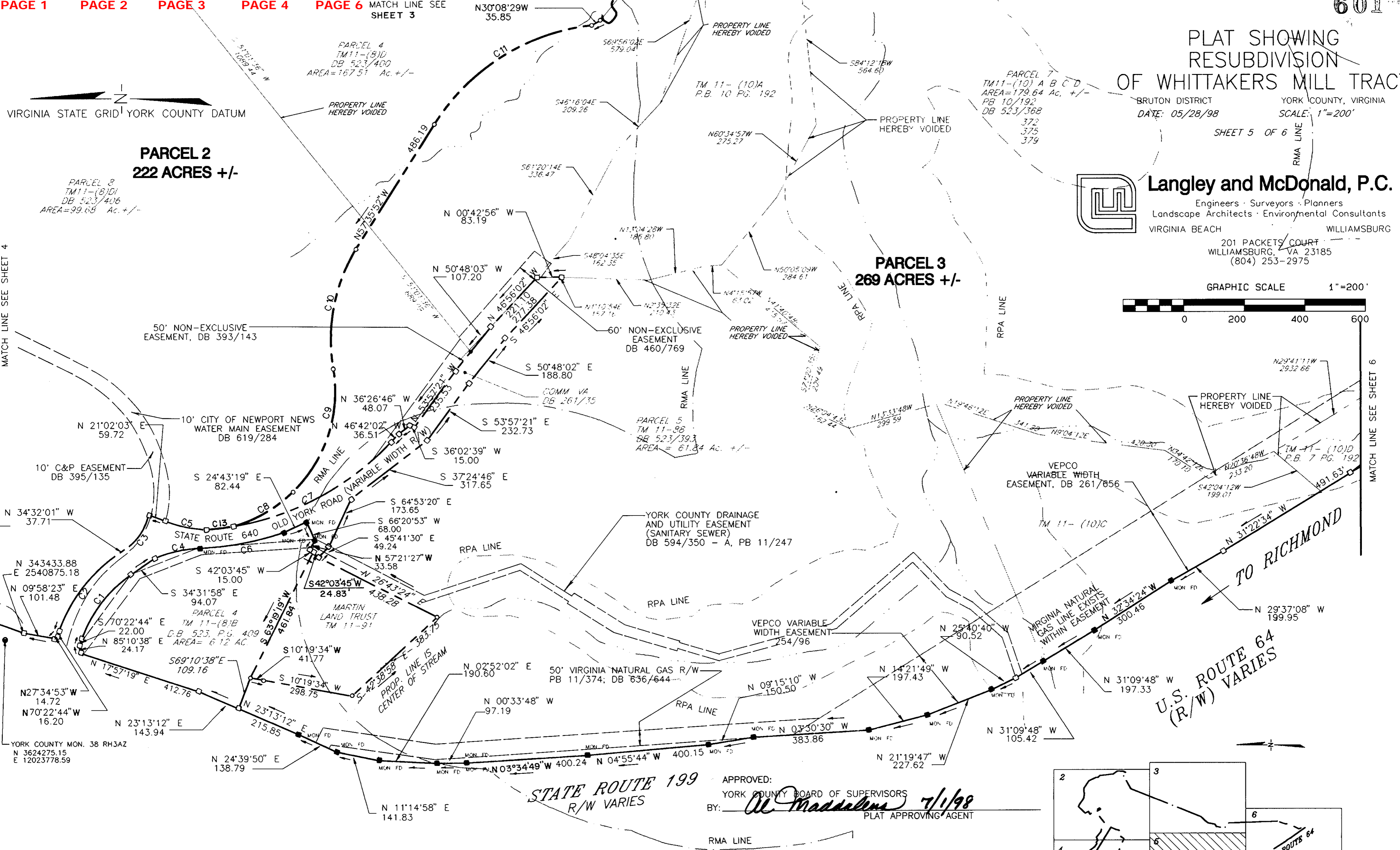
PARCEL 2
 TM 11-(8)D
 DB 523/406
 AREA=99.68 Ac. +/-

PARCEL 3
 269 ACRES +/-

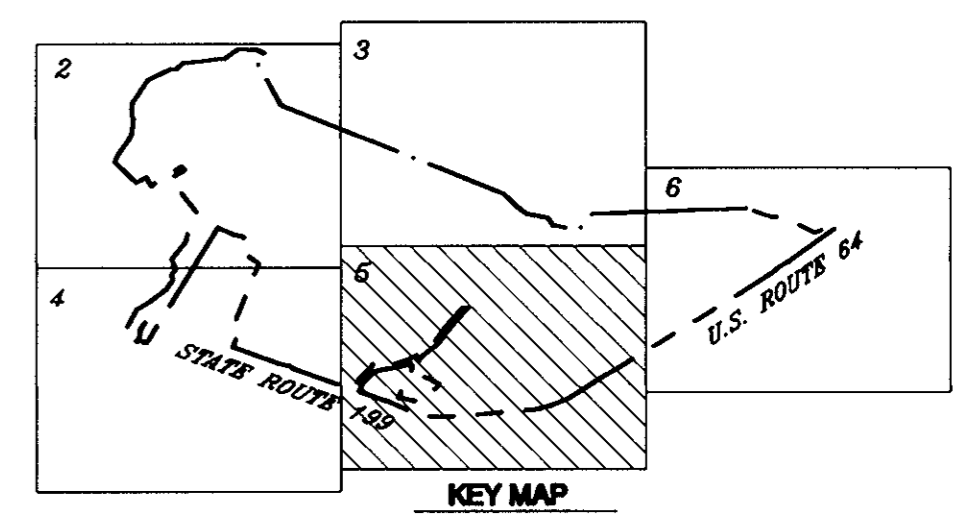
PARCEL 5
 TM 11-98
 DB 523/393
 AREA= 61.84 Ac. +/-

PARCEL 4
 TM 11-(8)D
 DB 523/400
 AREA=167.51 Ac. +/-

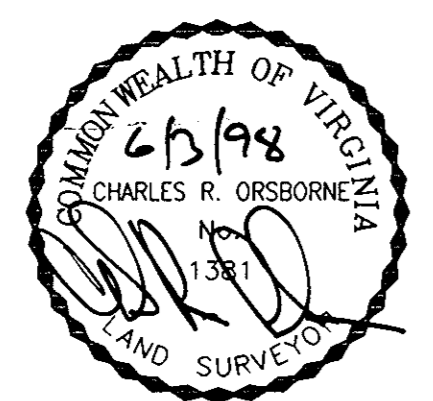
PARCEL 7
 TM 11-(10) A B C D
 AREA=179.64 Ac. +/-
 PB 10/192
 DB 523/368
 372
 375
 379



APPROVED:
 YORK COUNTY BOARD OF SUPERVISORS
 BY: *Al Maddalena* 7/1/98
 PLAT APPROVING AGENT



| CURVE | RADIUS | ARC | CHORD BEARING | CHORD | DELTA |
|-------|---------|---------|---------------|---------|-----------|
| C1 | 437.47' | 273.69' | N52°27'21"W | 269.25' | 35°50'44" |
| C2 | 517.47' | 323.73' | S52°27'23"E | 318.48' | 35°50'41" |
| C3 | 174.75' | 135.16' | S56°41'33"E | 131.82' | 44°19'00" |
| C4 | 447.47' | 156.43' | N12°22'55"W | 155.63' | 20°01'45" |
| C5 | 433.97' | 136.64' | S12°00'49"W | 136.08' | 18°02'26" |
| C6 | 983.31' | 282.76' | N10°36'20"W | 281.79' | 16°28'34" |
| C7 | 923.31' | 604.07' | S27°57'29"E | 593.35' | 37°29'06" |
| C8 | 461.94' | 231.96' | S29°45'31"E | 229.53' | 28°46'15" |
| C9 | 461.94' | 445.56' | S71°46'35"E | 428.49' | 55°15'53" |
| C10 | 575.00' | 419.60' | S78°30'12"E | 410.35' | 41°48'40" |
| C11 | 706.26' | 631.99' | S31°57'45"E | 611.12' | 51°16'16" |
| C12 | 608.00' | 791.21' | S65°25'40"E | 736.55' | 74°33'41" |
| C13 | 923.31' | 90.42' | S06°24'36"E | 90.38' | 05°36'40" |



STATE OF VIRGINIA
 COUNTY OF YORK
 IN THE CLERK'S OFFICE OF THE CIRCUIT COURT FOR THE COUNTY OF YORK THIS 28th DAY OF July 1998 THIS MAP WAS PRESENTED AND ADMITTED TO RECORD AS THE LAW DIRECTS IN BOOK PAGE 601
 TESTE: *Nancy B. Kane, Clerk*
 BY: *[Signature]*