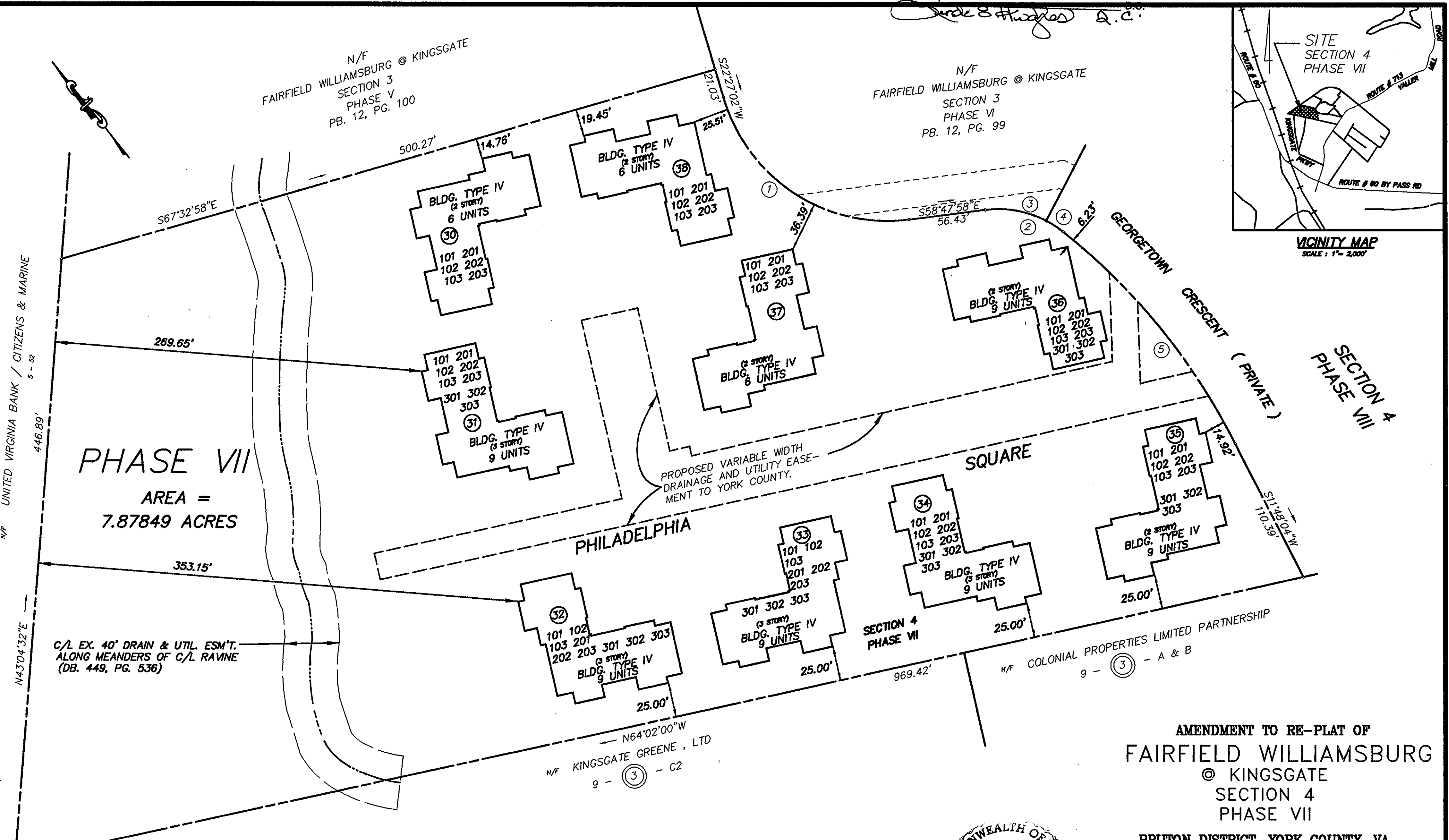
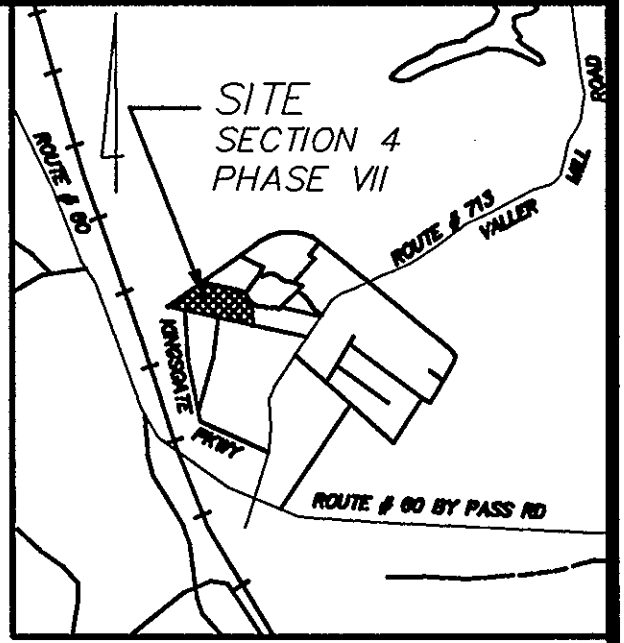


406



C/L EX. 40' DRAIN & UTIL. ESM'T. ALONG MEANDERS OF C/L RAVINE (DB. 449, PG. 536)

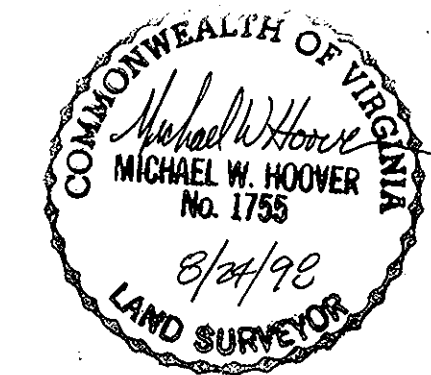
PROPOSED VARIABLE WIDTH DRAINAGE AND UTILITY EASEMENT TO YORK COUNTY.

N/F COLONIAL PROPERTIES LIMITED PARTNERSHIP 9 - (3) - A & B

AMENDMENT TO RE-PLAT OF
 FAIRFIELD WILLIAMSBURG
 @ KINGSGATE
 SECTION 4
 PHASE VII

BRUTON DISTRICT, YORK COUNTY, VA.
 SCALE: 1" = 50'
 DATE: 8-21-1995
 REV.: 3-13-1997
 REV.: 8-24-1998

Dewberry & Davis
 Architects Engineers Planners Surveyors
 1051 East Cary Street, Suite 800
 Richmond, Va 23219 ☎ 804 643-8061, Fax 804 643-8083



CURVE TABLE						
CURVE #	RADIUS	LENGTH	TANGENT	CHORD	BEARING	DELTA
1	125.00'	177.26'	107.23'	162.78'	S18°10'28"E	81°15'00"
2	75.00'	60.63'	32.08'	58.99'	S35°38'23"E	46°19'04"
3	75.00'	46.04'	23.77'	45.32'	S41°12'42"E	35°10'19"
4	75.00'	14.59'	7.32'	14.57'	S18°03'23"E	11°08'45"
5	476.81'	202.03'	102.55'	200.52'	S00°20'14"E	24°16'37"

