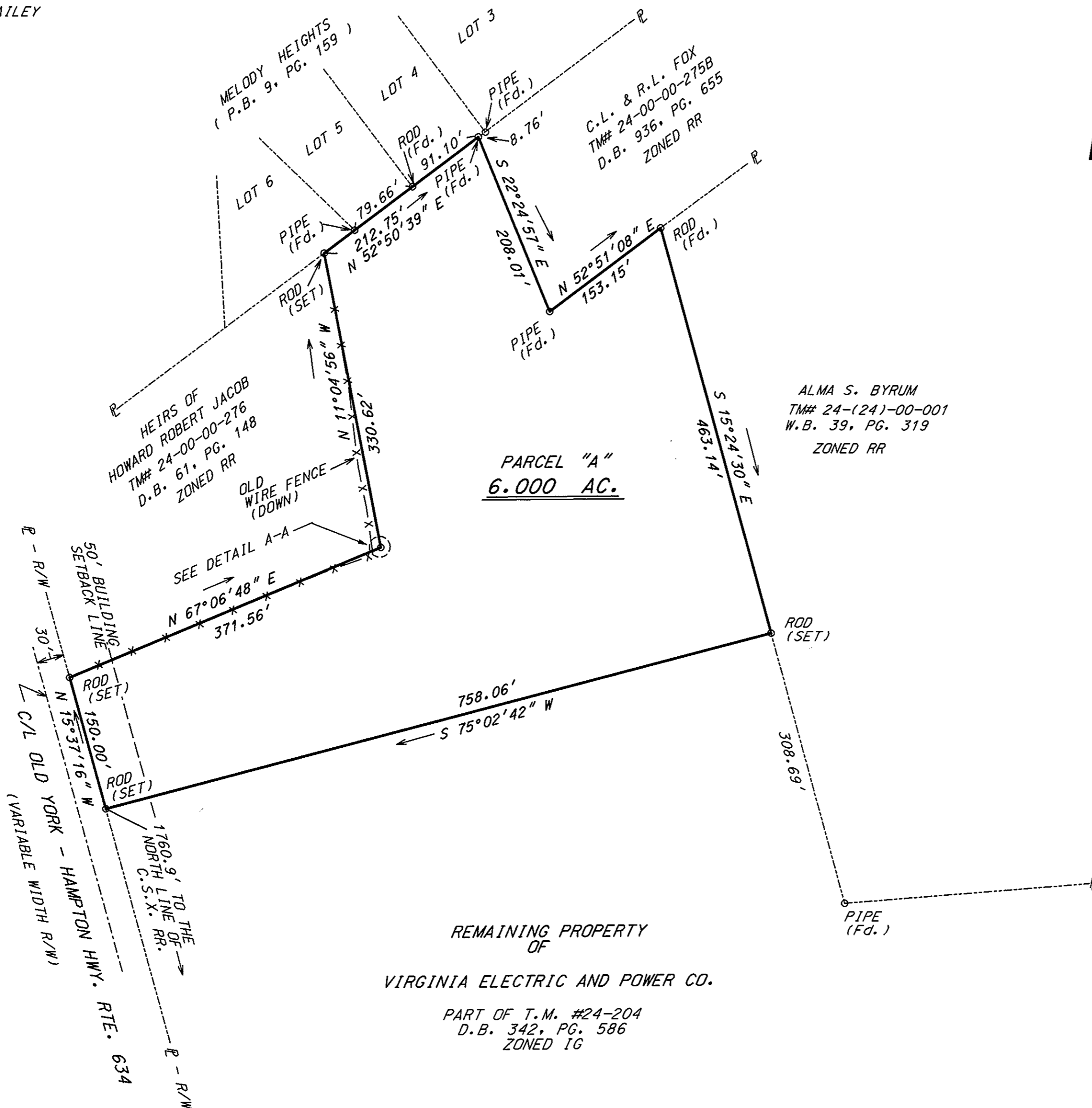
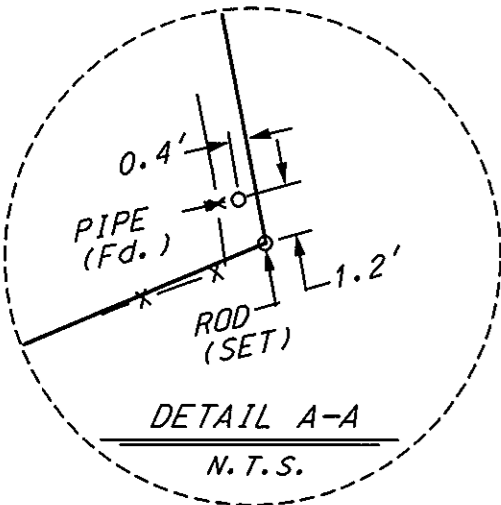


MELODY HEIGHTS

LOT 4
SHAUN E. GLASGOW & LISA J. MITCHELL
T.M. 246-(04)-00-004
D.B. 979, PG. 774
ZONED R20

LOT 5
PHILLIP C. LOWRANCE & JODI K. BAILEY
T.M. 246-(04)-00-005
D.B. 944, PG. 270
ZONED R20

LOT 6
ELIZABETH R. MULLENS
T.M. 246-(04)-00-006
D.B. 535, PG. 192
ZONED R20



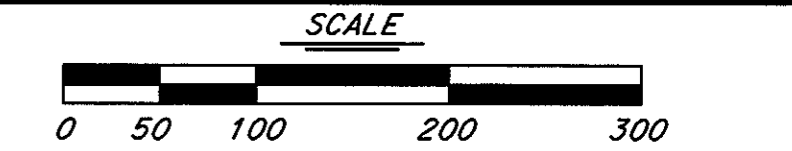
YORK COUNTY GEODETIC MONUMENT # 68 & 69

SUBDIVISION OF THE PROPERTY OF VIRGINIA ELECTRIC AND POWER COMPANY, BEING 6.000 ACRES

SHEET 2 of 2
J.N. RC02099700
GRAFTON DISTRICT, YORK COUNTY, VIRGINIA

DATE: 1/14/98 SCALE: 1" = 100' DRAWN: L.D.H.

BENGTSON, DeBELL & ELKIN, LTD.
808 MOOREFIELD PARK DRIVE, SUITE 220
RICHMOND, VA 23236
PHONE: (804) 320-2667
CONSULTING ENGINEERS • SURVEYORS • PLANNERS • LANDSCAPE ARCHITECTS



Deed Book 1051 Page 276

APPROVED:
YORK COUNTY BOARD OF SUPERVISORS
BY: Don K. Woodard, PLAT APPROVING AGENT
DATE: 10/30/98
STATE OF VIRGINIA
COUNTY OF YORK
IN THE CLERK'S OFFICE OF THE CIRCUIT COURT FOR THE COUNTY OF YORK THE 6th DAY OF November 1998.
THIS MAP WAS PRESENTED FOR THE RECORD AS THE LAW DIRECTS.
PLAT BOOK 12, PAGE 641
TESTE: Nancy B. Kane, CLERK
BY: Catherine Bender, D.C.

