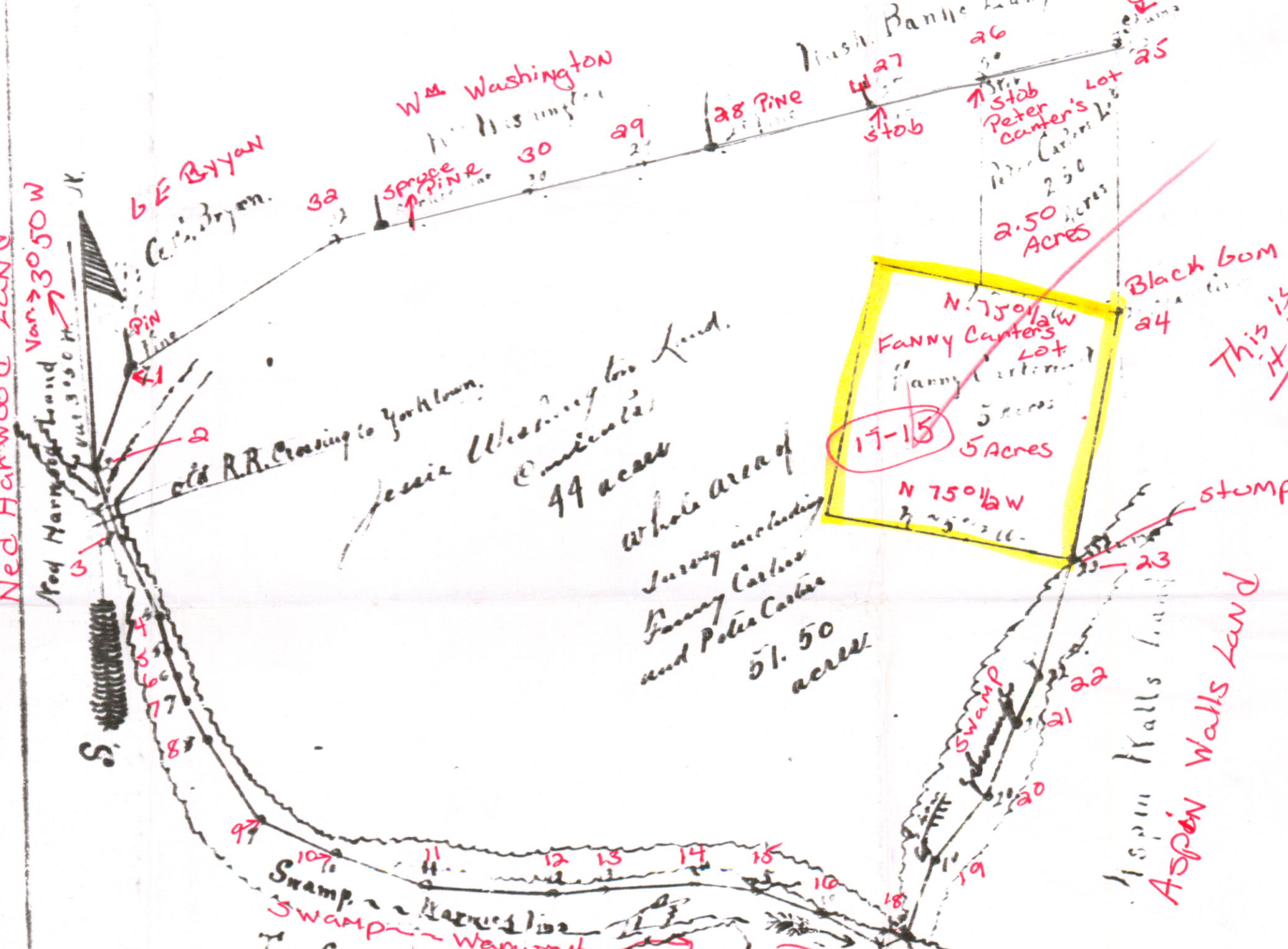


referred to  
26th Nov 1888

ordered at the Court term of York County Com. 1888  
W. C. Wade who was by the said order appointed a special  
surveyor this day returned his plat and report of  
survey made December 7th 1888. On consideration whereof  
the Court doth approve the said report and adopt  
the said plat of the said special surveyor and doth  
order that the same be recorded.

D.B. 21-400

Line	Length	Area
1	1.76	1.76
2	1.76	3.52
3	1.76	5.28
4	1.76	7.04
5	1.76	8.80
6	1.76	10.56
7	1.76	12.32
8	1.76	14.08
9	1.76	15.84
10	1.76	17.60
11	1.76	19.36
12	1.76	21.12
13	1.76	22.88
14	1.76	24.64
15	1.76	26.40
16	1.76	28.16
17	1.76	29.92
18	1.76	31.68
19	1.76	33.44
20	1.76	35.20
21	1.76	36.96
22	1.76	38.72
23	1.76	40.48
24	1.76	42.24
25	1.76	44.00
26	1.76	45.76
27	1.76	47.52
28	1.76	49.28
29	1.76	51.04
30	1.76	52.80
31	1.76	54.56
32	1.76	56.32
33	1.76	58.08
34	1.76	59.84
35	1.76	61.60
36	1.76	63.36
37	1.76	65.12
38	1.76	66.88
39	1.76	68.64
40	1.76	70.40
41	1.76	72.16
42	1.76	73.92
43	1.76	75.68
44	1.76	77.44
45	1.76	79.20
46	1.76	80.96
47	1.76	82.72
48	1.76	84.48
49	1.76	86.24
50	1.76	88.00
51	1.76	89.76
52	1.76	91.52
53	1.76	93.28
54	1.76	95.04
55	1.76	96.80
56	1.76	98.56
57	1.76	100.32
58	1.76	102.08
59	1.76	103.84
60	1.76	105.60
61	1.76	107.36
62	1.76	109.12
63	1.76	110.88
64	1.76	112.64
65	1.76	114.40
66	1.76	116.16
67	1.76	117.92
68	1.76	119.68
69	1.76	121.44
70	1.76	123.20
71	1.76	124.96
72	1.76	126.72
73	1.76	128.48
74	1.76	130.24
75	1.76	132.00
76	1.76	133.76
77	1.76	135.52
78	1.76	137.28
79	1.76	139.04
80	1.76	140.80
81	1.76	142.56
82	1.76	144.32
83	1.76	146.08
84	1.76	147.84
85	1.76	149.60
86	1.76	151.36
87	1.76	153.12
88	1.76	154.88
89	1.76	156.64
90	1.76	158.40
91	1.76	160.16
92	1.76	161.92
93	1.76	163.68
94	1.76	165.44
95	1.76	167.20
96	1.76	168.96
97	1.76	170.72
98	1.76	172.48
99	1.76	174.24
100	1.76	176.00



To the Hon. U.S. District  
Judge of York Co. Ct. I have the honor humbly to  
present for your consideration a plat of a survey made of a piece  
of land formerly owned by Mead Redcross but now owned by Jessie  
Washington, Fanny Carter and Peter Carter, which survey was  
made by order of Court Nov. 19th 1888. The whole area of which  
is 51.5 acres of which 44 acres is owned by Jessie Washington  
for whose benefit it was surveyed.  
Scale of plat 4 chains to inch  
surveyed December 7th 1888  
Respectfully Submitted  
W. C. Wade  
Spl. Surveyor

Tax Map 17-15