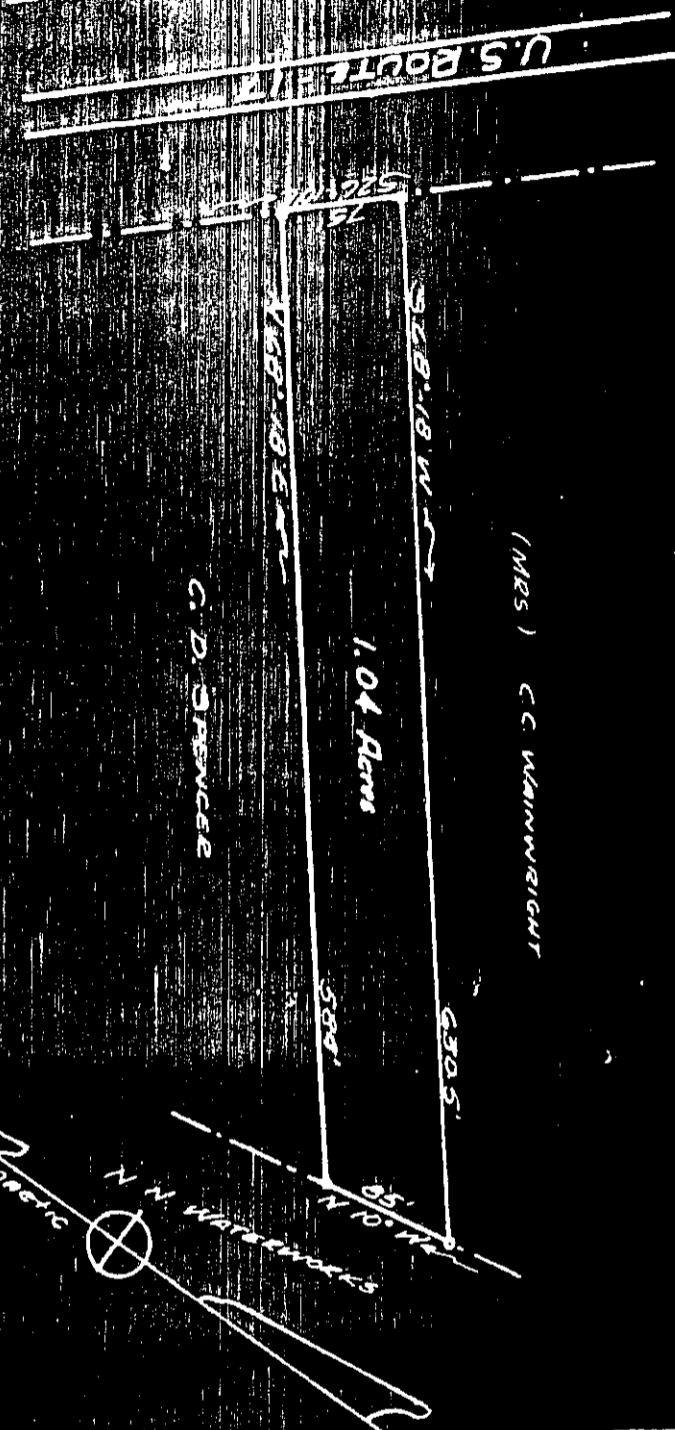


491

U.S. ROUTE 117



(MRS) C. C. WAINWRIGHT

C. D. SPENCER

PLAT

TRACT OF LAND
AS COVERED BY

(Mrs) C. C. WAINWRIGHT
TO

B. S. SERVONSKY

GRAFTON DIST. YORK COUNTY, VA.

Scale: 1" = 100' NOVEMBER 22, 1953

Recorded November 21, 1953
Maple 0-8-10-11-12-13-14-15-16-17-18-19-20-21-22-23-24-25-26-27-28-29-30-31-32-33-34-35-36-37-38-39-40-41-42-43-44-45-46-47-48-49-50-51-52-53-54-55-56-57-58-59-60-61-62-63-64-65-66-67-68-69-70-71-72-73-74-75-76-77-78-79-80-81-82-83-84-85-86-87-88-89-90-91-92-93-94-95-96-97-98-99-100

Wm. C. Spencer

Wm. C. Spencer, Civil Engineer