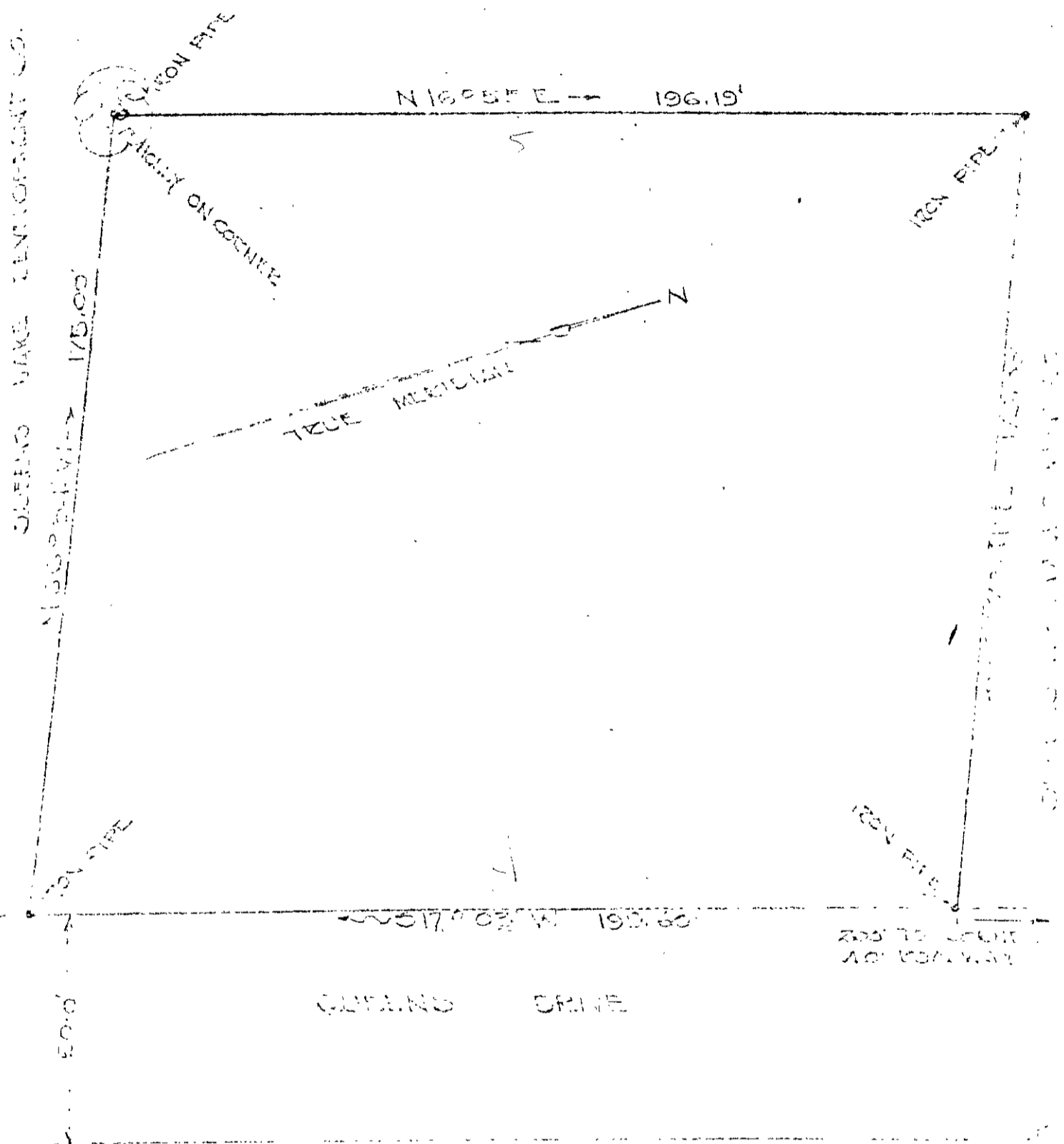


QUEEN'S LAKE DEVELOPMENT CO.



DB 104-66

QUEEN'S LAKE DEVELOPMENT CO.
 PART OF OWNED QUANTITY OF A
 PARCEL OF LAND SITUATED ON
 THE WESTERN SIDE OF QUEEN'S
 LAKE, BRITTON DISTRICT, BRITTON
 COUNTY, VIRGINIA.
 11-17-1966 (SEE RECORD 17530)

SCALE OF MAP
 1" = 100 FEET
 1" = 100 FEET
 1" = 100 FEET
 1" = 100 FEET

Tax Map 7A1 (9) 26