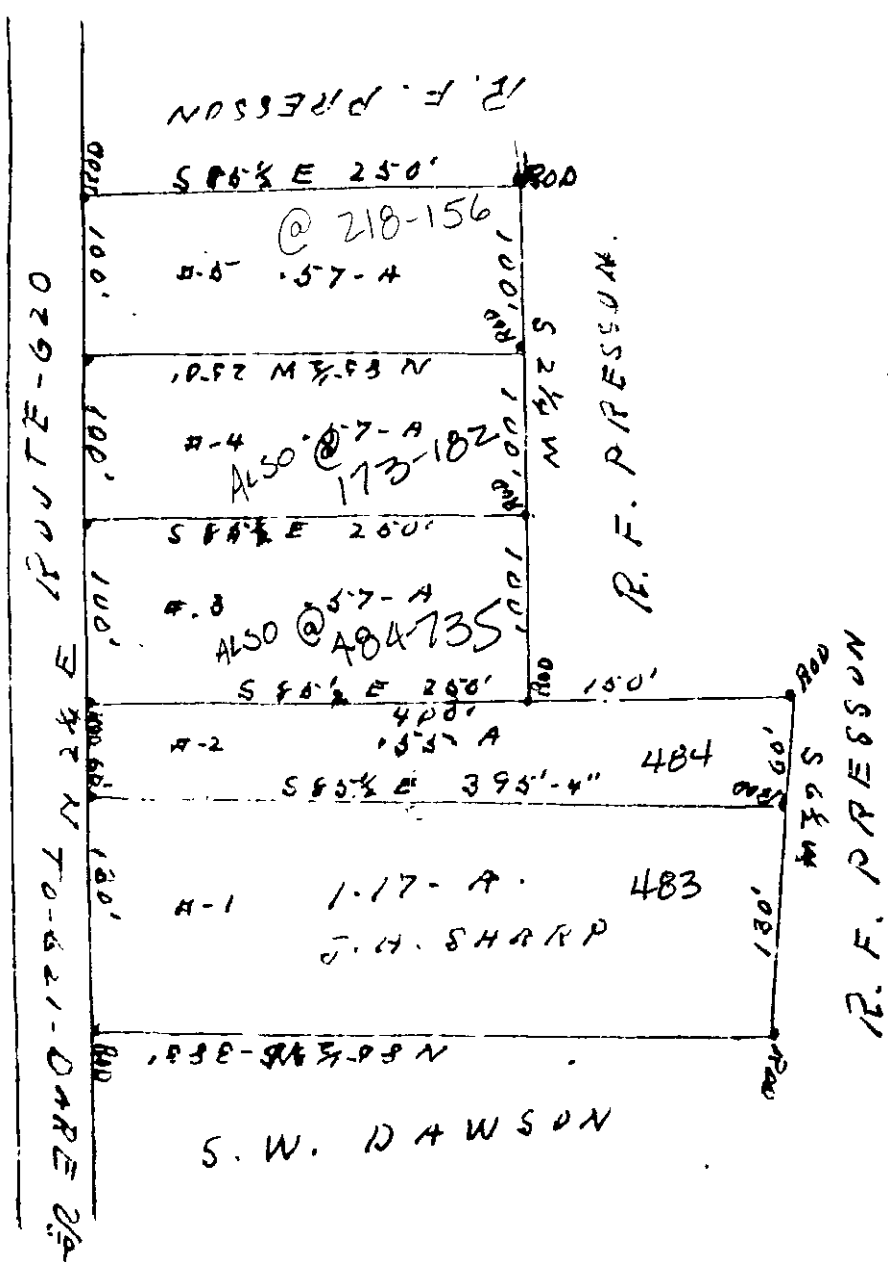


118-415  
118-115



PLAT OF A SECTION OF LOTS  
IN YORK COUNTY AT DARE 2 1/2  
ON ROUTE 620, SURVEYED  
FOR R.F. PRESSON.

FEB 1907  
Scale 1" = 100'

R. F. Hayward  
Cecil J. Sawyer

25-483 1/2 484 ✓