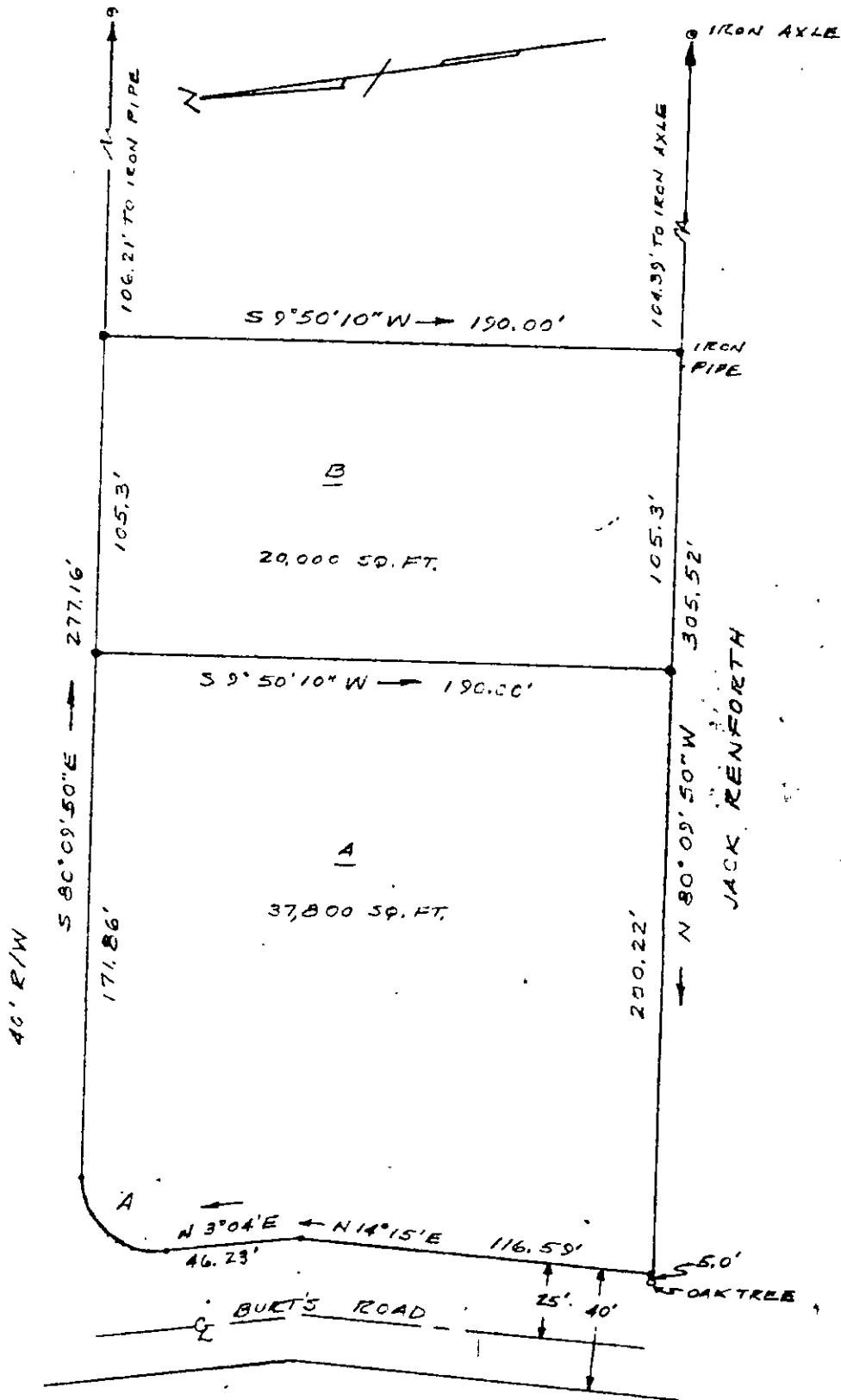


W. E. & JOHN TAYLOR



CURVE A  
 $\Delta = 96^{\circ} 46' 10''$   
 $R = 25.00'$   
 $T = 28.14'$   
 $L = 42.22'$

VIRGINIA: County of York to-wit:  
 In the Clerk's Office of the Circuit Court for the County of York, the 18th day of November, 1960  
 This deed was presented with the certificate and requisite amount of U. S. I. R. Stamps amounting to \$ 1.10 annexed and cancelled, admitted to record at 4:45 o'clock PM  
 Teste: MELVILLE H. BRYANT, Clerk  
 By: Conrad M. Wade Deputy Clerk

PLAT OF PROPERTY OF  
 W. E. AND JOHN TAYLOR  
 GRAFTON DISTRICT  
 YORK COUNTY, VA.  
 SCALE 1" = 50' OCT, 1960  
Walter D. Thomas  
 C.L.S. 519

29-89B ✓