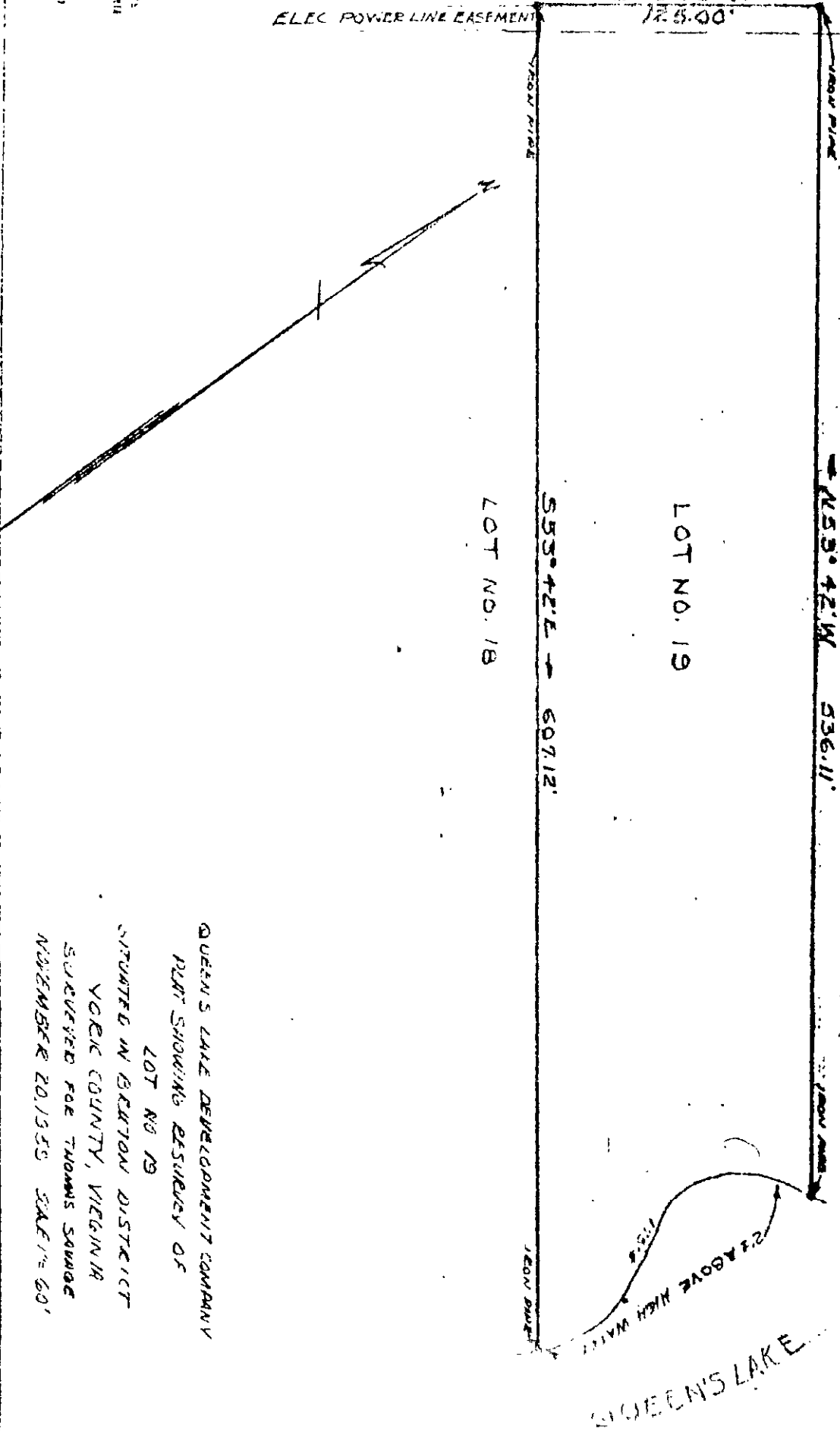


QUEEN'S DRIVE

PLANNED BY: W. W. WATSON
REGISTERED PROFESSIONAL ENGINEER
LAND SURVEYOR
LICENSE NO. 131
EXPIRES 12/31/19
SPECIALTIES: SURVEYING

1556'78" W
125.00'
ELEC POWER LINE EASEMENT



LOT NO. 20

LOT NO. 19

LOT NO. 18

QUEEN'S LAKE

QUEEN'S LAKE DEVELOPMENT COMPANY
PLAT SHOWING RESURVEY OF
LOT NO. 19
SITUATED IN BEAUFORT DISTRICT
YOKE COUNTY, VIRGINIA
SURVEYED FOR THOMAS SAWARD
NOVEMBER 20, 1935 SCALE 1" = 60'

7A 2① 19