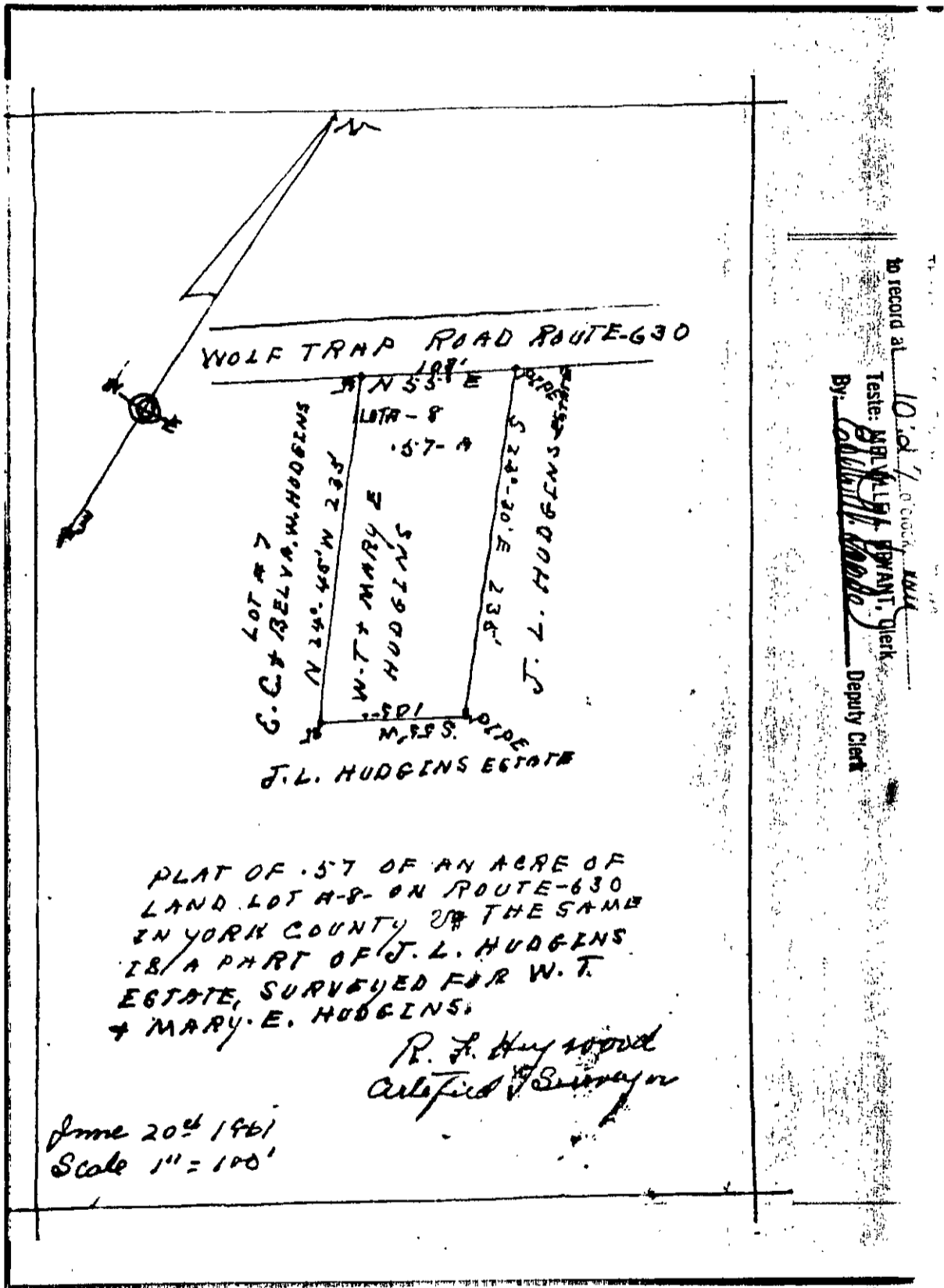


151-51



PLAT OF .57 OF AN ACRE OF  
LAND LOT A-8- ON ROUTE-630  
IN YORK COUNTY OF THE SAME  
IS A PART OF J. L. HUDGINS  
ESTATE, SURVEYED FOR W. T.  
& MARY E. HUDGINS.

*R. F. Haywood*  
Certified Surveyor

June 20<sup>th</sup> 1961  
Scale 1" = 100'

To record at  
10:27  
Tester: *R. F. Haywood* Deputy Clerk  
By: *R. F. Haywood* Deputy Clerk

24-160E