

1851
OLD YORK-HAMPTON HIGHWAY
N 10° E

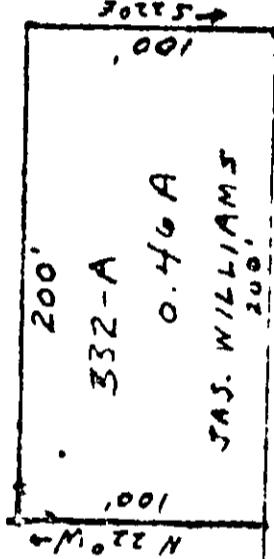
PT. OF BEGINNING

GERALDINE WILLIAMS

← 568° W

544.5

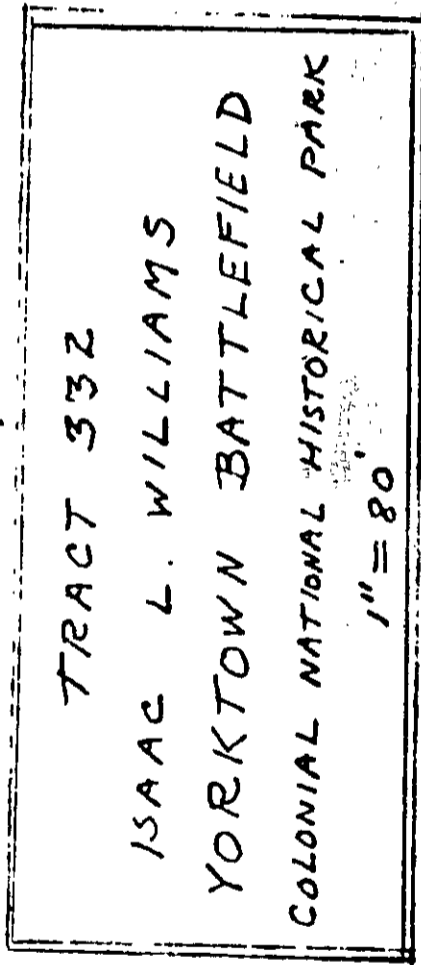
3.54 A.



845.6'

N 68° E →

NORMAN WASHINGTON



SEE ALSO
PLAT @ 151-414
ATTCH'D
40' R/W?

18-30

WINIFRED WILLIAMS
← 568° W
404.67'

244
522° E