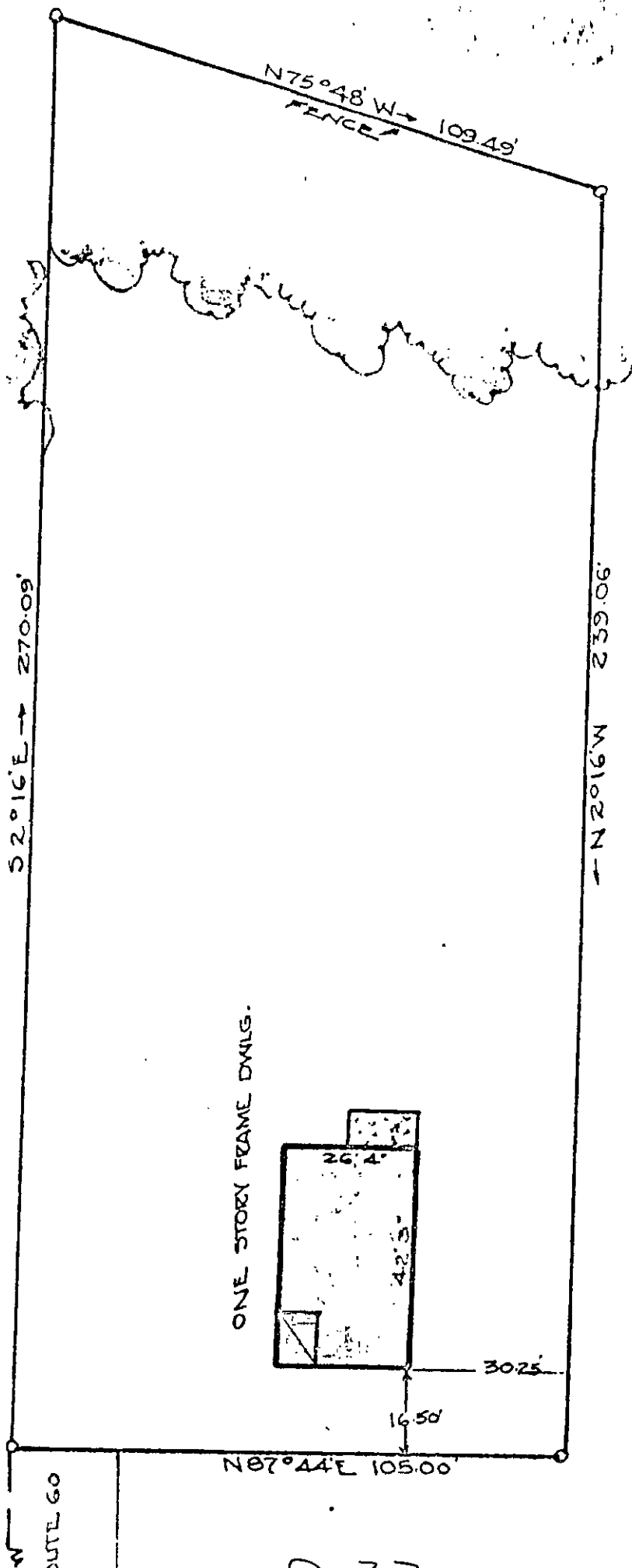


C. C. CASEY

171-701

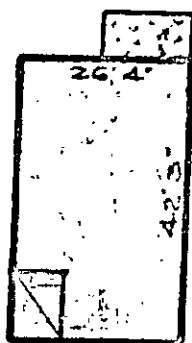
A. S. HINTY



CYTRUS

RECORD MERIDIAN

ONE STORY FRAME DWLG.



30.25

16.50

N07°44' E 105.00'

20 FEET TO ROUTE 60
350'

9-22

SECTION 10, TOWNSHIP 10, NORTH COUNTY VIRGINIA.
THIS SURVEY SHOWS THE LOCATION OF IMPROVEMENTS, PART OF
THE 1/4 SECTION 10, TOWNSHIP 10, NORTH COUNTY VIRGINIA
PROPERTY OF C. C. CASEY.

DECEMBER 11, 1863 WITH C. HODGE

DECEMBER 11, 1863

SCALE 1" = 30'

IRON PIPES MARKERS SHOWING

AS SURVEYED BY
A. S. HINTY
1863