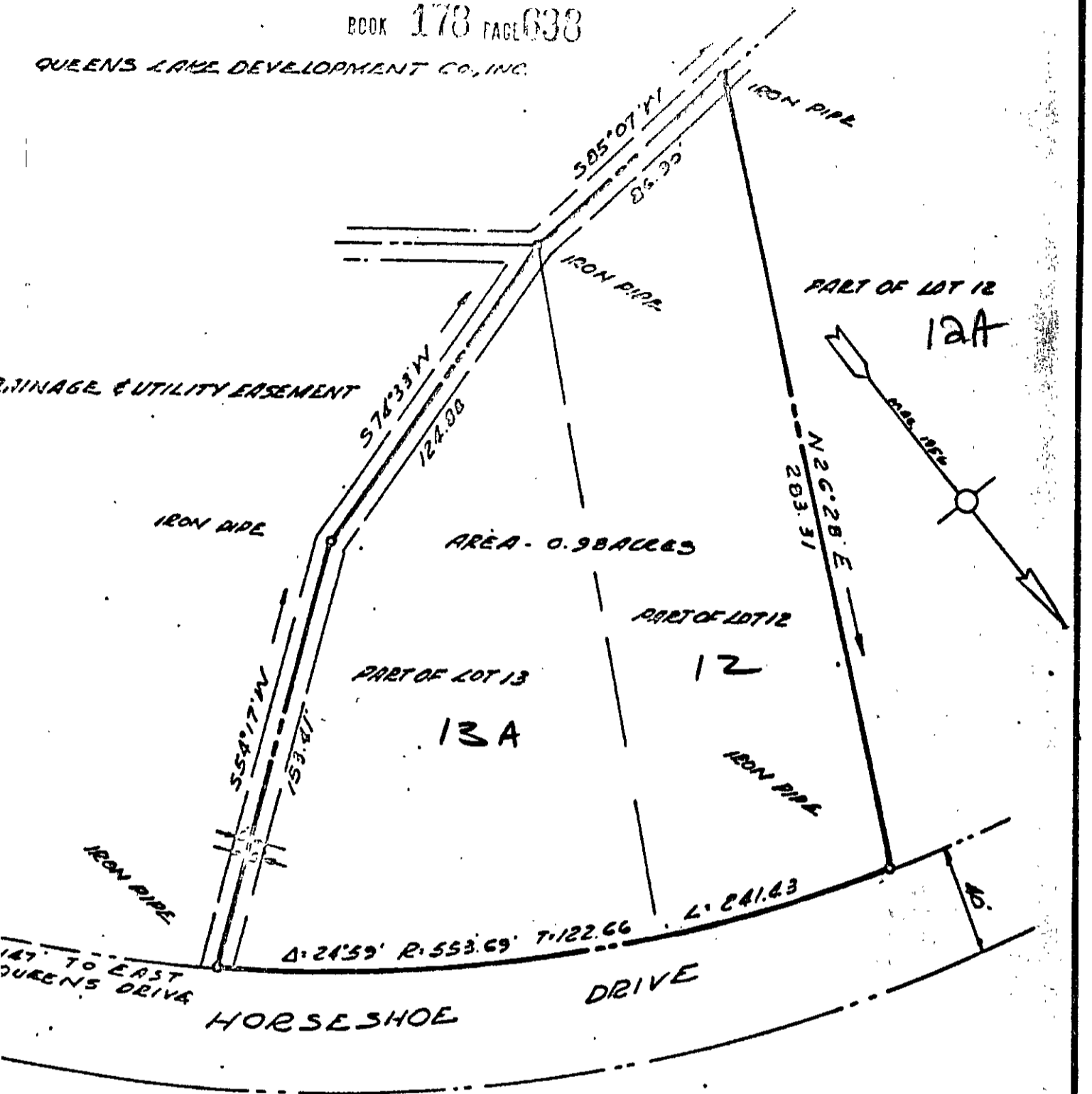


QUEENS LAKE DEVELOPMENT CO., INC.



7A 12 + 13A

PLAT SHOWING REVISION OF
LOTS 12 AND 13 IN
SECTION 7 FRONTING ON
HORSESHOE
QUEENS LAKE DEVELOPMENT
INCORPORATED

NEW YORK
OCT. 14, 1958