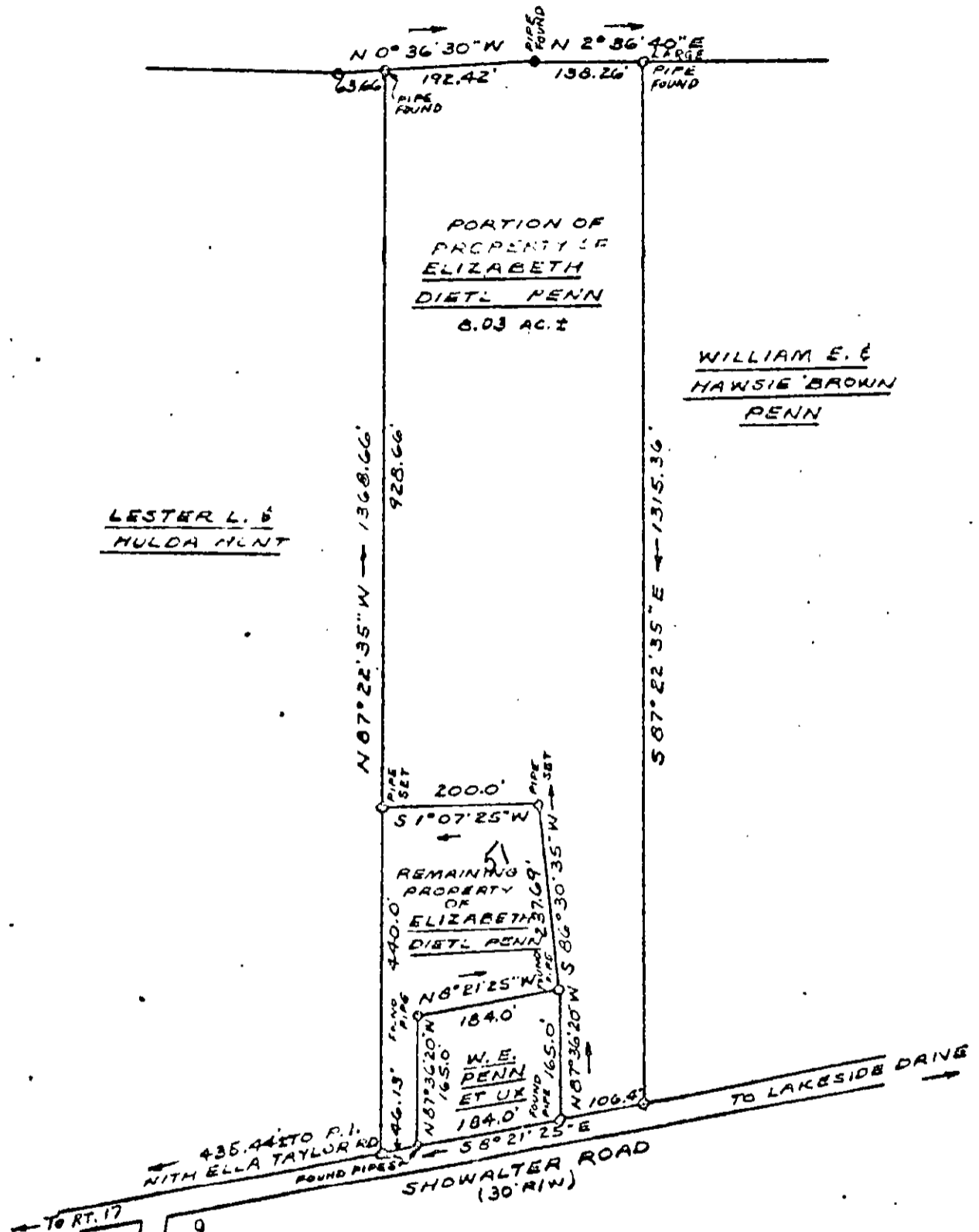


HARWOODS MILL SUBDIVISION
P. B. 6 - PG. 109



REFERENCE: D. B. 52 - PG 194



30-51

PLAT SHOWING PORTION OF PROPERTY OF ELIZABETH DIETL PENN	
BEING LOCATED ON SHOWALTER ROAD, GRAFTON DISTRICT YORK COUNTY, VIRGINIA	
SCALE: 1" = 200'	AUGUST 20, 1964
S. J. GLASS & ASSOCIATES ENGINEERING SERVICES - HAMPTON, VIRGINIA	
P. F. NO. A-P-45	FIELD WORK BY: C.S.