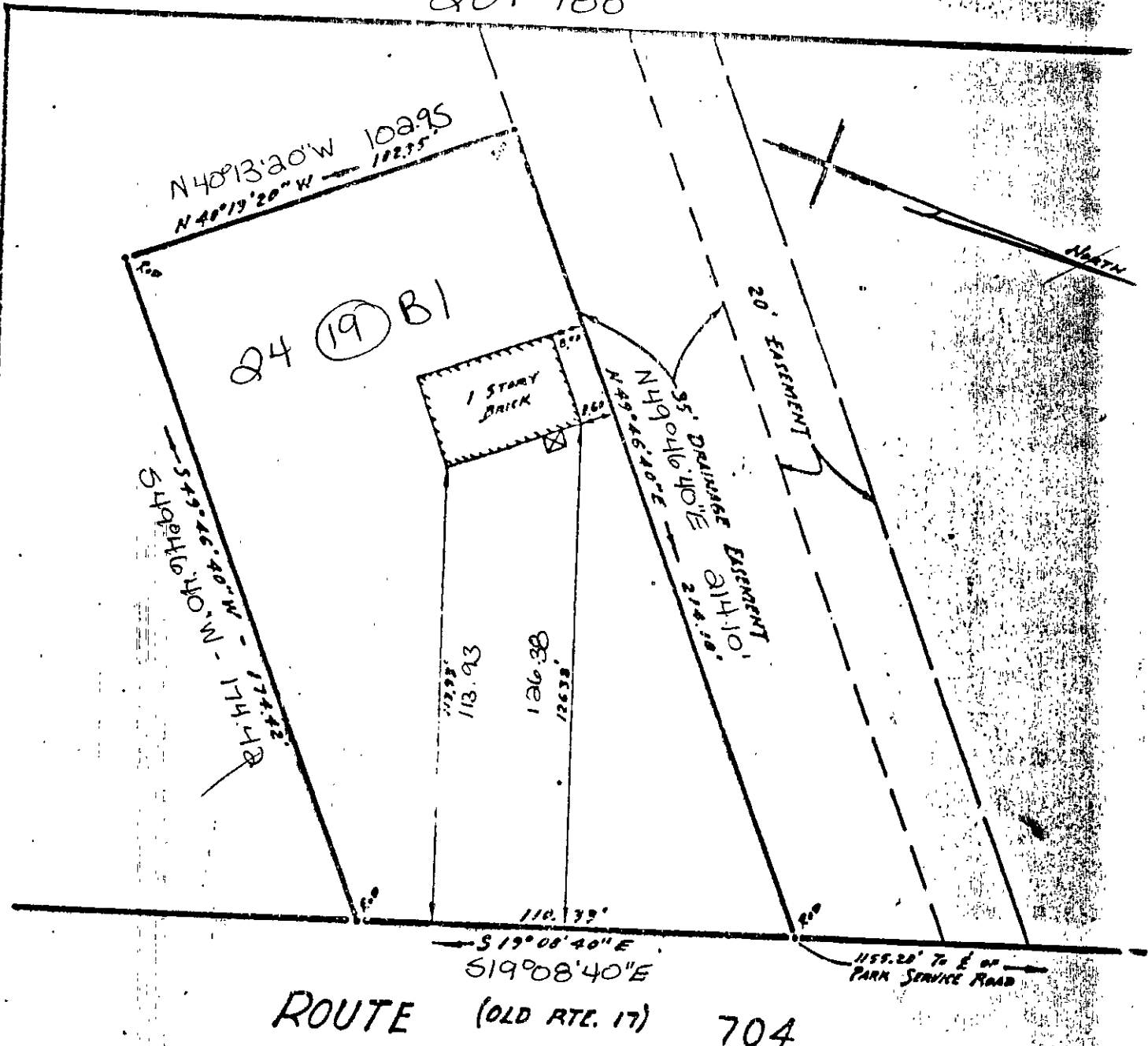


204-788



IMPROVEMENTS ON PARCEL OF LAND ON WEST SIDE ROUTE 704
 GRAFTON DISTRICT

YORK COUNTY, VA.

Scale 1" = 40'
 onlay 16, 1967

J. W. WILLIAMS & ASSOCIATES
 SURVEYORS & SURVEYORS
 RICHMOND, VA.
 SCALE: 1" = 40'
 [Signature]

PREVIOUS JOB No.

24 (19) B1