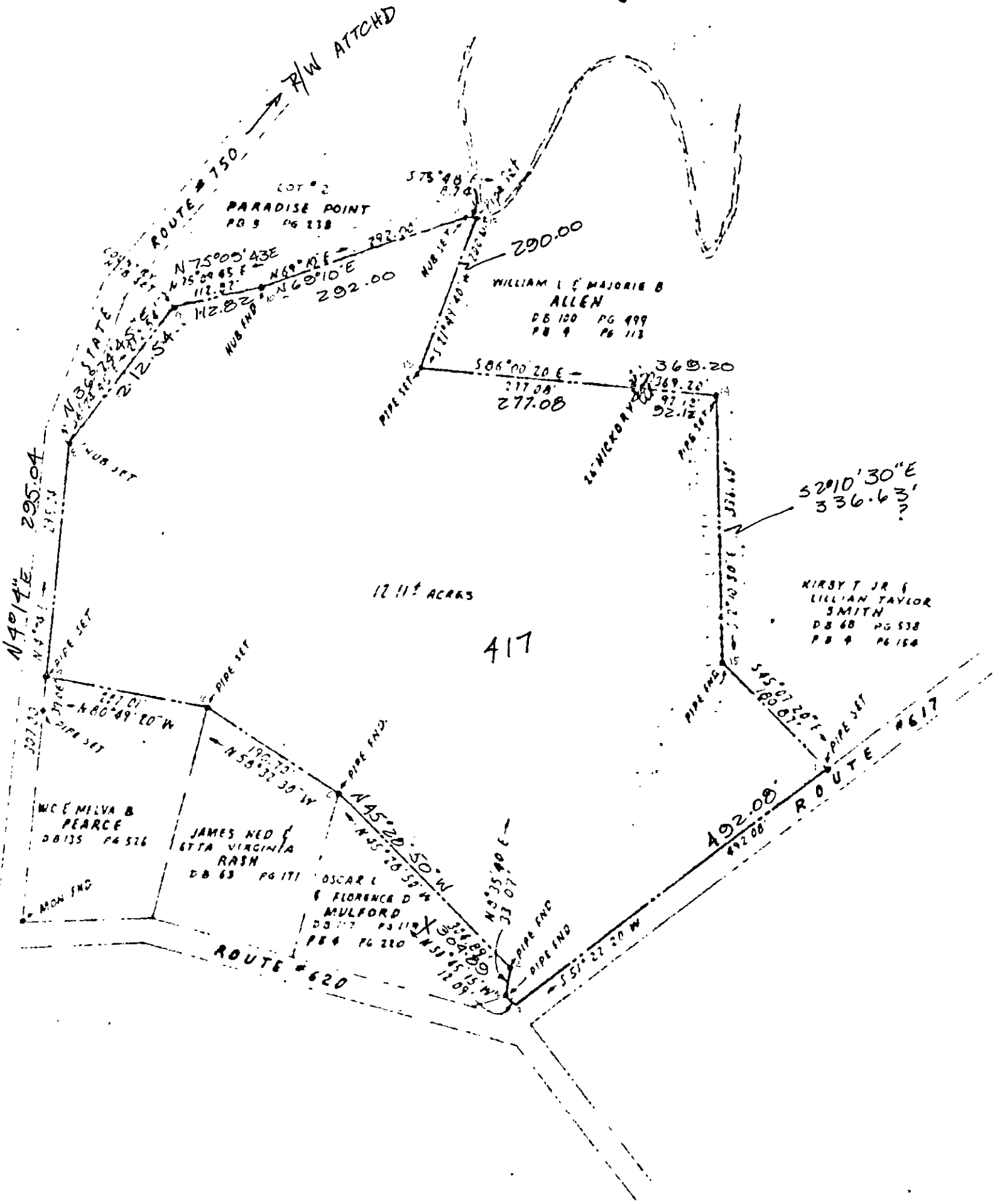


DB 207-755

CHISMA



25-55-125
Now Hidden Harbor
25-417 ✓

PLAT OF PROPERTY BAKER LAND CO. GRAFTON, DISTRICT YORK COUNTY, VA.	
Murray & Dischinger - Newport News & Norfolk	
Scale 1" = 200'	Revis.
Date MAY 23, 1966	