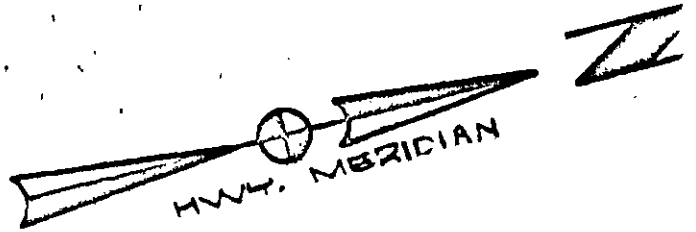
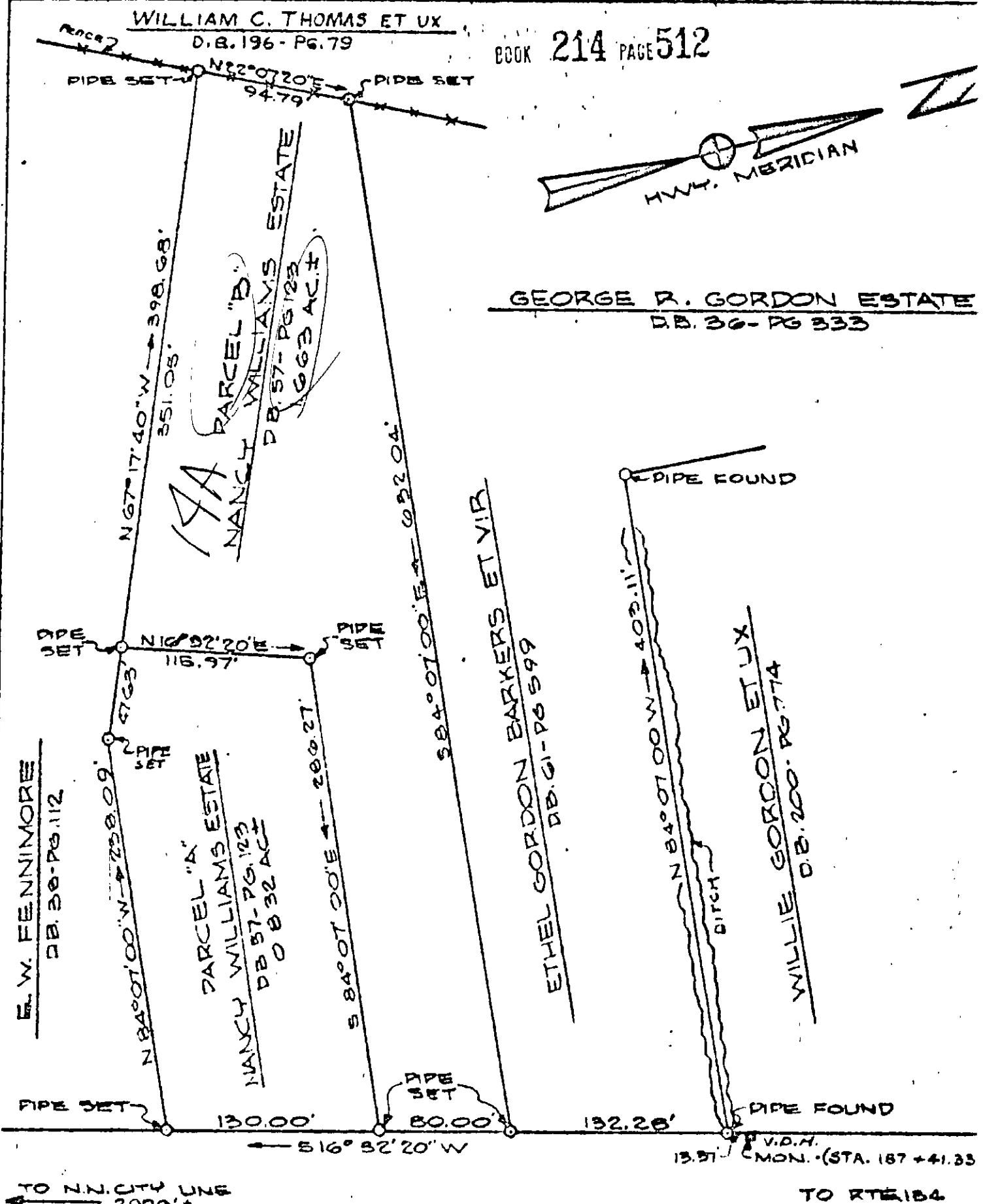


WILLIAM C. THOMAS ET UX
D.B. 196 - Pg. 79

BOOK 214 PAGE 512



GEORGE R. GORDON ESTATE
D.B. 36 - PG 333



E.W. FENNIMORE
D.B. 36 - PG. 112

PARCEL "A"
NANCY WILLIAMS ESTATE
D.B. 57 - PG. 123
0.832 AC.±

14A
PARCEL "B"
NANCY WILLIAMS ESTATE
D.B. 57 - PG. 123
1.663 AC.±

ETHEL GORDON BARKERS ET VIR
D.B. 61 - PG 599

WILLIE GORDON ET UX
D.B. 200 - PG. 774

TO N.N. CITY LINE
2000' ±

TO RTE 184

ROUTE 17
(160' R/W)

REFERENCES:
P.B. 1 - Pgs. 54 & 55
D.B. 72 - Pg. 41

37-14A



PLAT
SHOWING PROPERTY OF
NANCY WILLIAMS ESTATE
BEING PART OF THE
CALLOHILL PRESSON TRACT
SITUATED ON ROUTE 17
BETHEL DISTRICT, YORK COUNTY
VIRGINIA
SCALE: 1" = 30'
JULY 3, 1968