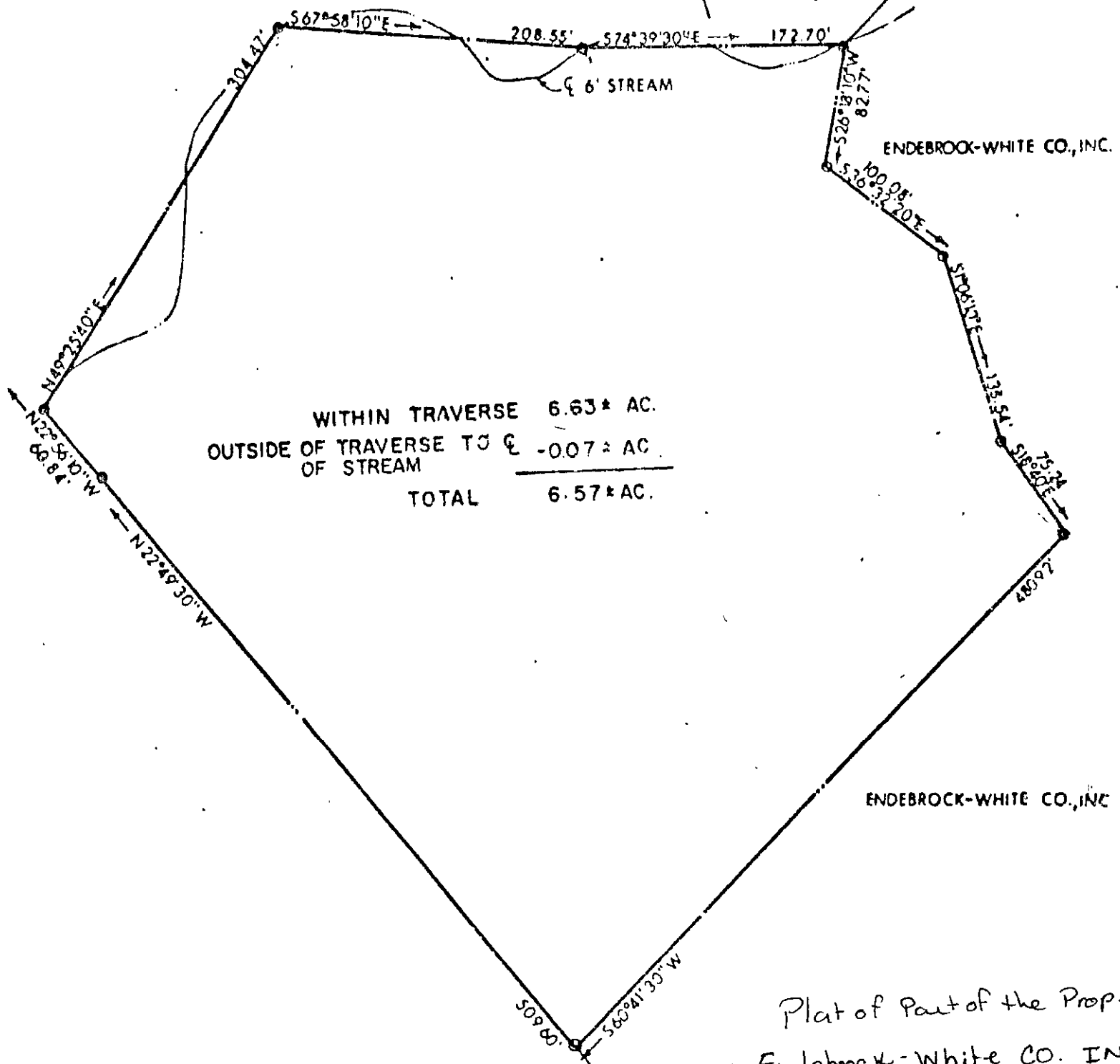


NOW OR FORMERLY  
LESLIE R. O'HARA  
DB 61 PG 353

BOOK 249 PAGE 33  
M W 4  
158-34  
P.B. 130

1 SECT ON RICHMOND PLAT  
L ECTD ON MARCH 29, 1962  
DATED OCTOBER 26 PG 186



WITHIN TRAVERSE	6.63* AC.
OUTSIDE OF TRAVERSE TO & OF STREAM	-0.07* AC.
<b>TOTAL</b>	<b>6.57* AC.</b>

NOW OR FORMERLY  
HARRIS GROVE INVESTMENT CORP.  
DB 158 PG 34

Plat of Part of the Prop. of  
Endebrock-White CO. INC.  
Grafton, District  
York Co. VA  
Scale 1 = 100'  
Sept 19, 1972

—●— PIPE FOUND  
—○— PIPE SET

24-(21)-1

PLAT OF PART OF THE PROPERTY OF  
**ENDEBROCK-WHITE CO. INC**  
GRAFTON, DISTRICT  
YORK COUNTY, VIRGINIA  
George A. Pierhinger — Engineers  
1115 S. B. Hanxton, Virginia  
Residence

*George A. Pierhinger*