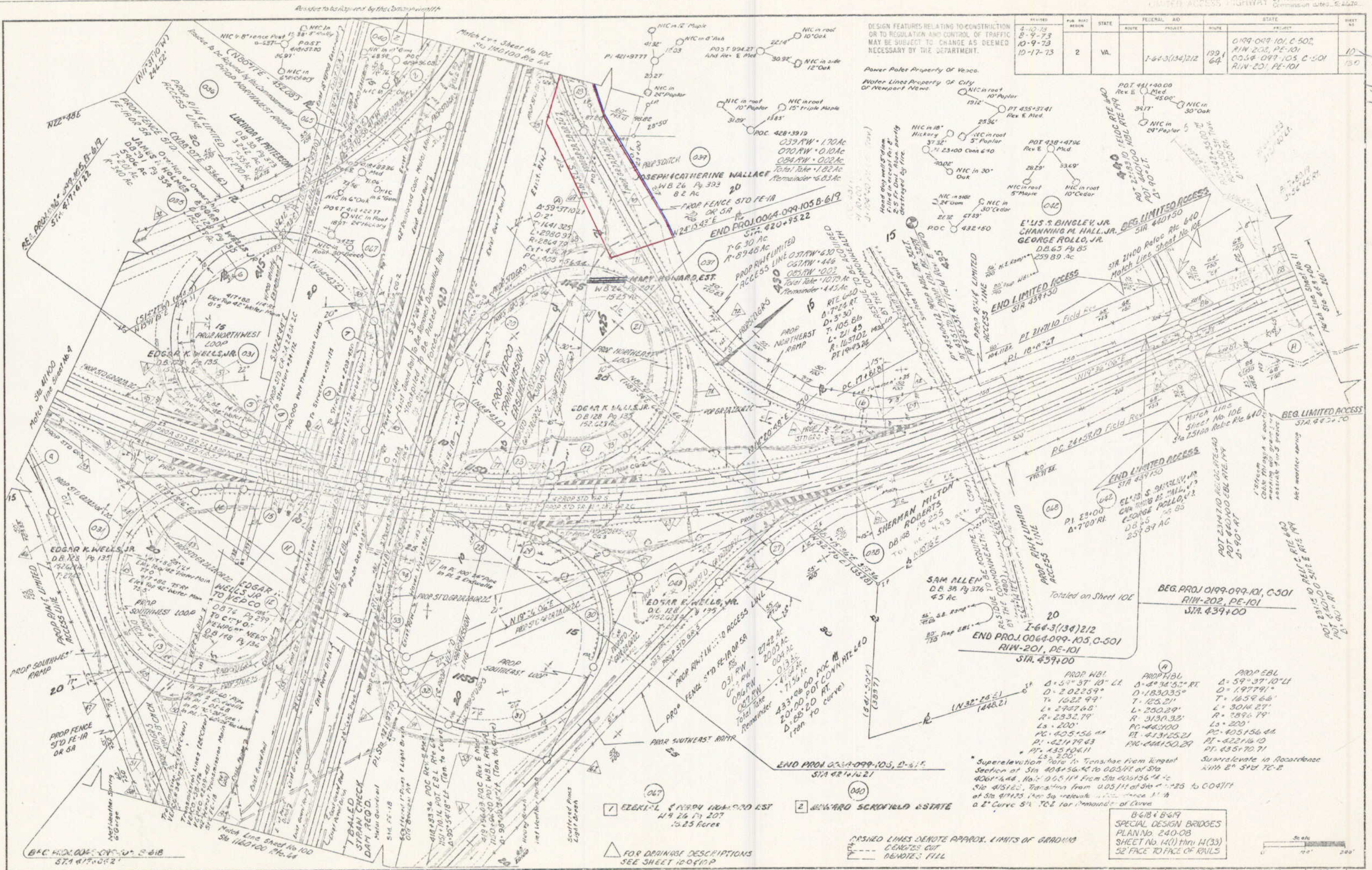


SUFFOLK DISTRICT DESIGN UNIT



DESIGN FEATURES RELATING TO CONSTRUCTION OR TO REGULATION AND CONTROL OF TRAFFIC MAY BE SUBJECT TO CHANGE AS DEEMED NECESSARY BY THE DEPARTMENT.

REVISED	FOR ROAD	STATE	FEDERAL AID	PROJECT	ROUTE	STATE	PROJECT	SHEET NO.
8-10-73								
8-9-73								
10-9-73								
10-17-73								
	2	VA.		1-64-3(134)212	199	64	0199-099-101, C-501, R/W-202, PE-101, C-501, R/W-201, PE-101	10

Power Pole Property Of Vecco.
Water Lines Property Of City Of Newport News

Hand dug well
Filled in 1964
2.5' Fr. Dm. Also partly destroyed by fire

PROJ. 0199-099-101, C-501
R/W-202, PE-101
STA. 439+00

PROJ. 0199-099-101, C-501
R/W-201, PE-101
STA. 439+00

PROJ. 0199-099-101, C-501
R/W-202, PE-101
STA. 439+00

PROJ. 0199-099-101, C-501
R/W-201, PE-101
STA. 439+00

PLAN	SURVEYED	G.W. SHAWLITZ	5-70
	PLOTTED	J.V. JOYNER	7-70
	TRACED	J.V. JOYNER	7-70
	RECALC'D	J.V. JOYNER	7-70
	LINED	J.V. JOYNER	8-70

B-618 & B-619
SPECIAL DESIGN BRIDGES
PLAN No. 240-08
SHEET No. 14(1) thru 14(33)
52' FACE TO FACE OF RAILS

PLAN NO.	PROJECT	FILL NO.	SHEET
A		6	1