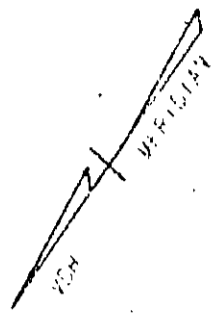
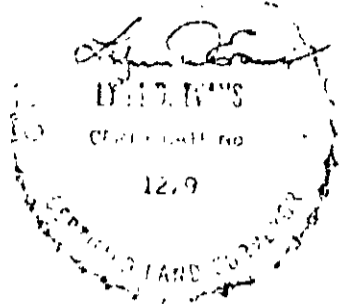


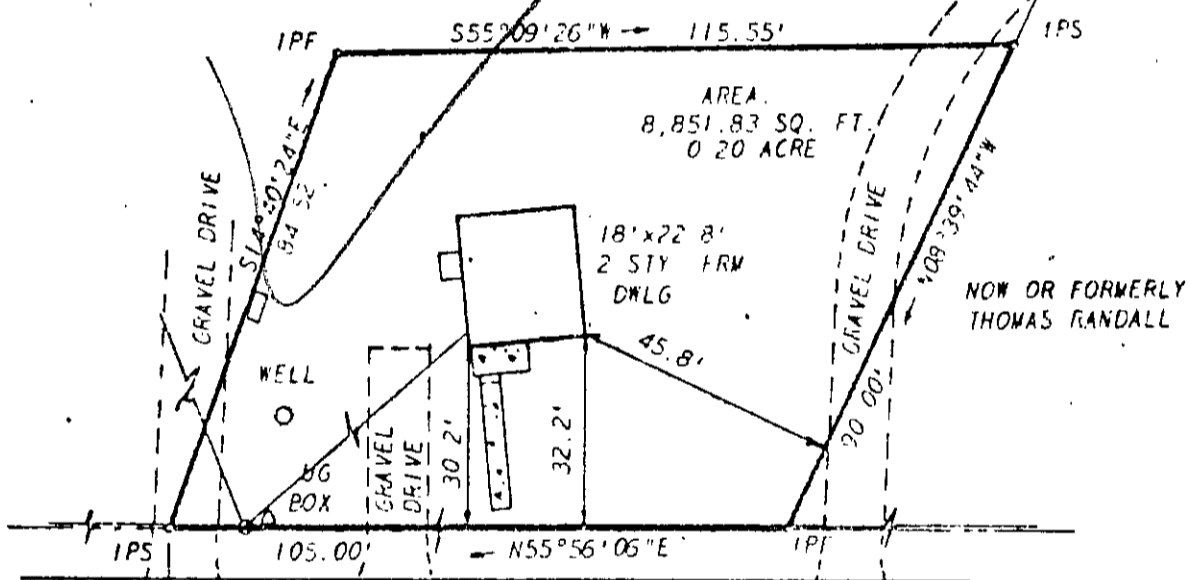
D.B 306-180

BOOK 306 PAGE 130



NOW OR FORMERLY SCHOFIELD ESTATE

AXLE END



NOW OR FORMERLY THOMAS RANDALL

110' TO  
E SERVICE RD.  
VEPCO  
KH 22  
459-D7

PENNIMAN ROAD

architects and engineers inc	architects, engineers, surveyors, and planners	Williamsburg, Virginia
PROJECT NO.	PROPERTY USE	DATE
A SURVEY OF 0.20 ACRE, AN "IMPROVEMENT" STARTING IN THE NAME OF NANCY LEE HUNTER (DAUGHTER OF LESTER HUNTER), DEER COUNTY, VIRGINIA		
DATE	BY	SCALE

Tax Map 11-34