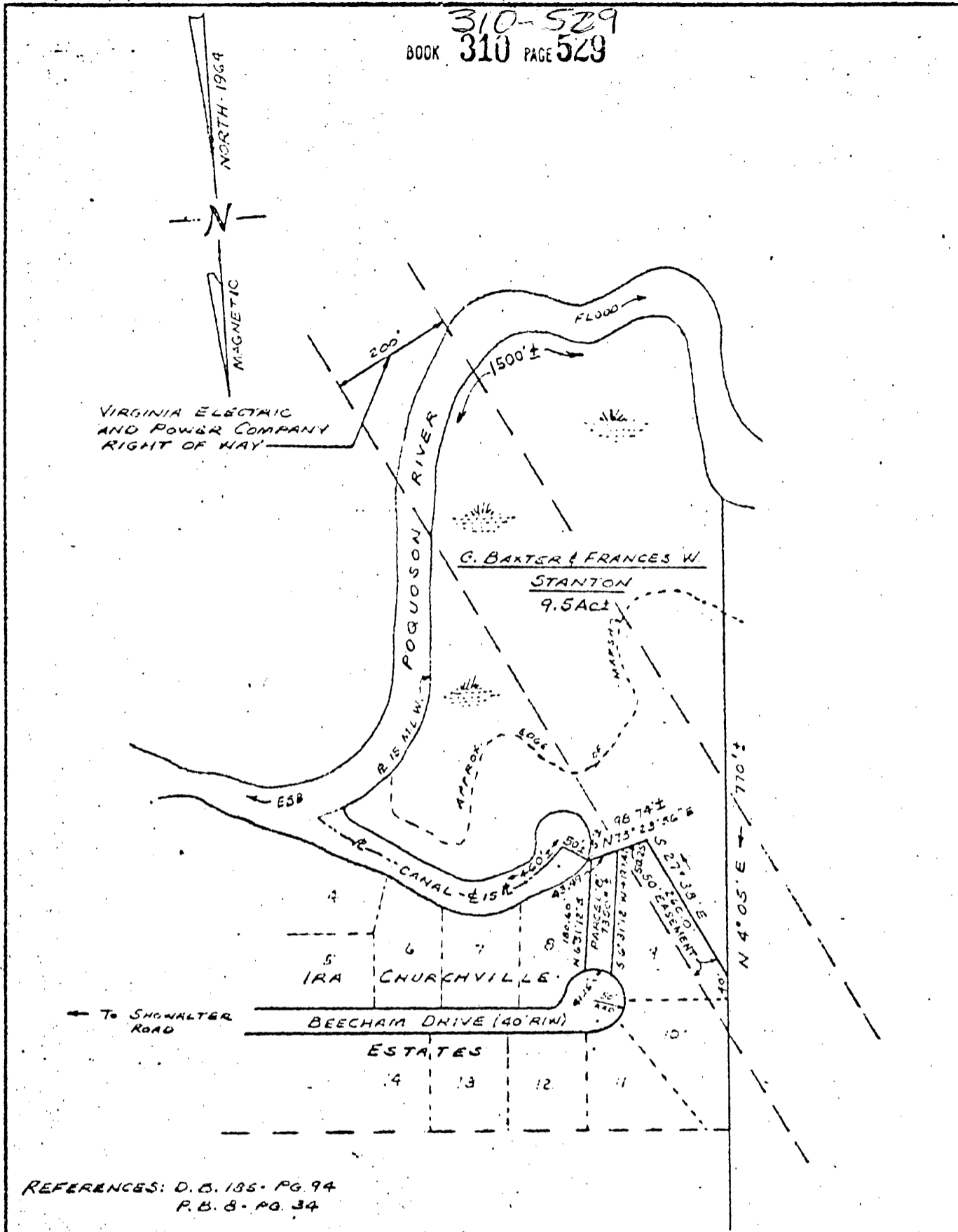


PLAT FOR 2B

BOOK 310-529  
PAGE 529



REFERENCES: D. B. 185 - PG. 94  
P. B. 8 - PG. 34



PLAT  
SHOWING PROPERTY OF  
G. BAXTER & FRANCES W. STANTON

BEING LOCATED NEAR BEECHAM DRIVE  
GRAFTON DISTRICT  
YORK COUNTY, VIRGINIA

SCALE: 1" = 200'      FEBRUARY 10, 1978

S. J. GLASS & ASSOCIATES  
ENGINEERING SERVICES - HAMPTON, VIRGINIA

P. F. NO. A-S-321      FIELD WORK BY: S.J.G.

78-6

30 I (8) 2B ✓